

DARLENE MEALY

NY City Council
District 41

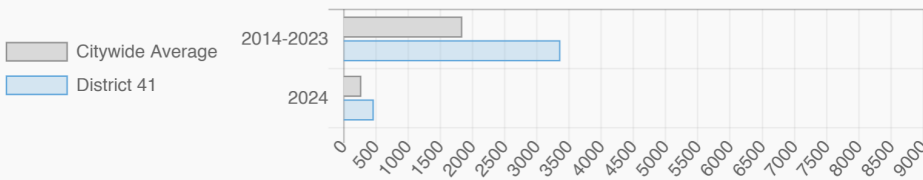
@CMDarleneMealy

Bedford-Stuyvesant (East), Crown Heights (North), Lincoln Terrace Park, Crown Heights (South), Prospect Lefferts Gardens-Wingate, Ocean Hill, Brownsville, East Flatbush-Rugby, East Flatbush-Remsen Village

Every Neighborhood Must Do Its Part To Solve New York's Affordable Housing Crisis

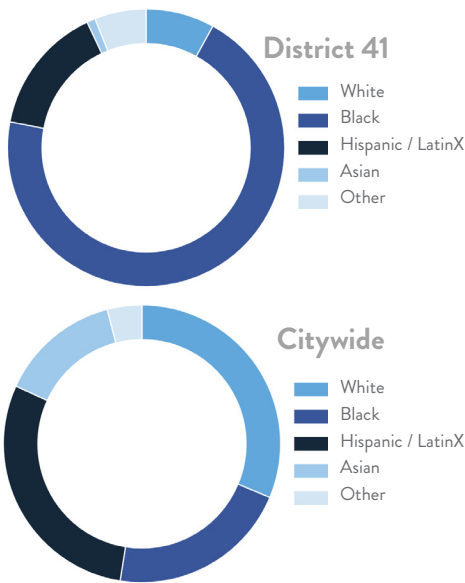
In New York City 500,000 households pay more than half their income in rent and 140,000 people were homeless while statewide New York has a shortage of 711,000 apartments affordable to very low-income households according to the most recent estimates.

Affordable Housing Construction in District: 2014-2024

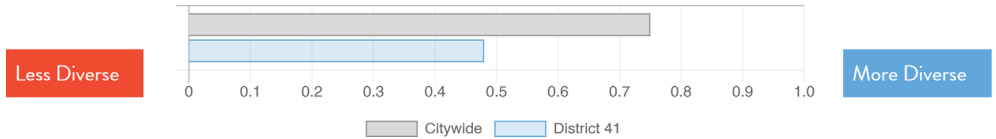


Ranked 12
IN AFFORDABLE HOUSING

Who lives in District 41?



Racial Diversity Index



Demographics	District 41	Citywide
Seniors – 65 And Older	13.7%	15.5%
Families With Children	23.3%	23.7%
Median Household Income	\$50,923	\$63,998
People Living Below Poverty Level	25.9%	17.2%

What are the housing needs in District 41?

Housing Need	District 41	Citywide Avg Per District
Rental Vacancy Rate	2.2%	3.6%
Rent Burdened Households	55.1%	49.6%
Severely Rent Burdened Households	30.3%	26.8%
Expiring Affordable Units 2025-2029	1,478	1,624
Percent Overcrowded	4.6%	5.3%
Code Violations Per 100 Units	45.1	26.4
NYCHA Capital Needs	\$4,307,155,323	\$1,467,444,775

What is the housing stock in District 41?

Housing Stock	District 41	Citywide Avg Per District
NYCHA Units	8,806	3,033
Section 8 Units	4,889	3,149
Density: PPL Per Acre	97.6	44.7
Percent Homeowners	18.2%	32.9%
Percent Renters	81.8%	67.1%
Rent Regulated Units	12,700	18,837
Units In 1-4 Family Homes	45.4%	38.0%
Units In 5-19 Unit Buildings	17.5%	13.1%
Units In 20+ Unit Buildings	37.0%	48.7%

Housing Production	District 41	Citywide Average
Housing Units In 2023	68,503	72,971
New Housing Units In 2024	829	740
Housing Units In 2024	69,332	73,711
Percent Change In 2024	1.21%	1.00%

DARLENE MEALY

NY City Council

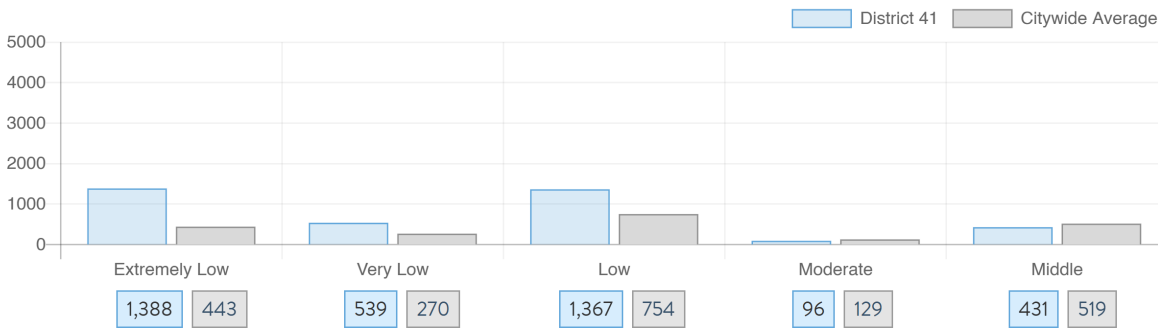
District 41 @CMDarleneMealy

Bedford-Stuyvesant (East), Crown Heights (North), Lincoln Terrace Park, Crown Heights (South), Prospect Lefferts Gardens-Wingate, Ocean Hill, Brownsville, East Flatbush-Rugby, East Flatbush-Remsen Village

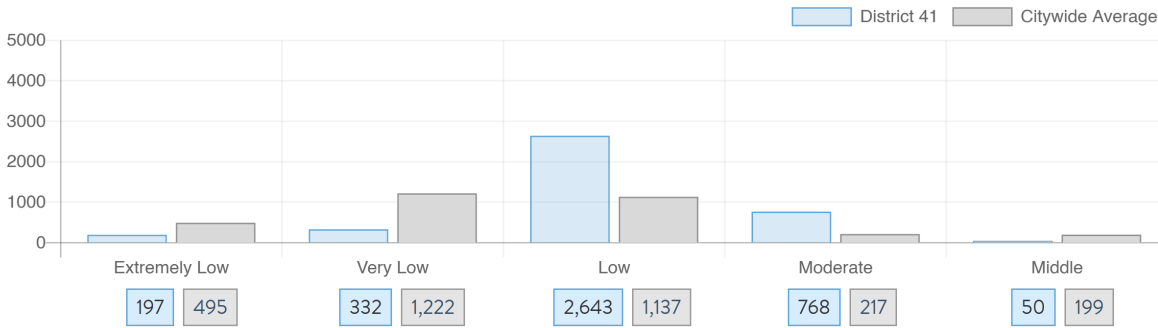


What affordable housing is being produced?

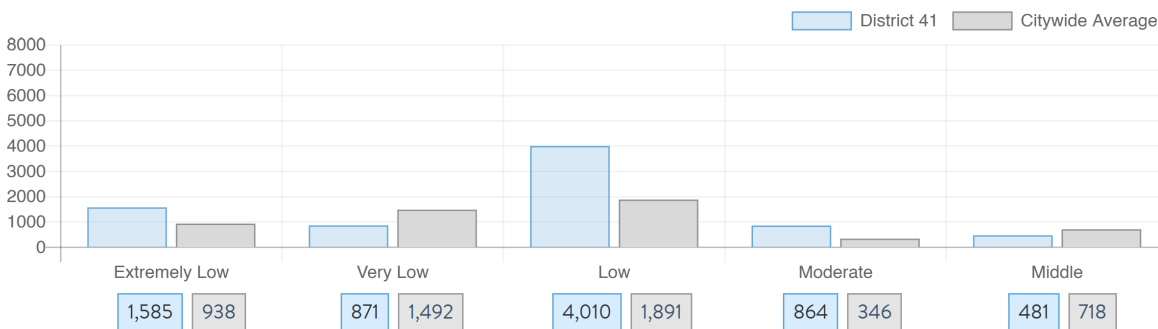
Affordable housing construction in district compared to Citywide average: 2014 - 2024



Affordable housing preserved in district: 2014 - 2024



Total affordable housing production in district: 2014 - 2024



Source: github.com/thenyhccitycouncil/districthousingtracker