

RITA JOSEPH

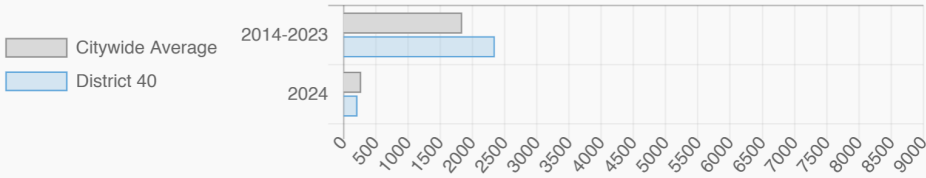
NY City Council
District 40 @RitaJosephNYC

Windsor Terrace-South Slope, Crown Heights (South), Prospect Lefferts Gardens-Wingate, Borough Park, Kensington, Mapleton-Midwood (West), Flatbush, Flatbush (West)-Ditmas Park-Parkville, East Flatbush-Erasmus, East Flatbush-Rugby, Prospect Park

Every Neighborhood Must Do Its Part To Solve New York’s Affordable Housing Crisis

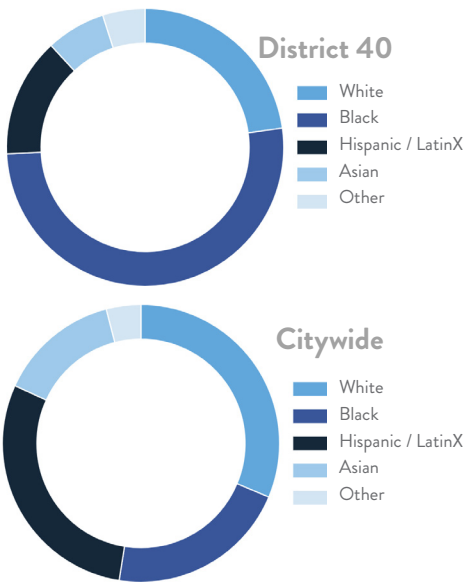
In New York City 500,000 households pay more than half their income in rent and 140,000 people were homeless while statewide New York has a shortage of 711,000 apartments affordable to very low-income households according to the most recent estimates.

Affordable Housing Construction in District: 2014-2024

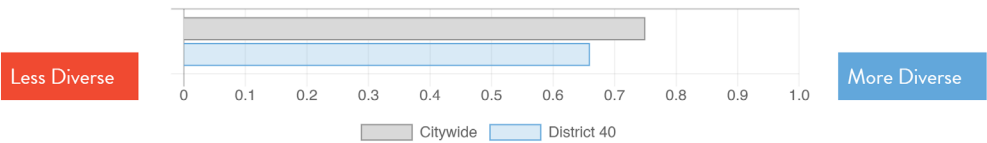


Ranked 18
IN AFFORDABLE
HOUSING

Who lives in District 40?



Racial Diversity Index



Demographics	District 40	Citywide
Seniors – 65 And Older	14.8%	15.5%
Families With Children	21.0%	23.7%
Median Household Income	\$75,070	\$63,998
People Living Below Poverty Level	15.3%	17.2%

What are the housing needs in District 40?

Housing Need	District 40	Citywide Avg Per District
Rental Vacancy Rate	3.6%	3.6%
Rent Burdened Households	48.3%	49.6%
Severely Rent Burdened Households	26.0%	26.8%
Expiring Affordable Units 2025-2029	1,091	1,624
Percent Overcrowded	5.2%	5.3%
Code Violations Per 100 Units	60.9	26.4
NYCHA Capital Needs	\$0	\$1,467,444,775

What is the housing stock in District 40?

Housing Stock	District 40	Citywide Avg Per District
NYCHA Units	–	3,033
Section 8 Units	2,623	3,149
Density: PPL Per Acre	104.6	44.7
Percent Homeowners	20.4%	32.9%
Percent Renters	79.6%	67.1%
Rent Regulated Units	33,700	18,837
Units In 1-4 Family Homes	25.4%	38.0%
Units In 5-19 Unit Buildings	11.3%	13.1%
Units In 20+ Unit Buildings	63.2%	48.7%

Housing Production	District 40	Citywide Average
Housing Units In 2023	72,290	72,971
New Housing Units In 2024	1,036	740
Housing Units In 2024	73,326	73,711
Percent Change In 2024	1.43%	1.00%

RITA JOSEPH

NY City Council

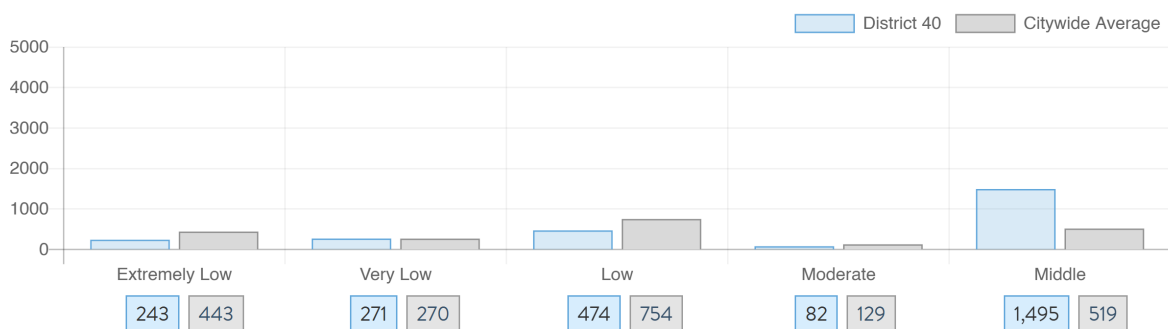
District 40 @RitaJosephNYC

Windsor Terrace-South Slope, Crown Heights (South), Prospect Lefferts Gardens-Wingate, Borough Park, Kensington, Mapleton-Midwood (West), Flatbush, Flatbush (West)-Ditmas Park-Parkville, East Flatbush-Erasmus, East Flatbush-Rugby, Prospect Park

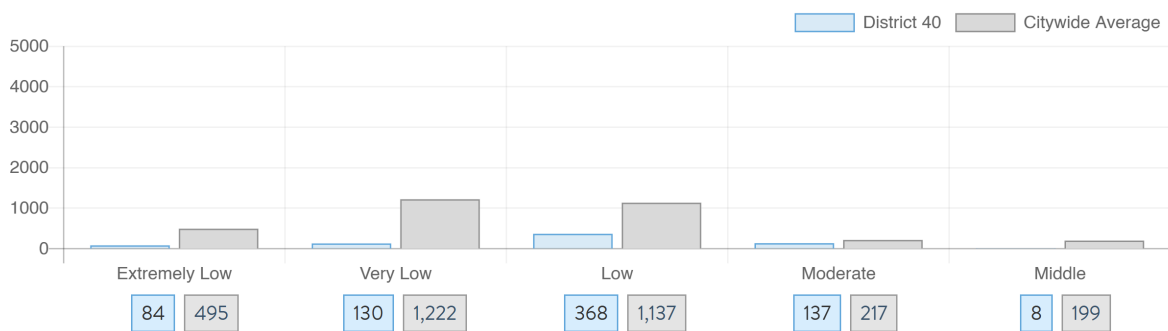
NYC
HOUSING TRACKER

What affordable housing is being produced?

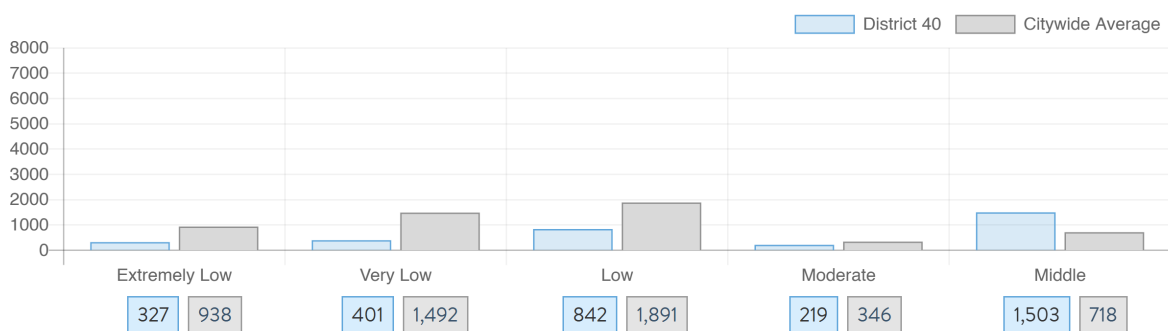
Affordable housing construction in district compared to Citywide average: 2014 - 2024



Affordable housing preserved in district: 2014 - 2024



Total affordable housing production in district: 2014 - 2024



Source: github.com/thenyhccitycouncil/districthousingtracker