

SANDY NURSE

NY City Council
District 37

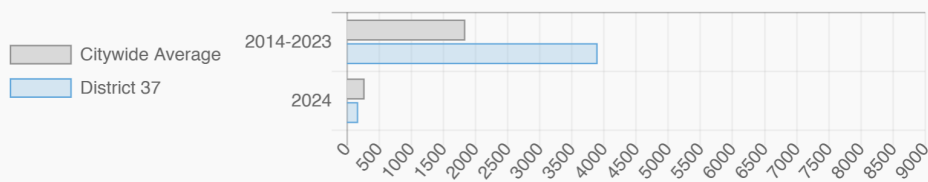
@CMSandyNurse

Bushwick (West), Bushwick (East), The Evergreens Cemetery, Cypress Hills, East New York (North), East New York-City Line, Highland Park-Cypress Hills Cemeteries (South), Ocean Hill, Brownsville

Every Neighborhood Must Do Its Part To Solve New York's Affordable Housing Crisis

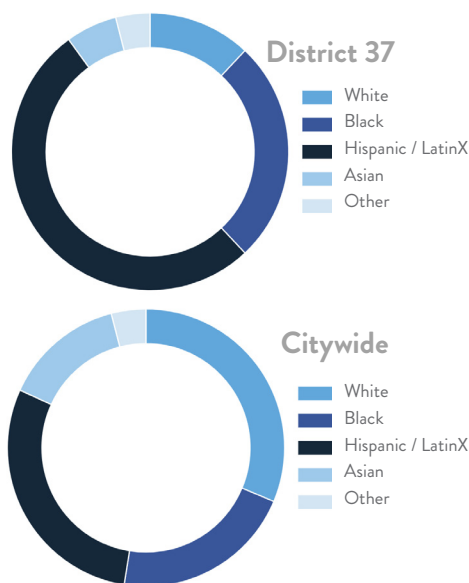
In New York City 500,000 households pay more than half their income in rent and 140,000 people were homeless while statewide New York has a shortage of 711,000 apartments affordable to very low-income households according to the most recent estimates.

Affordable Housing Construction in District: 2014-2024

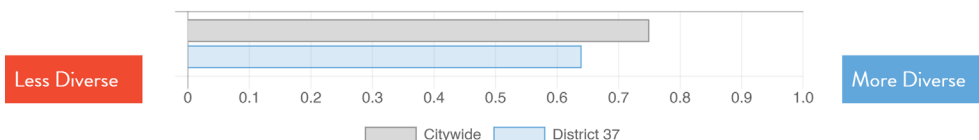


Ranked 10
IN AFFORDABLE
HOUSING

Who lives in District 37?



Racial Diversity Index



Demographics

Demographics	District 37	Citywide
Seniors – 65 And Older	11.0%	15.5%
Families With Children	23.8%	23.7%
Median Household Income	\$63,454	\$63,998
People Living Below Poverty Level	23.6%	17.2%

What is the housing stock in District 37?

Housing Stock	District 37	Citywide Avg Per District
NYCHA Units	678	3,033
Section 8 Units	4,110	3,149
Density: PPL Per Acre	69.0	44.7
Percent Homeowners	23.3%	32.9%
Percent Renters	76.7%	67.1%
Rent Regulated Units	9,900	18,837
Units In 1-4 Family Homes	60.4%	38.0%
Units In 5-19 Unit Buildings	26.1%	13.1%
Units In 20+ Unit Buildings	13.5%	48.7%

Housing Production	District 37	Citywide Average
Housing Units In 2023	62,465	72,971
New Housing Units In 2024	1,979	740
Housing Units In 2024	64,444	73,711
Percent Change In 2024	3.17%	1.00%

What are the housing needs in District 37?

Housing Need	District 37	Citywide Avg Per District
Rental Vacancy Rate	3.2%	3.6%
Rent Burdened Households	54.7%	49.6%
Severely Rent Burdened Households	31.0%	26.8%
Expiring Affordable Units 2025-2029	520	1,624
Percent Overcrowded	7.5%	5.3%
Code Violations Per 100 Units	31.0	26.4
NYCHA Capital Needs	\$357,189,343	\$1,467,444,775

SANDY NURSE

NY City Council

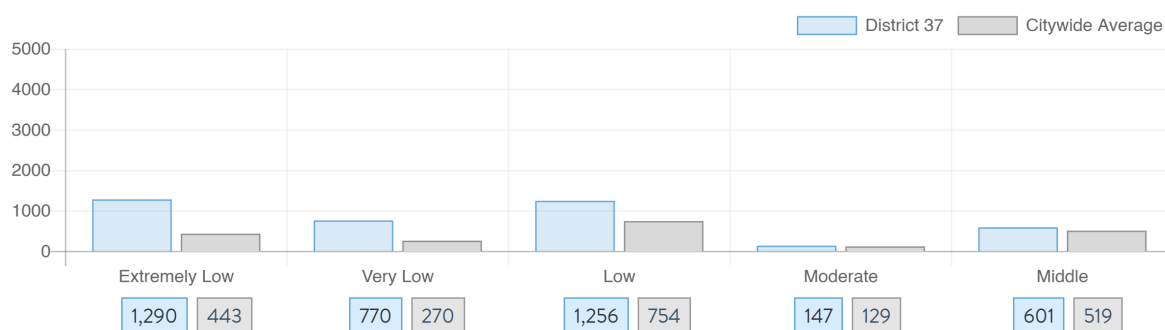
District 37 @CMSandyNurse

Bushwick (West), Bushwick (East), The Evergreens Cemetery, Cypress Hills, East New York (North), East New York-City Line, Highland Park-Cypress Hills Cemeteries (South), Ocean Hill, Brownsville

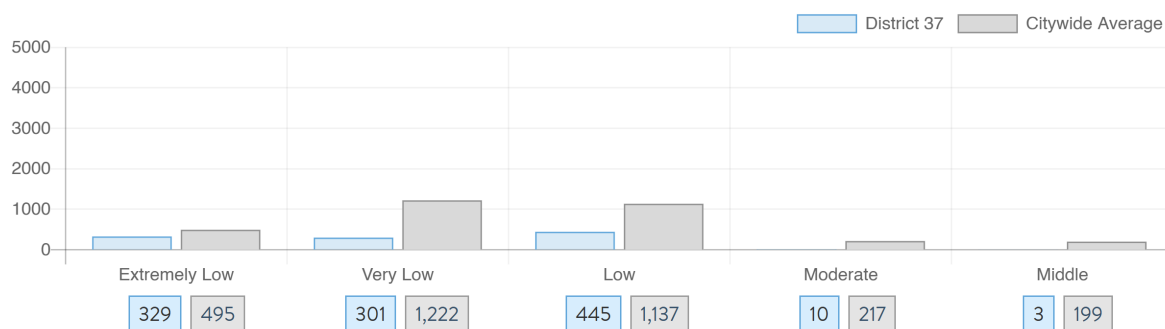
NYC
HOUSING TRACKER

What affordable housing is being produced?

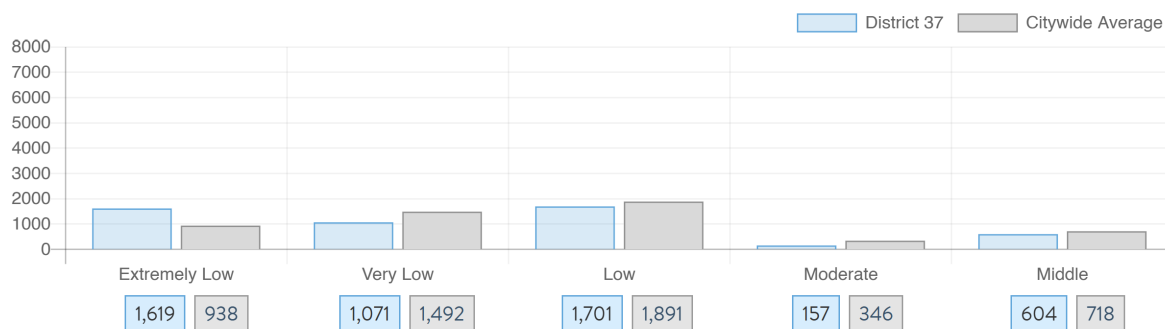
Affordable housing construction in district compared to Citywide average: 2014 - 2024



Affordable housing preserved in district: 2014 - 2024



Total affordable housing production in district: 2014 - 2024



Source: github.com/thenyhccitycouncil/districthousingtracker