

SANDRA UNG

NY City Council
District 20

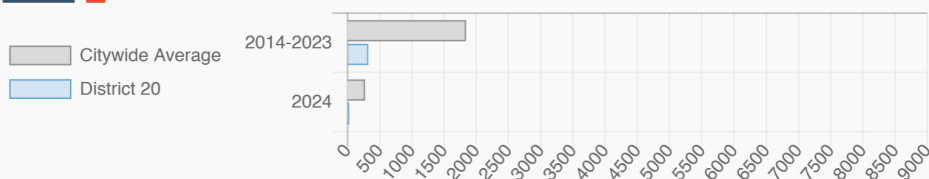
@SandraForNY1

College Point, Whitestone-Beechurst, Bay Terrace-Clearview, Murray Hill-Broadway Flushing, East Flushing, Flushing-Willets Point, Fort Totten, Auburndale, Bayside, Douglaston-Little Neck, Alley Pond Park

Every Neighborhood Must Do Its Part To Solve New York's Affordable Housing Crisis

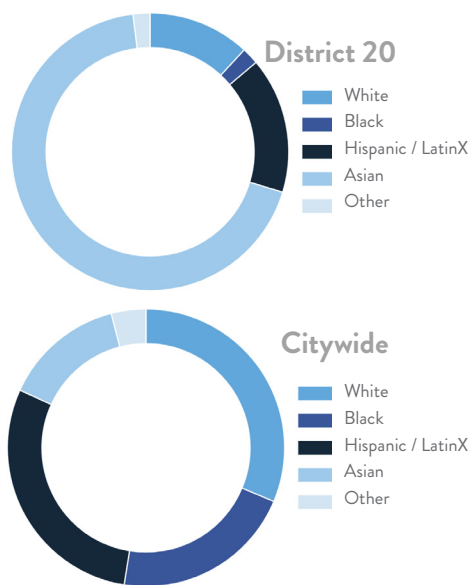
In New York City 500,000 households pay more than half their income in rent and 140,000 people were homeless while statewide New York has a shortage of 711,000 apartments affordable to very low-income households according to the most recent estimates.

Affordable Housing Construction in District: 2014-2024

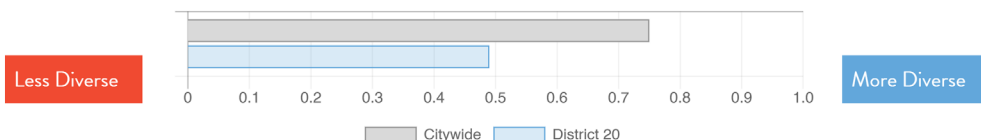


Ranked 39
IN AFFORDABLE
HOUSING

Who lives in District 20?



Racial Diversity Index



Demographics

Demographics	District 20	Citywide
Seniors – 65 And Older	21.8%	15.5%
Families With Children	20.3%	23.7%
Median Household Income	\$57,446	\$63,998
People Living Below Poverty Level	18.1%	17.2%

What is the housing stock in District 20?

Housing Stock	District 20	Citywide Avg Per District
NYCHA Units	906	3,033
Section 8 Units	394	3,149
Density: PPL Per Acre	44.7	44.7
Percent Homeowners	35.1%	32.9%
Percent Renters	64.9%	67.1%
Rent Regulated Units	21,300	18,837
Units In 1-4 Family Homes	39.8%	38.0%
Units In 5-19 Unit Buildings	6.8%	13.1%
Units In 20+ Unit Buildings	53.2%	48.7%

What are the housing needs in District 20?

Housing Need	District 20	Citywide Avg Per District
Rental Vacancy Rate	3.4%	3.6%
Rent Burdened Households	54.6%	49.6%
Severely Rent Burdened Households	32.4%	26.8%
Expiring Affordable Units 2025-2029	2,057	1,624
Percent Overcrowded	6.4%	5.3%
Code Violations Per 100 Units	13.9	26.4
NYCHA Capital Needs	\$448,519,942	\$1,467,444,775

Housing Production	District 20	Citywide Average
Housing Units In 2023	66,306	72,971
New Housing Units In 2024	779	740
Housing Units In 2024	67,085	73,711
Percent Change In 2024	1.17%	1.00%

SANDRA UNG

NY City Council

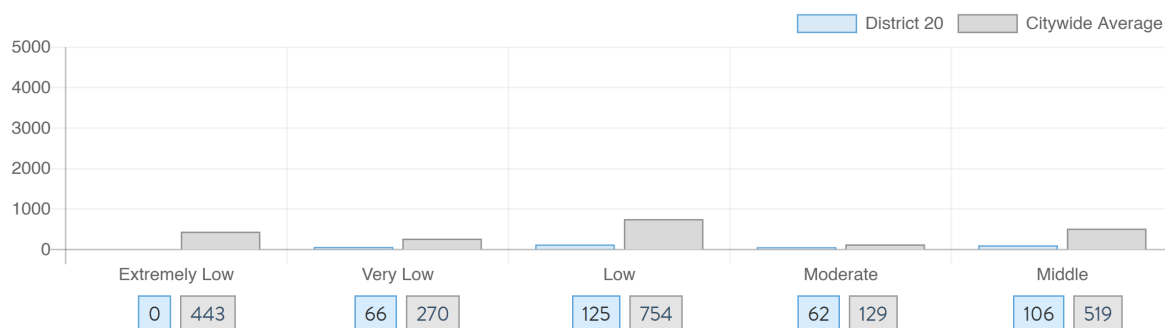
District 20 @SandraForNY1

College Point, Whitestone-Beechurst, Bay Terrace-Clearview, Murray Hill-Broadway Flushing, East Flushing, Flushing-Willets Point, Fort Totten, Auburndale, Bayside, Douglaston-Little Neck, Alley Pond Park

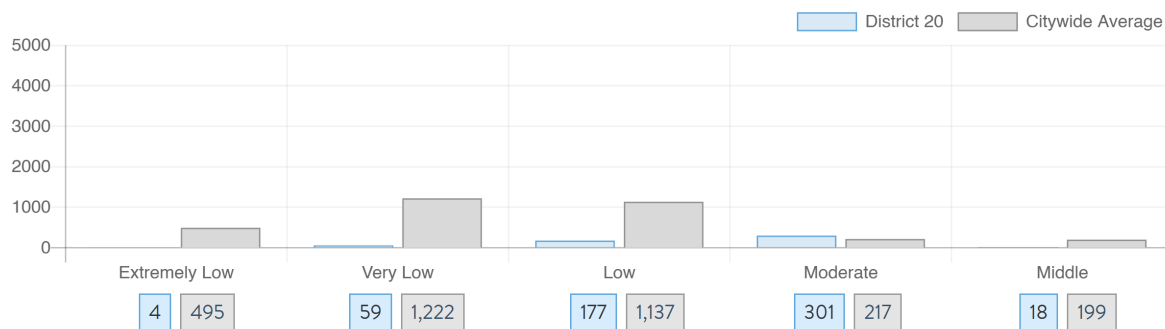
NYC
HOUSING TRACKER

What affordable housing is being produced?

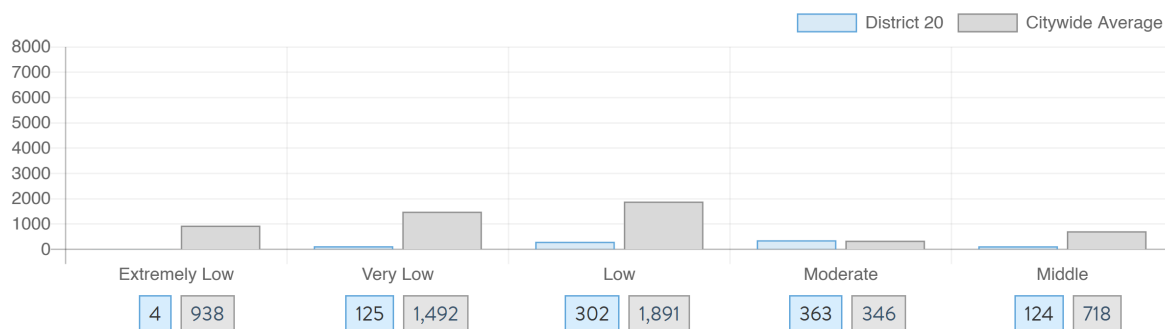
Affordable housing construction in district compared to Citywide average: 2014 - 2024



Affordable housing preserved in district: 2014 - 2024



Total affordable housing production in district: 2014 - 2024



Source: github.com/thenyhcitycouncil/districthousingtracker