

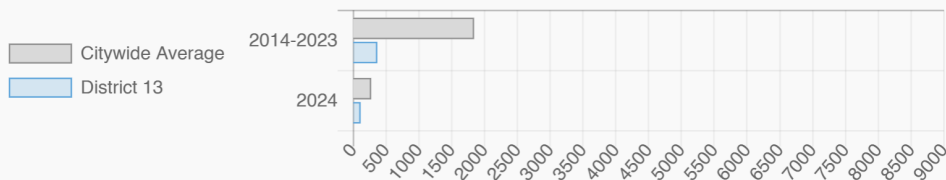
KRISTY MARMORATO

NY City Council
District 13

@KristyMarmorato

West Farms, Soundview-Bruckner-Bronx River, Castle Hill-Unionport, Westchester Square, Throgs Neck-Schuylerville, Pelham Bay-Country Club-City Island, Co-op City, Hart Island, Ferry Point Park-St. Raymond Cemetery, Pelham Parkway-Van Nest, Morris Park, Pelham Bay Park

Affordable Housing Construction in District: 2014-2024



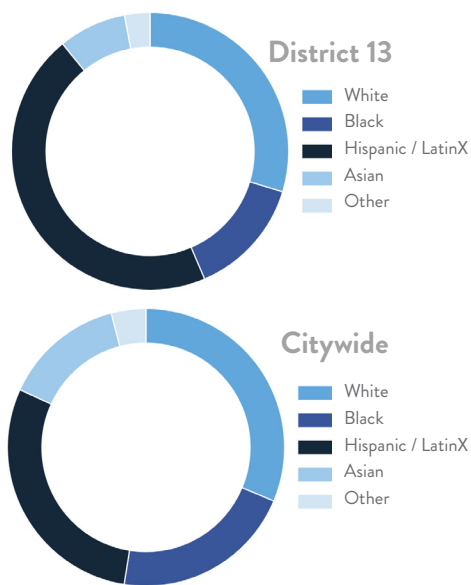
Every Neighborhood Must Do Its Part To Solve New York's Affordable Housing Crisis

In New York City 500,000 households pay more than half their income in rent and 140,000 people were homeless while statewide New York has a shortage of 711,000 apartments affordable to very low-income households according to the most recent estimates.

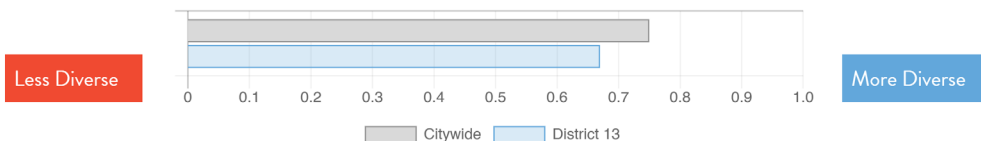


Ranked 38
IN AFFORDABLE
HOUSING

Who lives in District 13?



Racial Diversity Index



Demographics

Demographics	District 13	Citywide
Seniors – 65 And Older	15.9%	15.5%
Families With Children	26.6%	23.7%
Median Household Income	\$84,617	\$63,998
People Living Below Poverty Level	13.9%	17.2%

What is the housing stock in District 13?

Housing Stock	District 13	Citywide Avg Per District
NYCHA Units	2,990	3,033
Section 8 Units	2,905	3,149
Density: PPL Per Acre	21.8	44.7
Percent Homeowners	40.4%	32.9%
Percent Renters	59.6%	67.1%
Rent Regulated Units	6,300	18,837
Units In 1-4 Family Homes	66.5%	38.0%
Units In 5-19 Unit Buildings	6.6%	13.1%
Units In 20+ Unit Buildings	26.8%	48.7%

What are the housing needs in District 13?

Housing Need	District 13	Citywide Avg Per District
Rental Vacancy Rate	2.9%	3.6%
Rent Burdened Households	51.5%	49.6%
Severely Rent Burdened Households	29.2%	26.8%
Expiring Affordable Units 2025-2029	375	1,624
Percent Overcrowded	4.7%	5.3%
Code Violations Per 100 Units	29.4	26.4
NYCHA Capital Needs	\$1,714,551,988	\$1,467,444,775

Housing Production	District 13	Citywide Average
Housing Units In 2023	67,738	72,971
New Housing Units In 2024	134	740
Housing Units In 2024	67,872	73,711
Percent Change In 2024	0.20%	1.00%

KRISTY MARMORATO

NY City Council

District 13

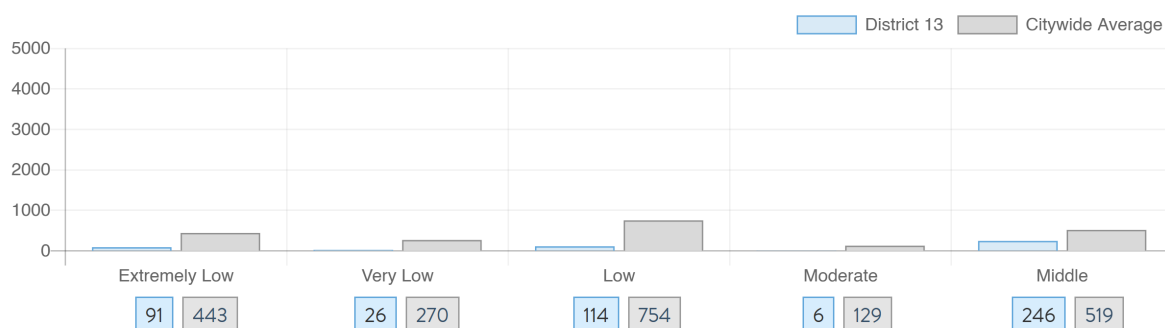
@KristyMarmorato

West Farms, Soundview-Bruckner-Bronx River, Castle Hill-Unionport, Westchester Square, Throgs Neck-Schuylerville, Pelham Bay-Country Club-City Island, Co-op City, Hart Island, Ferry Point Park-St. Raymond Cemetery, Pelham Parkway-Van Nest, Morris Park, Pelham Bay Park

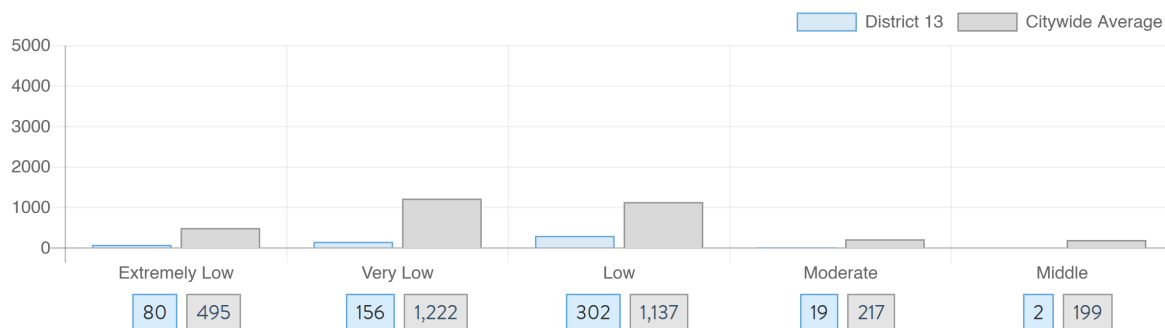
NYC
HOUSING TRACKER

What affordable housing is being produced?

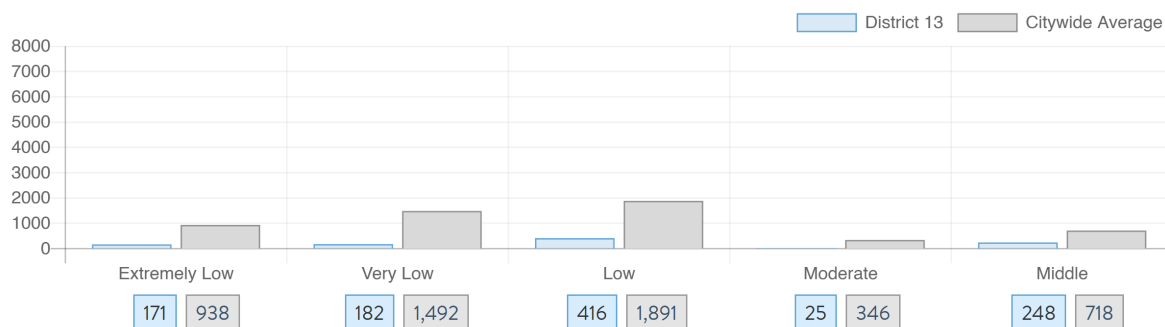
Affordable housing construction in district compared to Citywide average: 2014 - 2024



Affordable housing preserved in district: 2014 - 2024



Total affordable housing production in district: 2014 - 2024



Source: github.com/thenyhccitycouncil/districthousingtracker