

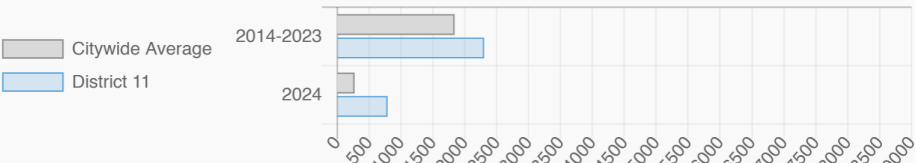
ERIC DINOWITZ

NY City Council

District 11 @EricDinowitz

Bedford Park, Norwood, Kingsbridge Heights-Van Cortlandt Village, Kingsbridge, Riverdale-Spuysen Duvvil, Wakefield-Woodlawn, Woodlawn Cemetery, Van Cortlandt Park

Affordable Housing Construction in District: 2014-2024



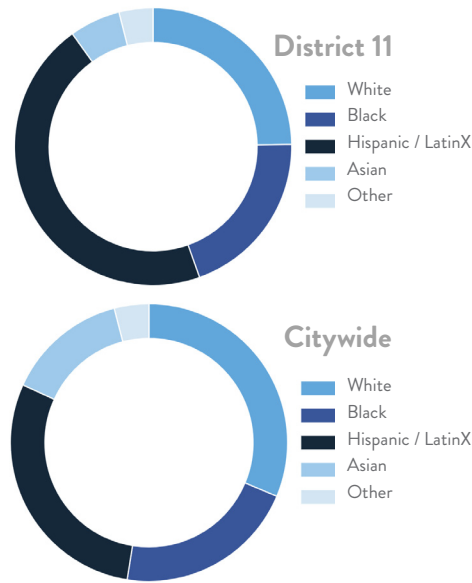
Every Neighborhood Must Do Its Part To Solve New York’s Affordable Housing Crisis

In New York City 500,000 households pay more than half their income in rent and 140,000 people were homeless while statewide New York has a shortage of 711,000 apartments affordable to very low-income households according to the most recent estimates.

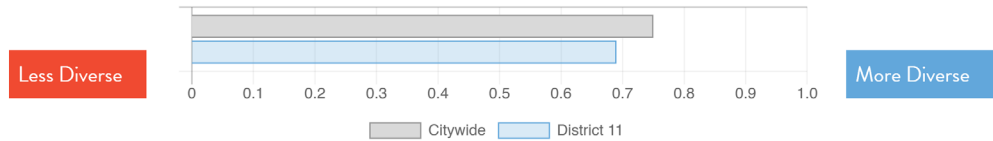


Ranked 14 IN AFFORDABLE HOUSING

Who lives in District 11?



Racial Diversity Index



Demographics	District 11	Citywide
Seniors – 65 And Older	17.3%	15.5%
Families With Children	25.4%	23.7%
Median Household Income	\$69,457	\$63,998
People Living Below Poverty Level	18.4%	17.2%

What are the housing needs in District 11?

Housing Need	District 11	Citywide Avg Per District
Rental Vacancy Rate	2.7%	3.6%
Rent Burdened Households	55.1%	49.6%
Severely Rent Burdened Households	30.6%	26.8%
Expiring Affordable Units 2025-2029	1,780	1,624
Percent Overcrowded	6.0%	5.3%
Code Violations Per 100 Units	41.9	26.4
NYCHA Capital Needs	\$0	\$1,467,444,775

What is the housing stock in District 11?

Housing Stock	District 11	Citywide Avg Per District
NYCHA Units	~	3,033
Section 8 Units	5,155	3,149
Density: PPL Per Acre	34.3	44.7
Percent Homeowners	31.6%	32.9%
Percent Renters	68.4%	67.1%
Rent Regulated Units	15,300	18,837
Units In 1-4 Family Homes	21.7%	38.0%
Units In 5-19 Unit Buildings	7.5%	13.1%
Units In 20+ Unit Buildings	70.5%	48.7%

Housing Production	District 11	Citywide Average
Housing Units In 2023	73,425	72,971
New Housing Units In 2024	1,203	740
Housing Units In 2024	74,628	73,711
Percent Change In 2024	1.64%	1.00%

ERIC DINOWITZ

NY City Council

District 11

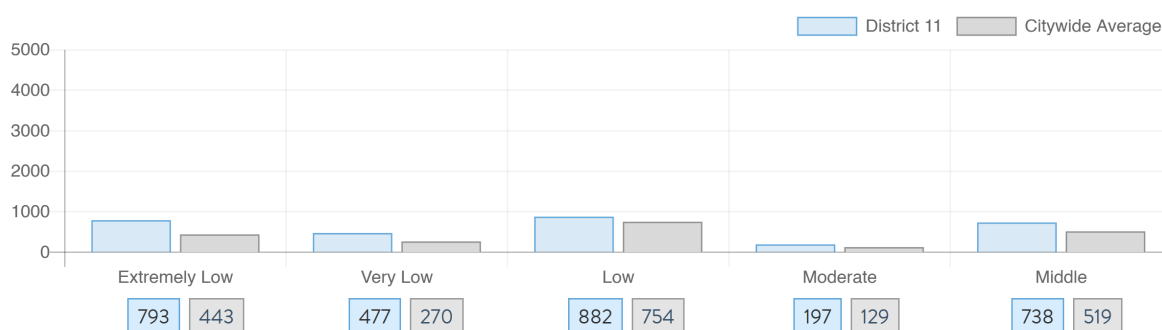
@EricDinowitz

Bedford Park, Norwood, Kingsbridge Heights-Van Cortlandt Village, Kingsbridge, Riverdale-Spuyten Duyvil, Wakefield-Woodlawn, Woodlawn Cemetery, Van Cortlandt Park

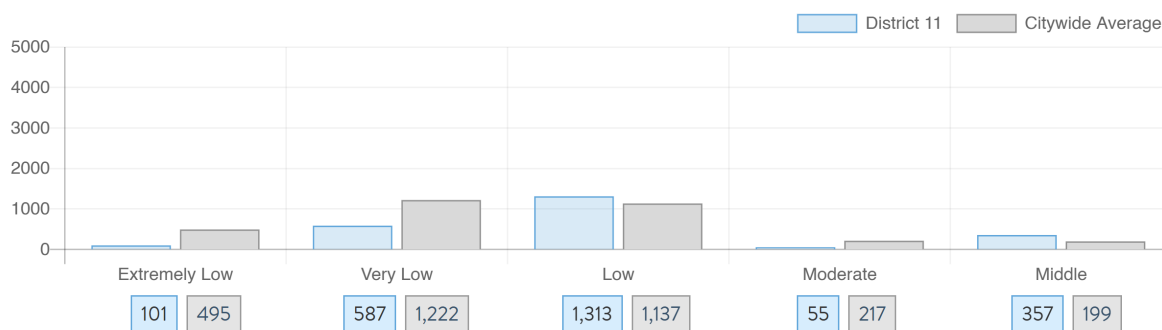
NYC
HOUSING TRACKER

What affordable housing is being produced?

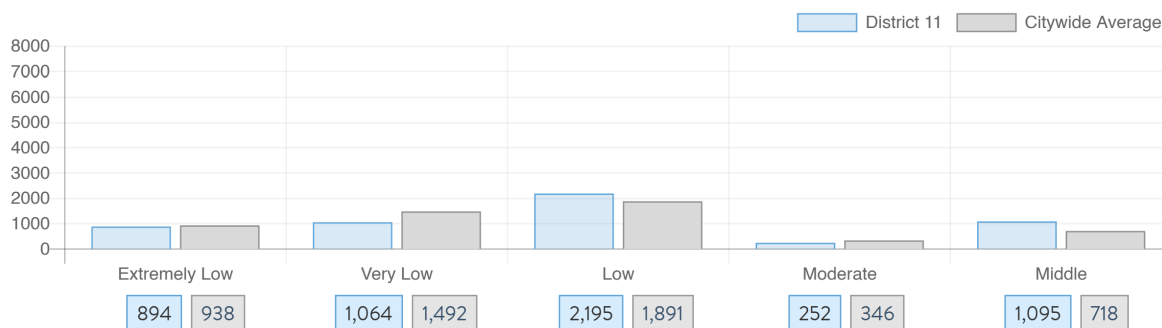
Affordable housing construction in district compared to Citywide average: 2014 - 2024



Affordable housing preserved in district: 2014 - 2024



Total affordable housing production in district: 2014 - 2024



Source: github.com/thenyhccitycouncil/districthousingtracker