

CHRISTOPHER MARTE

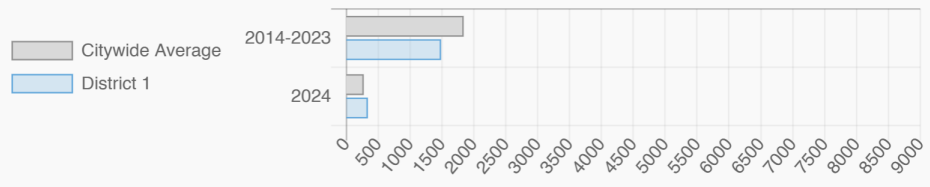
NY City Council

District 1

@ChrisMarteNYC

Financial District-Battery Park City, Tribeca-Civic Center, The Battery-Governors Island-Ellis Island-Liberty Island, SoHo-Little Italy-Hudson Square, Chinatown-Two Bridges, Lower East Side

Affordable Housing Construction in District: 2014-2024



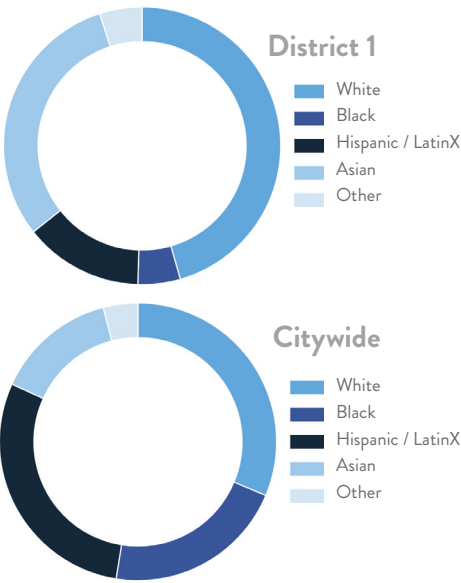
Every Neighborhood
Must Do Its Part To Solve
New York's Affordable
Housing Crisis

In New York City 500,000 households pay more than half their income in rent and 140,000 people were homeless while statewide New York has a shortage of 711,000 apartments affordable to very low-income households according to the most recent estimates.

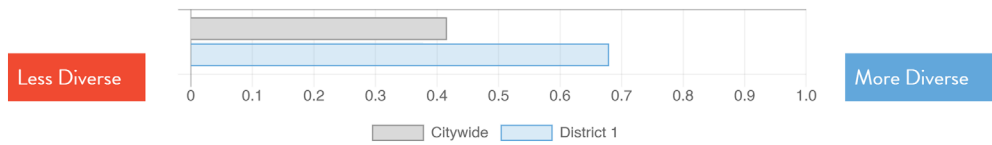


Ranked 21
IN AFFORDABLE
HOUSING

Who lives in District 1?



Racial Diversity Index



Demographics	District 1	Citywide
Seniors – 65 And Older	17.5%	15.5%
Families With Children	16.3%	23.7%
Median Household Income	\$109,352	\$63,998
People Living Below Poverty Level	15.6%	17.2%

What are the housing needs in District 1?

Housing Need	District 1	Citywide Avg Per District
Rental Vacancy Rate	4.6%	3.6%
Rent Burdened Households	43.2%	49.6%
Severely Rent Burdened Households	20.9%	26.8%
Expiring Affordable Units 2025-2029	2,458	1,624
Percent Overcrowded	3.2%	5.3%
Code Violations Per 100 Units	6.7	26.4
NYCHA Capital Needs	\$3,070,863,872	\$1,467,444,775

What is the housing stock in District 1?

Housing Stock	District 1	Citywide Avg Per District
NYCHA Units	6,739	3,033
Section 8 Units	1,469	3,149
Density: PPL Per Acre	91.7	44.7
Percent Homeowners	23.6%	32.9%
Percent Renters	76.4%	67.1%
Rent Regulated Units	14,100	18,837
Units In 1-4 Family Homes	3.9%	38.0%
Units In 5-19 Unit Buildings	20.1%	13.1%
Units In 20+ Unit Buildings	75.9%	48.7%

Housing Production	District 1	Citywide Average
Housing Units In 2023	96,391	72,971
New Housing Units In 2024	1,149	740
Housing Units In 2024	97,540	73,711
Percent Change In 2024	1.19%	1.00%

CHRISTOPHER MARTE

NY City Council

District 1

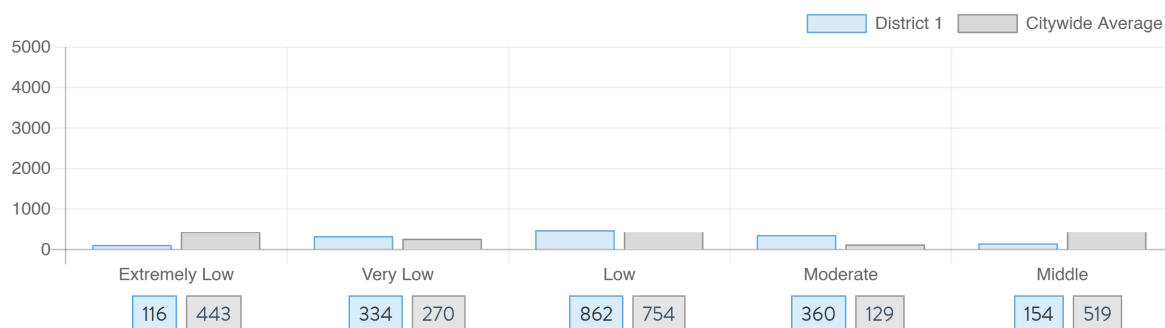
@ChrisMarteNYC

Financial District-Battery Park City, Tribeca-Civic Center, The Battery-Governors Island-Ellis Island-Liberty Island, SoHo-Little Italy-Hudson Square, Chinatown-Two Bridges, Lower East Side

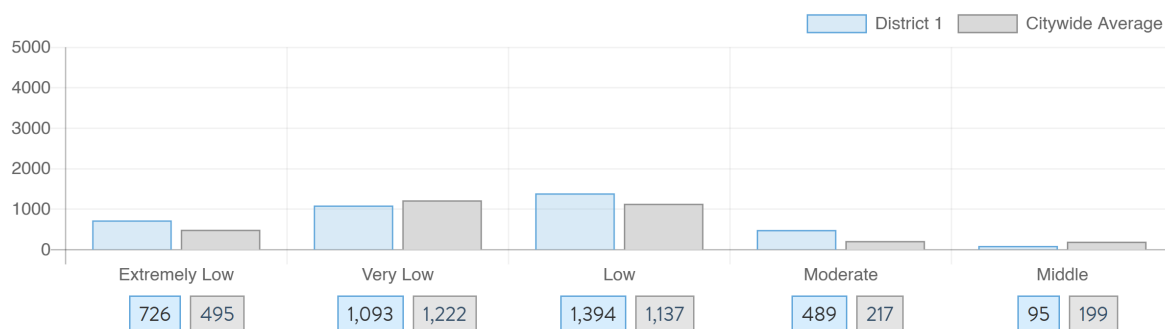
NYC
HOUSING TRACKER

What affordable housing is being produced?

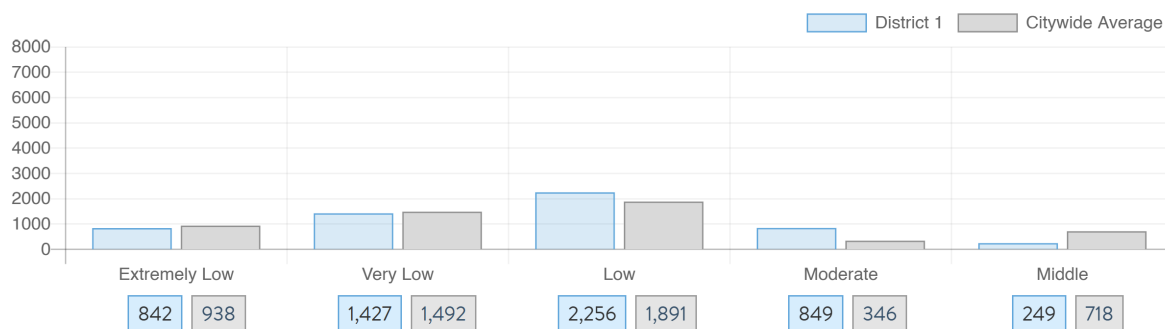
Affordable housing construction in district compared to Citywide average: 2014 - 2024



Affordable housing preserved in district: 2014 - 2024



Total affordable housing production in district: 2014 - 2024



Source: github.com/thenyhcitycouncil/districthousingtracker