

KRISTY MARMORATO

NY City Council  
District 13

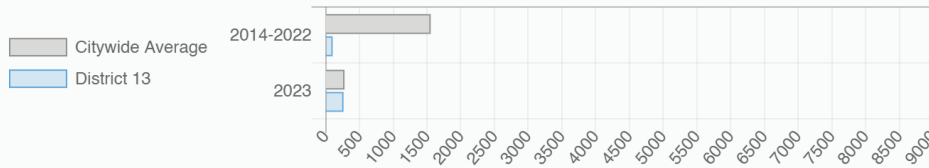
@KristyMarmorato

West Farms, Soundview-Bruckner-Bronx River, Castle Hill-Unionport, Westchester Square, Throgs Neck-Schuylerville, Pelham Bay-Country Club-City Island, Co-op City, Hart Island, Ferry Point Park-St. Raymond Cemetery, Pelham Parkway-Van Nest, Morris Park, Pelham Bay Park

## Every Neighborhood Must Do Its Part To Solve New York's Affordable Housing Crisis

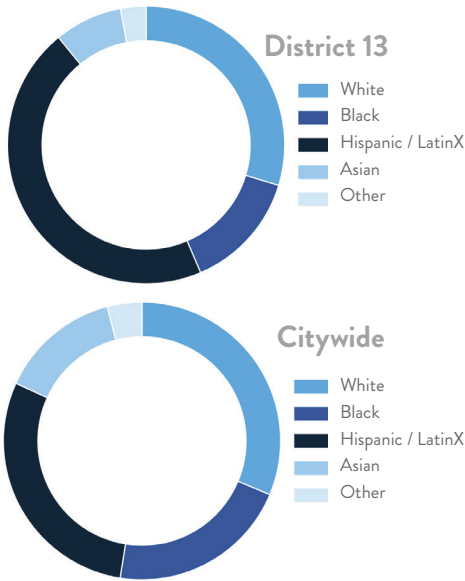
In New York City 500,000 households pay more than half their income in rent and 140,000 people were homeless while statewide New York has a shortage of 711,000 apartments affordable to very low-income households according to the most recent estimates.

### Affordable Housing Construction in District: 2014-2023

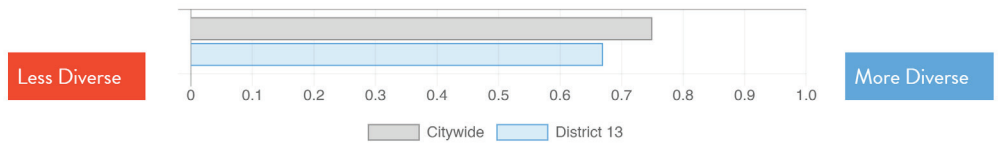


**Ranked 39**  
IN AFFORDABLE HOUSING

### Who lives in District 13?



### Racial Diversity Index



#### Demographics

Demographics	District 13	Citywide
Seniors – 65 And Older	15.9%	15.5%
Families With Children	26.6%	23.7%
Median Household Income	\$84,617	\$63,998
People Living Below Poverty Level	13.9%	17.2%

### What are the housing needs in District 13?

Housing Need	District 13	Citywide   Avg Per District
Rental Vacancy Rate	2.9%	3.6%
Rent Burdened Households	51.5%	49.6%
Severely Rent Burdened Households	29.2%	26.8%
Expiring Affordable Units 2024 – 2028	369	1,167
Percent Overcrowded	4.7%	5.3%
Code Violations Per 100 Units	22.7	22.8
NYCHA Capital Needs	\$1,861,278,381	\$1,554,897,315

### What is the housing stock in District 13?

Housing Stock	District 13	Citywide   Avg Per District
NYCHA Units	3,404	3,206
Section 8 Units	2,905	3,149
Density: PPL Per Acre	21.8	44.7
Percent Homeowners	40.4%	32.9%
Percent Renters	59.6%	67.1%
Rent Regulated Units	6,300	18,837
Units In 1-4 Family Homes	66.5%	38.0%
Units In 5-19 Unit Buildings	6.6%	13.1%
Units In 20+ Unit Buildings	26.8%	48.7%

Housing Production	District 13	Citywide Average
Housing Units In 2022	67,617	72,381
New Housing Units In 2023	633	587
Housing Units In 2023	67,738	72,968
Increase In 2023	0.18%	0.79%

KRISTY MARMORATO

NY City Council

District 13

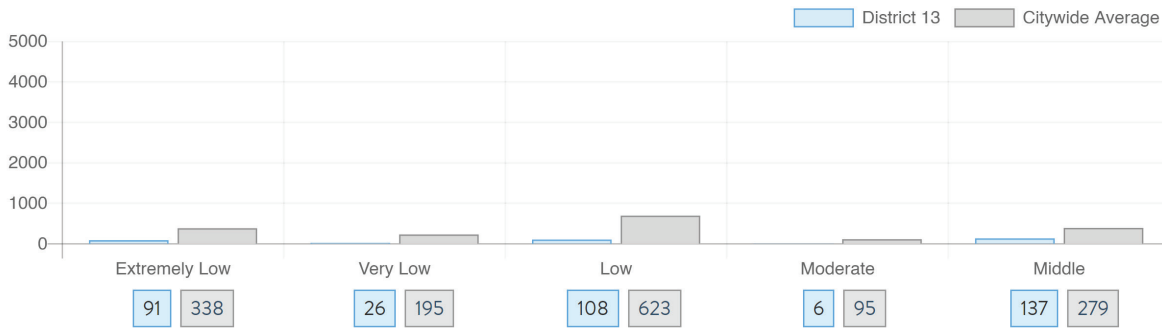
@KristyMarmorato

West Farms, Soundview-Bruckner-Bronx River, Castle Hill-Unionport, Westchester Square, Throgs Neck-Schuylerville, Pelham Bay-Country Club-City Island, Co-op City, Hart Island, Ferry Point Park-St. Raymond Cemetery, Pelham Parkway-Van Nest, Morris Park, Pelham Bay Park

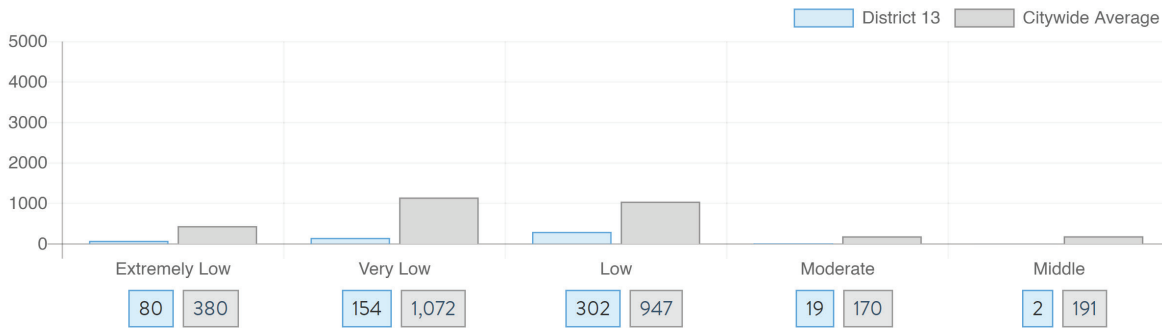
NYC HOUSING TRACKER

## What affordable housing is being produced?

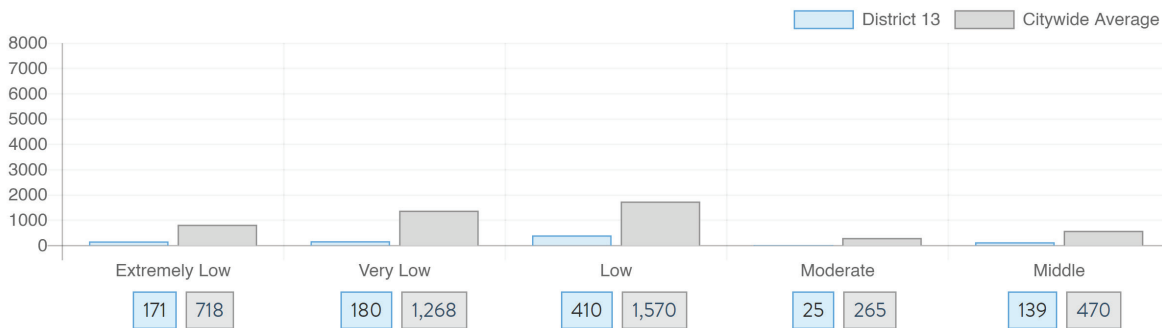
Affordable housing construction in district compared to Citywide average: 2014 - 2023



Affordable housing preserved in district: 2014 - 2023



Total affordable housing production in district: 2014 - 2023



Source: [github.com/thenyhccitycouncil/districthousingtracker](https://github.com/thenyhccitycouncil/districthousingtracker)