

DIANA AYALA

NY City Council

District 8

@DianaAyalaNYC

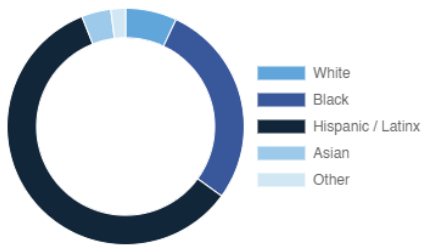
El Barrio/East Harlem, Mott Haven, Highbridge, Concourse, Longwood, Port Morris

Every Neighborhood Must Do Its Part To Solve New York's Affordable Housing Crisis

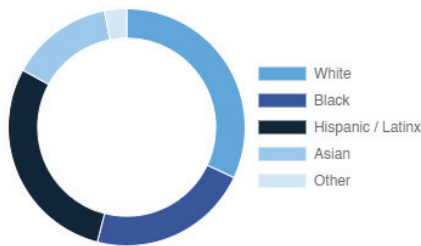
The New York metro area is facing a shortage of 772,000 apartments affordable to very low-income households, nearly 1 million households are rent burdened and more than 68,350 people are homeless in New York City according to the most recent estimate.

Who lives in District 8?

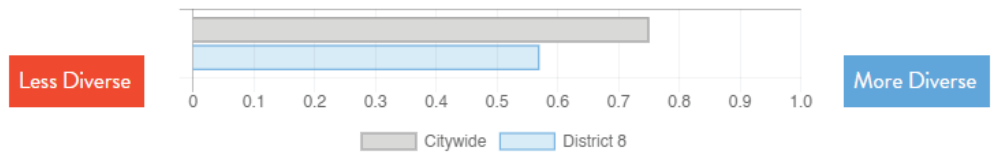
District 8



Citywide



Racial Diversity Index



Demographics	District 8	Citywide
Seniors – 65 And Older	11.2%	14.5%
Families With Children	26.3%	24.8%
Median Household Income	\$30,690	\$63,998
People Living Below Poverty Level	37.2%	17.9%

What are the housing needs in District 8?

Housing Need	District 8	Citywide Avg Per District
Rental Vacancy Rate	3.0%	3.4%
Rent Burdened Households	51.0%	52.5%
Percent Overcrowded	4.7%	3.7%
Code Violations Per 100 Units	20.2	12.1
NYCHA Capital Needs	\$4,300,912,020	\$787,949,140

Households Entering DHS Homeless Shelters	
Manhattan CB 11	1114
Bronx CB 1	1562

What is the housing stock in District 8?

Housing Stock	District 8	Citywide Avg Per District
NYCHA Units	18,293	3,243
Section 8 Units	7,742	2,538
Density: PPL Per Acre	76.4	45.8
Percent Homeowners	6.0%	32.7%
Percent Renters	94.0%	67.3%
Rent Regulated Units	26,000	18,980
Units In 1-4 Family Homes	8.7%	38.5%
Units In 5-19 Unit Buildings	16.4%	12.9%
Units In 20+ Unit Buildings	74.7%	48.4%

Housing Production	District 8	Citywide Average
Housing Units In 2013	64,739	67,275
New Housing Units 2014 – 2020	5,260	3,051
Housing Units In 2020	69,999	70,326
Increase From 2013	8.10%	4.5%

DIANA AYALA

NY City Council

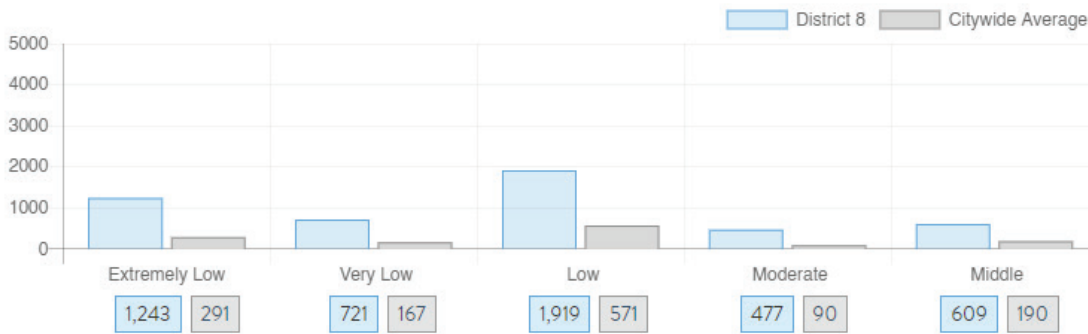
District 8

@DianaAyalaNYC

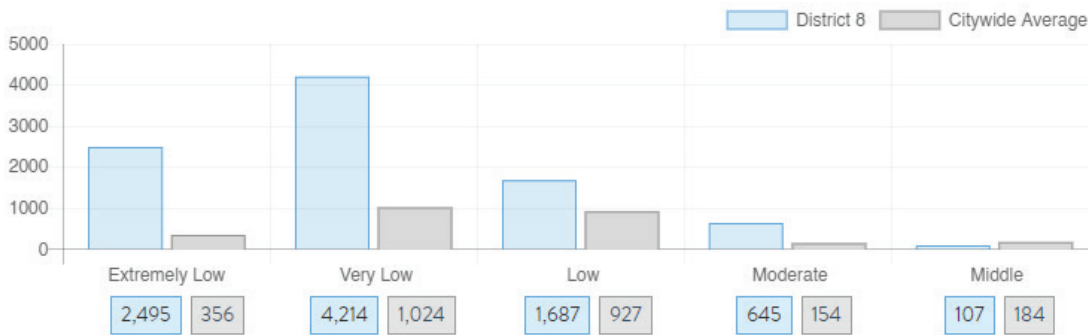
El Barrio/East Harlem, Mott Haven, Highbridge, Concourse, Longwood, Port Morris

What affordable housing is being produced?

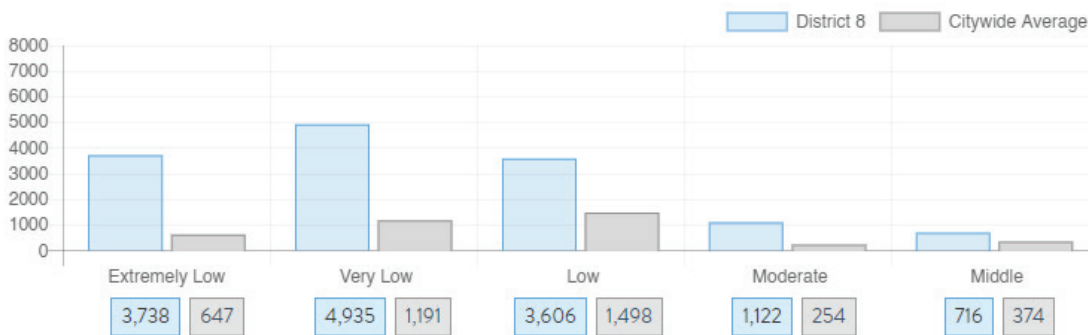
Affordable housing construction in district compared to Citywide average: 2014 - 2021



Affordable housing preserved in district: 2014 - 2021



Total affordable housing production in district: 2014 - 2021



Source: github.com/thenyhcc/citycouncildistricthousingtracker