

KAMILLAH HANKS

NY City Council District 49

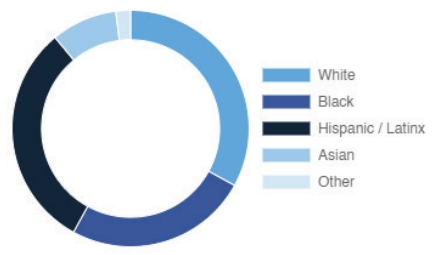
Arlington, Clifton, Clove Lakes, Concord, Elm Park, Graniteville, Livingston, Mariners Harbor, New Brighton, Port Richmond, Randall Manor, Rosebank, St. George, Snug Harbor, Silver Lake, Stapleton, Sunnyside, West Brighton and Tompkinsville

Every Neighborhood Must Do Its Part To Solve New York's Affordable Housing Crisis

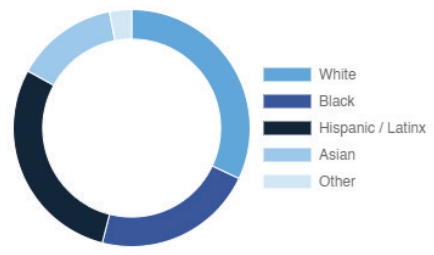
The New York metro area is facing a shortage of 772,000 apartments affordable to very low-income households, nearly 1 million households are rent burdened and more than 68,350 people are homeless in New York City according to the most recent estimate.

Who lives in District 49?

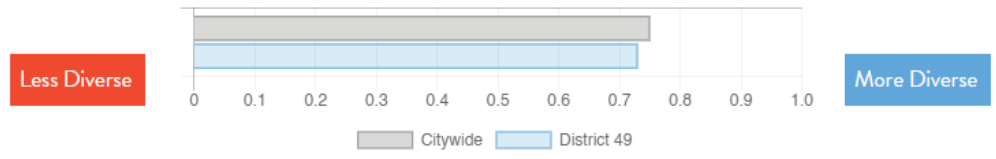
District 49



Citywide



Racial Diversity Index



Demographics	District 49	Citywide
Seniors – 65 And Older	13.3%	14.5%
Families With Children	30.7%	24.8%
Median Household Income	\$68,715	\$63,998
People Living Below Poverty Level	19.5%	17.9%

What are the housing needs in District 49?

Housing Need	District 49	Citywide Avg Per District
Rental Vacancy Rate	8.5%	3.4%
Rent Burdened Households	59.3%	52.5%
Percent Overcrowded	1.8%	3.7%
Code Violations Per 100 Units	7.6	12.1
NYCHA Capital Needs	\$1,031,298,218	\$787,949,140

Households Entering DHS Homeless Shelters	
Staten Island CB 1	521

What is the housing stock in District 49?

Housing Stock	District 49	Citywide Avg Per District
NYCHA Units	3,511	3,243
Section 8 Units	2,681	2,538
Density: PPL Per Acre	18.9	45.8
Percent Homeowners	51.5%	32.7%
Percent Renters	48.5%	67.3%
Rent Regulated Units	7,000	18,980
Units In 1-4 Family Homes	74.1%	38.5%
Units In 5-19 Unit Buildings	4.7%	12.9%
Units In 20+ Unit Buildings	20.7%	48.4%

Housing Production	District 49	Citywide Average
Housing Units In 2013	59,117	67,275
New Housing Units 2014 – 2020	1,189	3,051
Housing Units In 2020	60,306	70,326
Increase From 2013	2.0%	4.5%

KAMILLAH HANKS

NY City Council

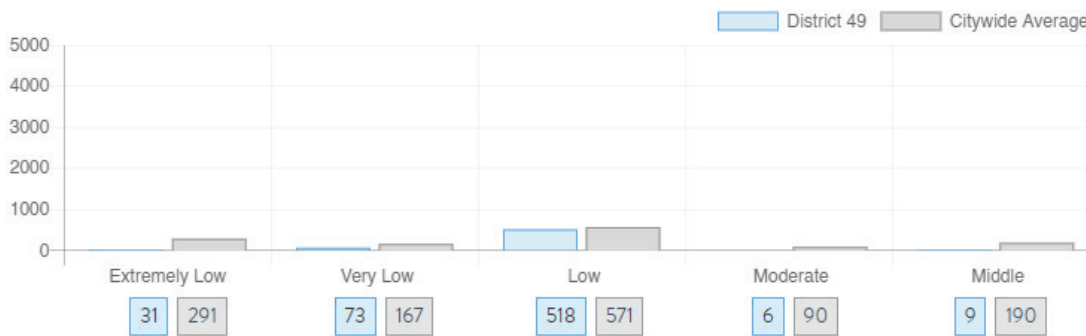
District 49

Arlington, Clifton, Clove Lakes, Concord, Elm Park, Graniteville, Livingston, Mariners Harbor, New Brighton, Port Richmond, Randall Manor, Rosebank, St. George, Snug Harbor, Silver Lake, Stapleton, Sunnyside, West Brighton and Tompkinsville

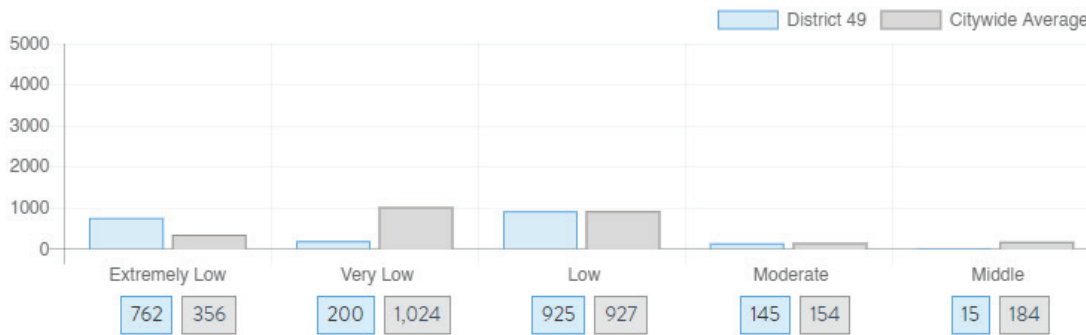


What affordable housing is being produced?

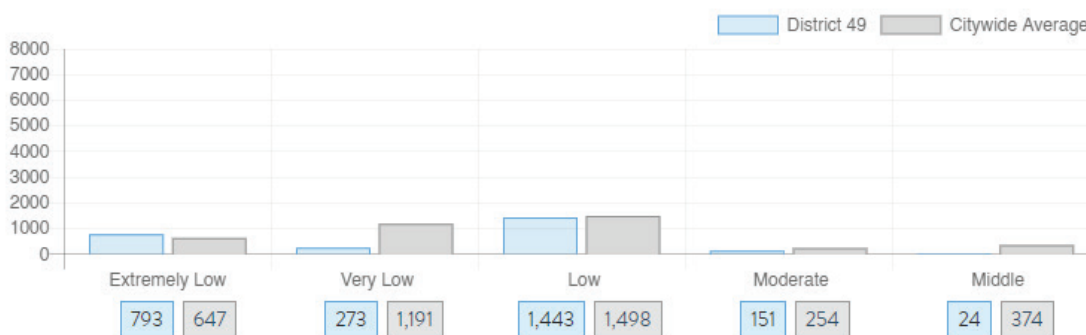
Affordable housing construction in district compared to Citywide average: 2014 - 2021



Affordable housing preserved in district: 2014 - 2021



Total affordable housing production in district: 2014 - 2021



Source: github.com/thenyhccitycouncil/districthousingtracker