

FARAH LOUIS

NY City Council
District 45

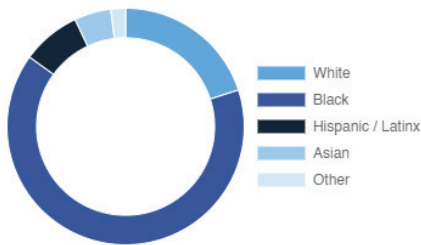
Flatbush, East Flatbush, Midwood, Marine Park, Flatlands, Kensington

Every Neighborhood Must Do Its Part To Solve New York's Affordable Housing Crisis

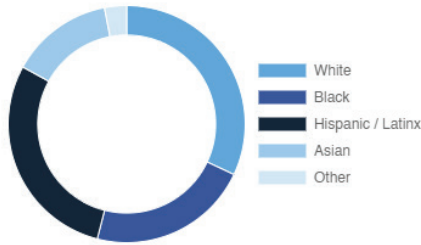
The New York metro area is facing a shortage of 772,000 apartments affordable to very low-income households, nearly 1 million households are rent burdened and more than 68,350 people are homeless in New York City according to the most recent estimate.

Who lives in District 45?

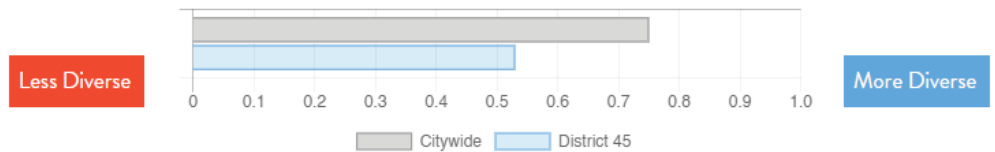
District 45



Citywide



Racial Diversity Index



Demographics	District 45	Citywide
Seniors – 65 And Older	15.7%	14.5%
Families With Children	28.0%	24.8%
Median Household Income	\$70,869	\$63,998
People Living Below Poverty Level	12.5%	17.9%

What are the housing needs in District 45?

Housing Need	District 45	Citywide Avg Per District
Rental Vacancy Rate	3.5%	3.4%
Rent Burdened Households	53.2%	52.5%
Percent Overcrowded	3.7%	3.7%
Code Violations Per 100 Units	23.8	12.1
NYCHA Capital Needs	\$350,162,547	\$787,949,140

Households Entering DHS Homeless Shelters	
Brooklyn CB 14	370
Brooklyn CB 17	914
Brooklyn CB 18	640

What is the housing stock in District 45?

Housing Stock	District 45	Citywide Avg Per District
NYCHA Units	1,187	3,243
Section 8 Units	1,277	2,538
Density: PPL Per Acre	58.9	45.8
Percent Homeowners	42.4%	32.7%
Percent Renters	57.6%	67.3%
Rent Regulated Units	17,000	18,980
Units In 1-4 Family Homes	57.8%	38.5%
Units In 5-19 Unit Buildings	7.1%	12.9%
Units In 20+ Unit Buildings	34.9%	48.4%

Housing Production	District 45	Citywide Average
Housing Units In 2013	57,119	67,275
New Housing Units 2014 – 2020	752	3,051
Housing Units In 2020	57,871	70,326
Increase From 2013	1.3%	4.5%

FARAH LOUIS

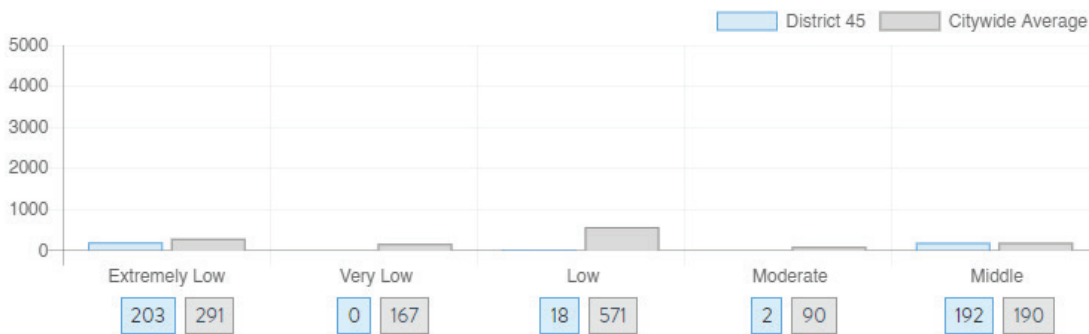
NY City Council

District 45

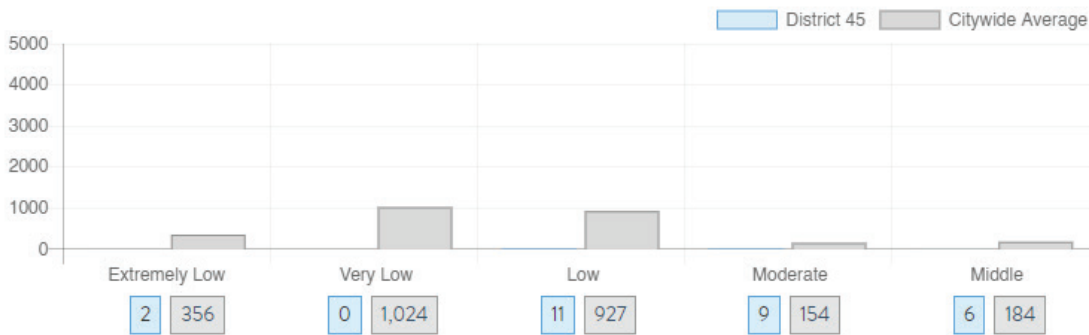
Flatbush, East Flatbush, Midwood, Marine Park, Flatlands, Kensington

What affordable housing is being produced?

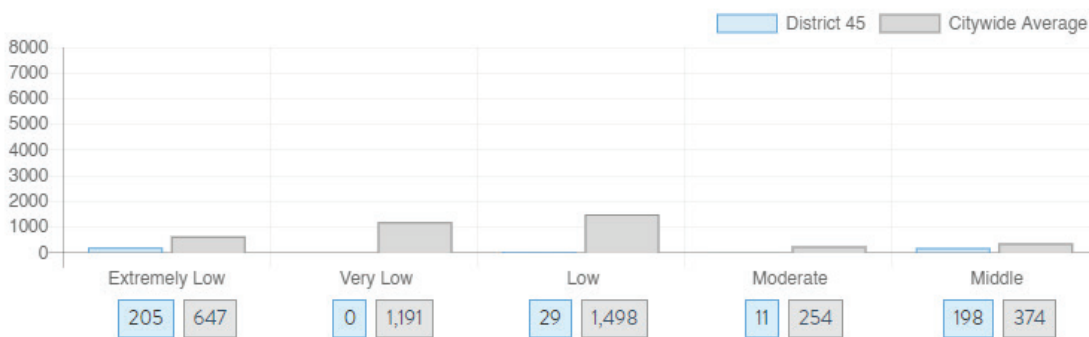
Affordable housing construction in district compared to Citywide average: 2014 - 2021



Affordable housing preserved in district: 2014 - 2021



Total affordable housing production in district: 2014 - 2021



Source: github.com/thenyhcc/citycouncildistricthousingtracker