

KEITH POWERS

NY City Council

District 4 @KeithPowersNYC

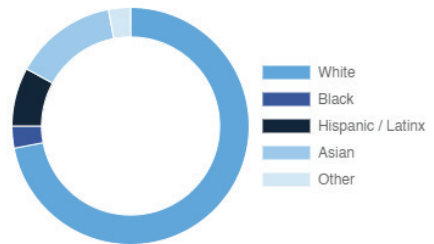
Upper East Side, Carnegie Hill, Yorkville, Central Park South, Midtown East, Times Square, Koreatown, Stuyvesant Town and Peter Cooper Village, Waterside Plaza, Tudor City, Turtle Bay, Murray Hill, Sutton Place

Every Neighborhood Must Do Its Part To Solve New York's Affordable Housing Crisis

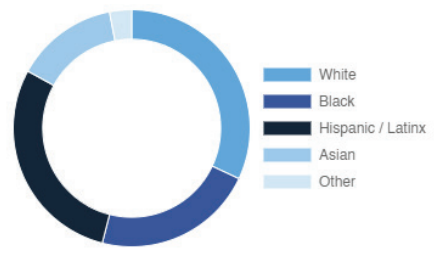
The New York metro area is facing a shortage of 772,000 apartments affordable to very low-income households, nearly 1 million households are rent burdened and more than 68,350 people are homeless in New York City according to the most recent estimate.

Who lives in District 4?

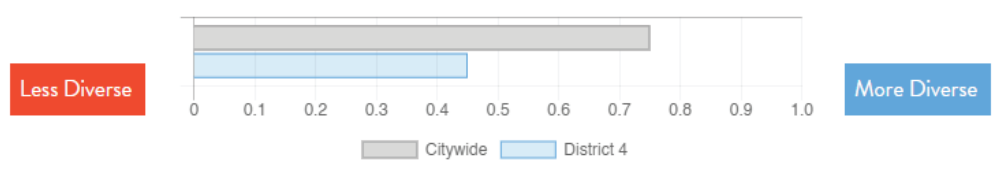
District 4



Citywide



Racial Diversity Index



Demographics	District 4	Citywide
Seniors – 65 And Older	22.4%	14.5%
Families With Children	13.9%	24.8%
Median Household Income	\$156,132	\$63,998
People Living Below Poverty Level	6.5%	17.9%

What are the housing needs in District 4?

Housing Need	District 4	Citywide Avg Per District
Rental Vacancy Rate	6.7%	3.4%
Rent Burdened Households	42.3%	52.5%
Percent Overcrowded	2.0%	3.7%
Code Violations Per 100 Units	1.6	12.1
NYCHA Capital Needs	0	\$787,949,140

Households Entering DHS Homeless Shelters	
Manhattan CB 5	136
Manhattan CB 6	124
Manhattan CB 8	82

What is the housing stock in District 4?

Housing Stock	District 4	Citywide Avg Per District
NYCHA Units	-	3,243
Section 8 Units	189	2,538
Density: PPL Per Acre	97.4	45.8
Percent Homeowners	40.1%	32.7%
Percent Renters	59.9%	67.3%
Rent Regulated Units	24,000	18,980
Units In 1-4 Family Homes	4.2%	38.5%
Units In 5-19 Unit Buildings	8.9%	12.9%
Units In 20+ Unit Buildings	86.9%	48.4%

Housing Production	District 4	Citywide Average
Housing Units In 2013	111,305	67,275
New Housing Units 2014 – 2020	4,536	3,051
Housing Units In 2020	115,841	70,326
Increase From 2013	4.10%	4.5%

KEITH POWERS

NY City Council

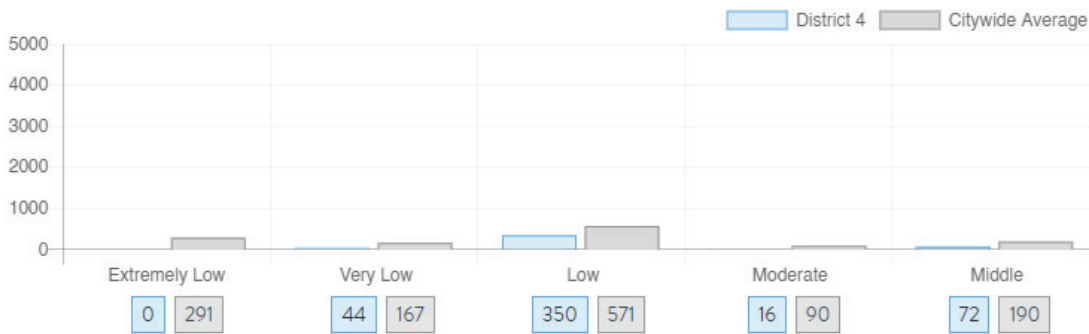
District 4

@KeithPowersNYC

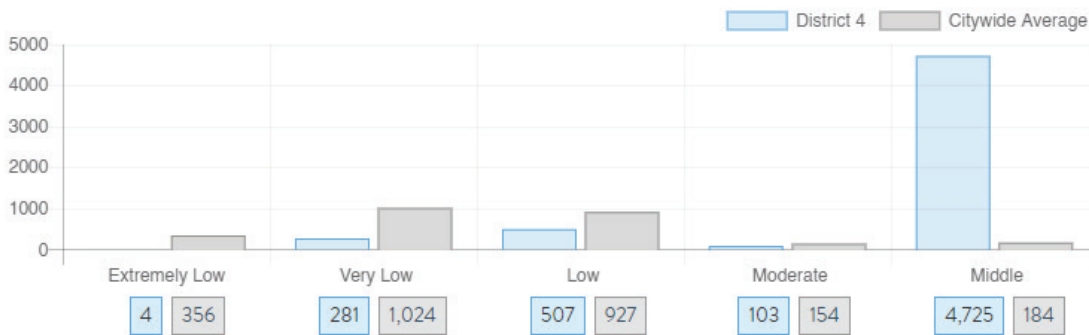
Upper East Side, Carnegie Hill, Yorkville, Central Park South, Midtown East, Times Square, Koreatown, Stuyvesant Town and Peter Cooper Village, Waterside Plaza, Tudor City, Turtle Bay, Murray Hill, Sutton Place

What affordable housing is being produced?

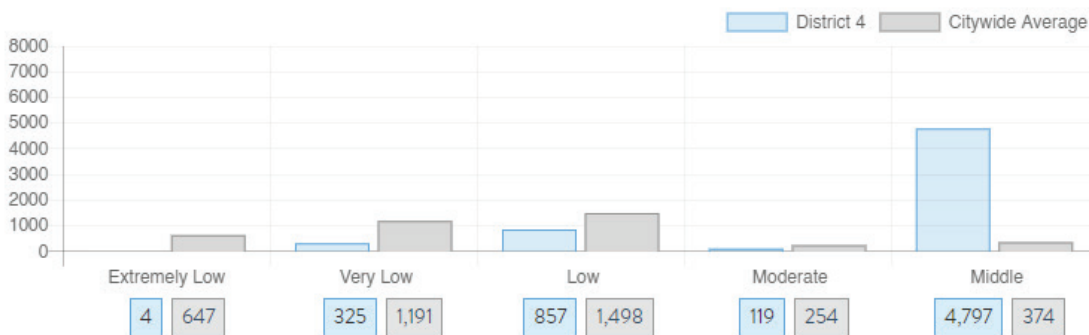
Affordable housing construction in district compared to Citywide average: 2014 - 2021



Affordable housing preserved in district: 2014 - 2021



Total affordable housing production in district: 2014 - 2021



Source: github.com/thenyhcc/citycouncildistricthousingtracker