

CARLINA RIVERA

NY City Council

District 2

@CarlinaRivera

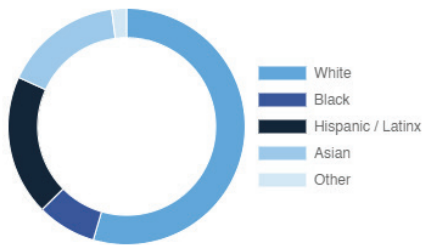
East Village, Gramercy Park, Kips Bay, Lower East Side, Murray Hill, Rose Hill

Every Neighborhood Must Do Its Part To Solve New York's Affordable Housing Crisis

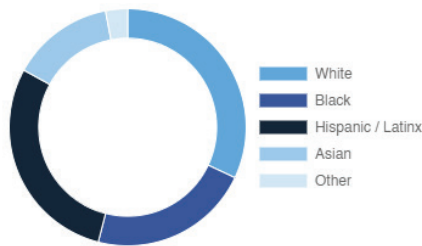
The New York metro area is facing a shortage of 772,000 apartments affordable to very low-income households, nearly 1 million households are rent burdened and more than 68,350 people are homeless in New York City according to the most recent estimate.

Who lives in District 2?

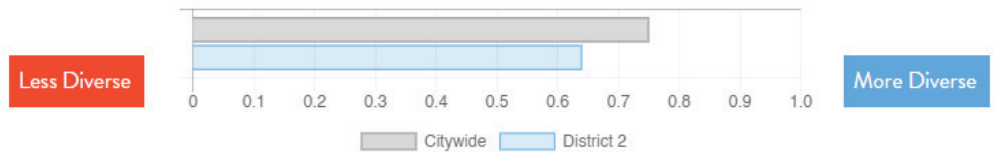
District 2



Citywide



Racial Diversity Index



Demographics	District 2	Citywide
Seniors – 65 And Older	15.2%	14.5%
Families With Children	10.0%	24.8%
Median Household Income	\$89,488	\$63,998
People Living Below Poverty Level	18.6%	17.9%

What are the housing needs in District 2?

Housing Need	District 2	Citywide Avg Per District
Rental Vacancy Rate	5.7%	3.4%
Rent Burdened Households	42.2%	52.5%
Percent Overcrowded	2.6%	3.7%
Code Violations Per 100 Units	5.4	12.1
NYCHA Capital Needs	\$2,251,510,612	\$787,949,140

Households Entering DHS Homeless Shelters	
Manhattan CB 3	495
Manhattan CB 6	124
Manhattan CB 5	136

What is the housing stock in District 2?

Housing Stock	District 2	Citywide Avg Per District
NYCHA Units	9,496	3,243
Section 8 Units	1,811	2,538
Density: PPL Per Acre	147.9	45.8
Percent Homeowners	22.4%	32.7%
Percent Renters	77.6%	67.3%
Rent Regulated Units	26,000	18,980
Units In 1-4 Family Homes	4.0%	38.5%
Units In 5-19 Unit Buildings	19.8%	12.9%
Units In 20+ Unit Buildings	76.1%	48.4%

Housing Production	District 2	Citywide Average
Housing Units In 2013	93,764	67,275
New Housing Units 2014 – 2020	2,576	3,051
Housing Units In 2020	96,340	70,326
Increase From 2013	2.70%	4.5%

CARLINA RIVERA

NY City Council

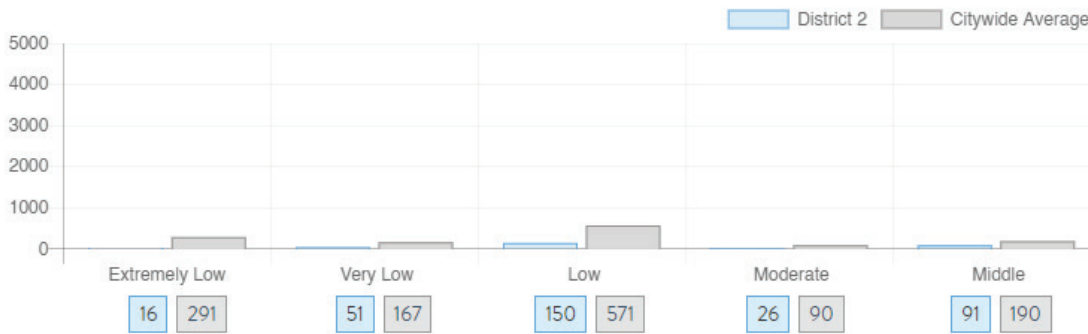
District 2

@CarlinaRivera

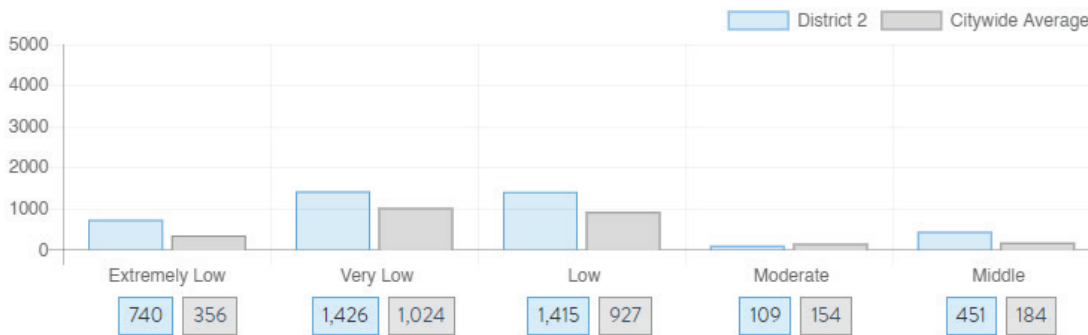
East Village, Gramercy Park, Kips Bay, Lower East Side, Murray Hill, Rose Hill

What affordable housing is being produced?

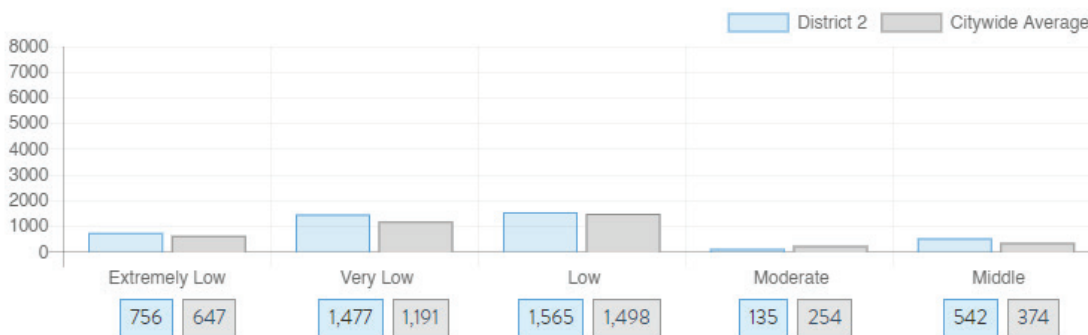
Affordable housing construction in district compared to Citywide average: 2014 - 2021



Affordable housing preserved in district: 2014 - 2021



Total affordable housing production in district: 2014 - 2021



Source: github.com/thenyhccitycouncil/districthousingtracker