

ALTHEA STEVENS

NY City Council

District 16

@althea4theBX

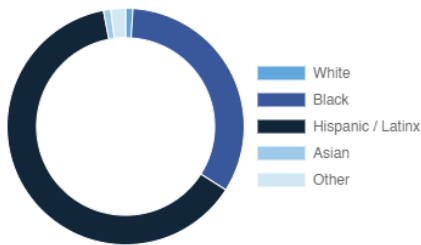
Claremont, Concourse, Concourse Village, Highbridge, Morris Heights, Mount Eden, Morrisania

Every Neighborhood Must Do Its Part To Solve New York's Affordable Housing Crisis

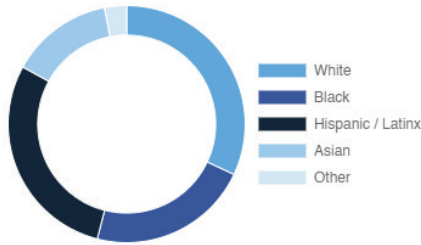
The New York metro area is facing a shortage of 772,000 apartments affordable to very low-income households, nearly 1 million households are rent burdened and more than 68,350 people are homeless in New York City according to the most recent estimate.

Who lives in District 16?

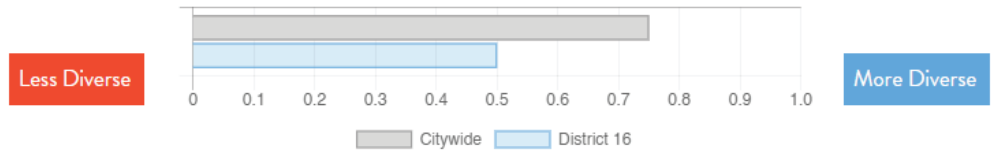
District 16



Citywide



Racial Diversity Index



Demographics	District 16	Citywide
Seniors – 65 And Older	8.8%	14.5%
Families With Children	35.7%	24.8%
Median Household Income	\$32,201	\$63,998
People Living Below Poverty Level	37.3%	17.9%

What are the housing needs in District 16?

Housing Need	District 16	Citywide Avg Per District
Rental Vacancy Rate	1.8%	3.4%
Rent Burdened Households	57.4%	52.5%
Percent Overcrowded	7.0%	3.7%
Code Violations Per 100 Units	30.2	12.1
NYCHA Capital Needs	\$2,104,645,927	\$787,949,140

Households Entering DHS Homeless Shelters	
Bronx CB 4	1580
Bronx CB 3	1444

What is the housing stock in District 16?

Housing Stock	District 16	Citywide Avg Per District
NYCHA Units	9,224	3,243
Section 8 Units	7,074	2,538
Density: PPL Per Acre	118.1	45.8
Percent Homeowners	4.3%	32.7%
Percent Renters	95.7%	67.3%
Rent Regulated Units	38,000	18,980
Units In 1-4 Family Homes	10.5%	38.5%
Units In 5-19 Unit Buildings	10.7%	12.9%
Units In 20+ Unit Buildings	78.6%	48.4%

Housing Production	District 16	Citywide Average
Housing Units In 2013	58,729	67,275
New Housing Units 2014 – 2020	2,272	3,051
Housing Units In 2020	61,001	70,326
Increase From 2013	3.9%	4.5%

ALTHEA STEVENS

NY City Council

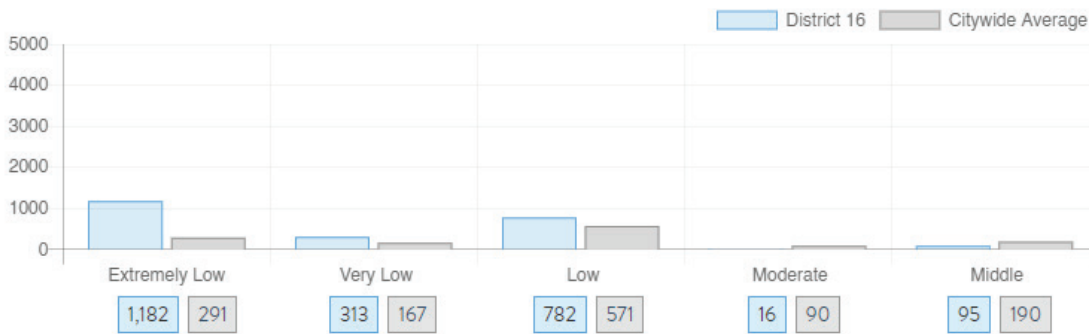
District 16

@althea4theBX

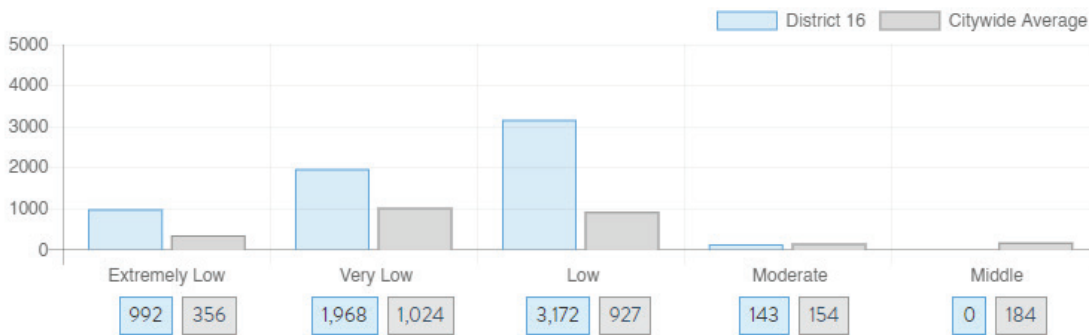
Claremont, Concourse, Concourse Village, Highbridge, Morris Heights, Mount Eden, Morrisania

What affordable housing is being produced?

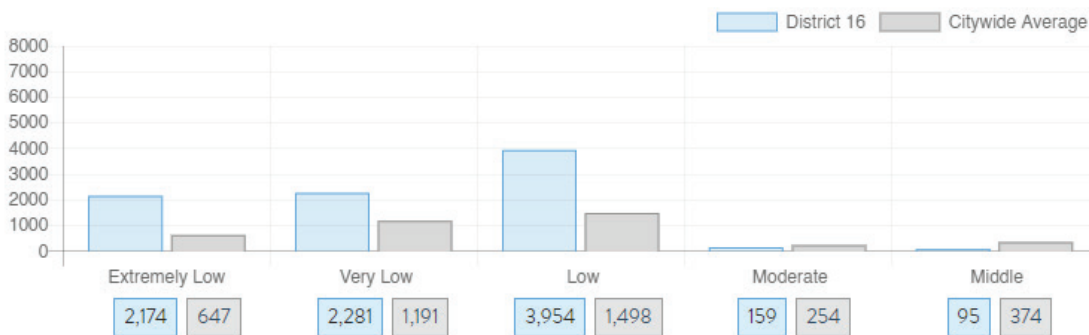
Affordable housing construction in district compared to Citywide average: 2014 - 2021



Affordable housing preserved in district: 2014 - 2021



Total affordable housing production in district: 2014 - 2021



Source: github.com/thenyhcc/citycouncildistricthousingtracker