

OSWALD FELIZ

NY City Council

District 15

@OswaldFeliz

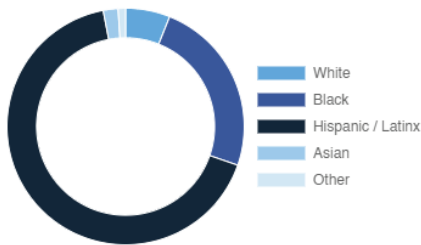
Bedford Park, Fordham, Mount Hope, Bathgate, Belmont, East Tremont, West Farms, Van Nest, Allerton, Olinville

Every Neighborhood Must Do Its Part To Solve New York's Affordable Housing Crisis

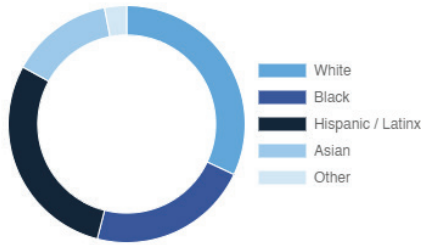
The New York metro area is facing a shortage of 772,000 apartments affordable to very low-income households, nearly 1 million households are rent burdened and more than 68,350 people are homeless in New York City according to the most recent estimate.

Who lives in District 15?

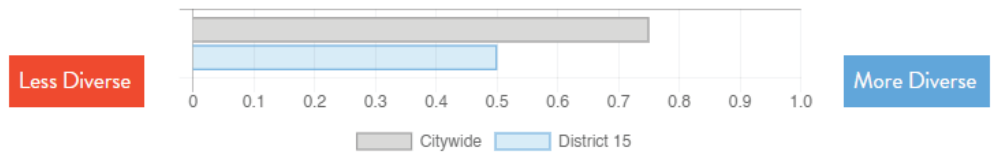
District 15



Citywide



Racial Diversity Index



Demographics	District 15	Citywide
Seniors – 65 And Older	10.4%	14.5%
Families With Children	34.5%	24.8%
Median Household Income	\$35,234	\$63,998
People Living Below Poverty Level	34.0%	17.9%

What are the housing needs in District 15?

Housing Need	District 15	Citywide Avg Per District
Rental Vacancy Rate	2.0%	3.4%
Rent Burdened Households	59.1%	52.5%
Percent Overcrowded	6.2%	3.7%
Code Violations Per 100 Units	36.9	12.1
NYCHA Capital Needs	\$355,591,510	\$787,949,140

Households Entering DHS Homeless Shelters	
Bronx CB 6	1204

What is the housing stock in District 15?

Housing Stock	District 15	Citywide Avg Per District
NYCHA Units	1,551	3,243
Section 8 Units	9,980	2,538
Density: PPL Per Acre	76.5	45.8
Percent Homeowners	8.0%	32.7%
Percent Renters	92.0%	67.3%
Rent Regulated Units	33,000	18,980
Units In 1-4 Family Homes	17.3%	38.5%
Units In 5-19 Unit Buildings	11.9%	12.9%
Units In 20+ Unit Buildings	70.5%	48.4%

Housing Production	District 15	Citywide Average
Housing Units In 2013	60,863	67,275
New Housing Units 2014 – 2020	3,372	3,051
Housing Units In 2020	64,235	70,326
Increase From 2013	5.5%	4.5%

OSWALD FELIZ

NY City Council

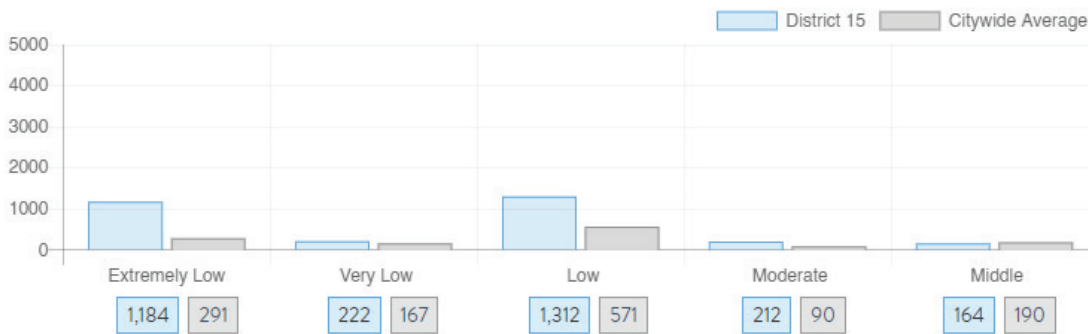
District 15

@OswaldFeliz

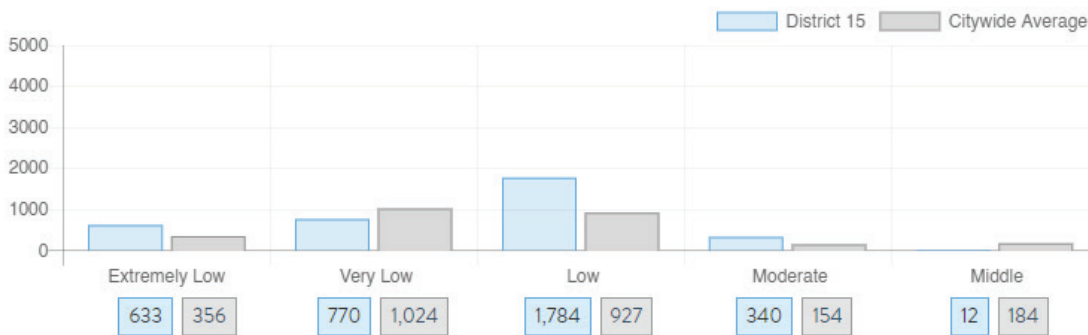
Bedford Park, Fordham, Mount Hope, Bathgate, Belmont, East Tremont, West Farms, Van Nest, Allerton, Olinville

What affordable housing is being produced?

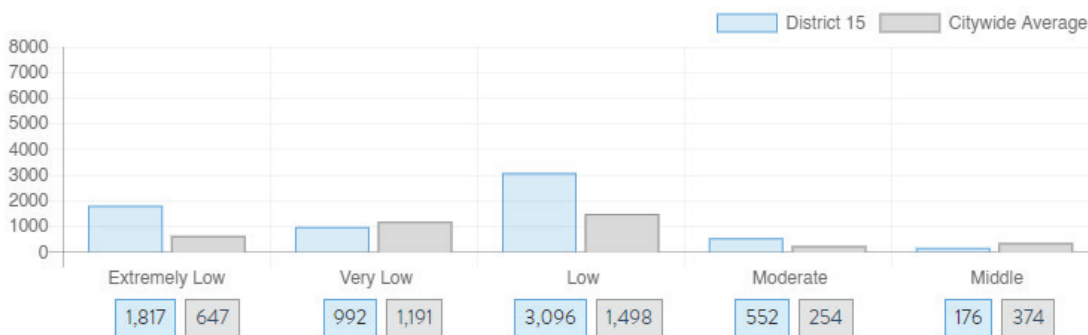
Affordable housing construction in district compared to Citywide average: 2014 - 2021



Affordable housing preserved in district: 2014 - 2021



Total affordable housing production in district: 2014 - 2021



Source: github.com/thenyhcc/citycouncildistricthousingtracker