

ERIC DINOWITZ

NY City Council

District 11

@EricDinowitz

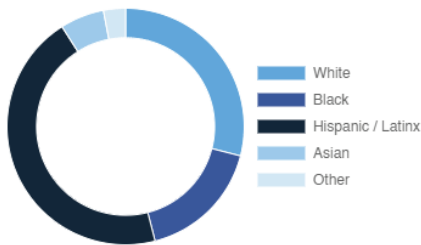
Bedford Park, Kingsbridge, Riverdale, Norwood, Van Cortlandt Village, Wakefield, Woodlawn

Every Neighborhood Must Do Its Part To Solve New York's Affordable Housing Crisis

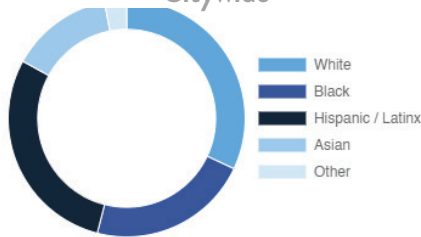
The New York metro area is facing a shortage of 772,000 apartments affordable to very low-income households, nearly 1 million households are rent burdened and more than 68,350 people are homeless in New York City according to the most recent estimate.

Who lives in District 11?

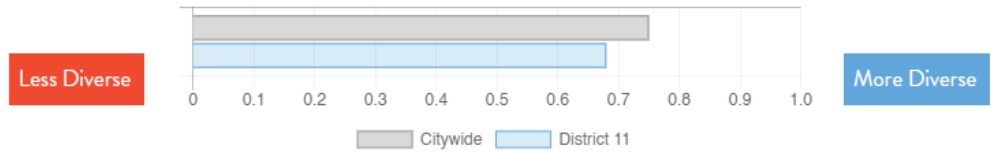
District 11



Citywide



Racial Diversity Index



Demographics	District 11	Citywide
Seniors – 65 And Older	17.7%	14.5%
Families With Children	26.0%	24.8%
Median Household Income	\$62,637	\$63,998
People Living Below Poverty Level	18.2%	17.9%

What are the housing needs in District 11?

Housing Need	District 11	Citywide Avg Per District
Rental Vacancy Rate	3.4%	3.4%
Rent Burdened Households	54.3%	52.5%
Percent Overcrowded	4.8%	3.7%
Code Violations Per 100 Units	14.6	12.1
NYCHA Capital Needs	0	\$787,949,140

Households Entering DHS Homeless Shelters	
Bronx CB 7	979
Bronx CB 8	247
Bronx CB 12	1300

What is the housing stock in District 11?

Housing Stock	District 11	Citywide Avg Per District
NYCHA Units	151	3,243
Section 8 Units	4,008	2,538
Density: PPL Per Acre	33.8	45.8
Percent Homeowners	28.3%	32.7%
Percent Renters	71.7%	67.3%
Rent Regulated Units	37,000	18,980
Units In 1-4 Family Homes	20.6%	38.5%
Units In 5-19 Unit Buildings	6.4%	12.9%
Units In 20+ Unit Buildings	72.6%	48.4%

Housing Production	District 11	Citywide Average
Housing Units In 2013	65,828	67,275
New Housing Units 2014 – 2020	2,246	3,051
Housing Units In 2020	68,074	70,326
Increase From 2013	3.4%	4.5%

ERIC DINOWITZ

NY City Council

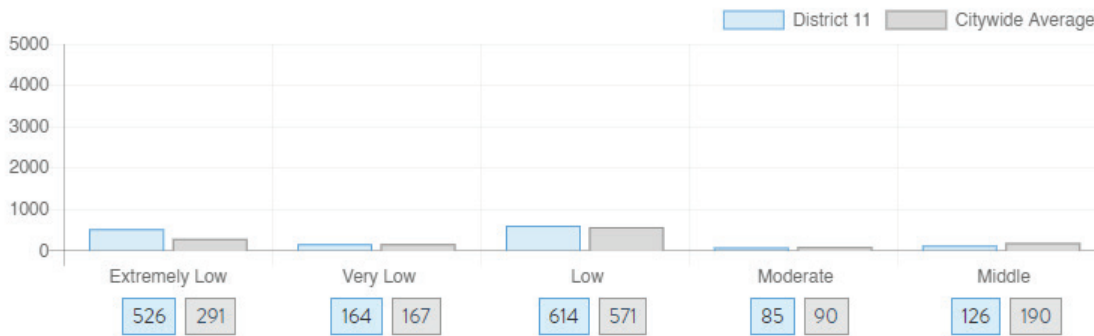
District 11

@EricDinowitz

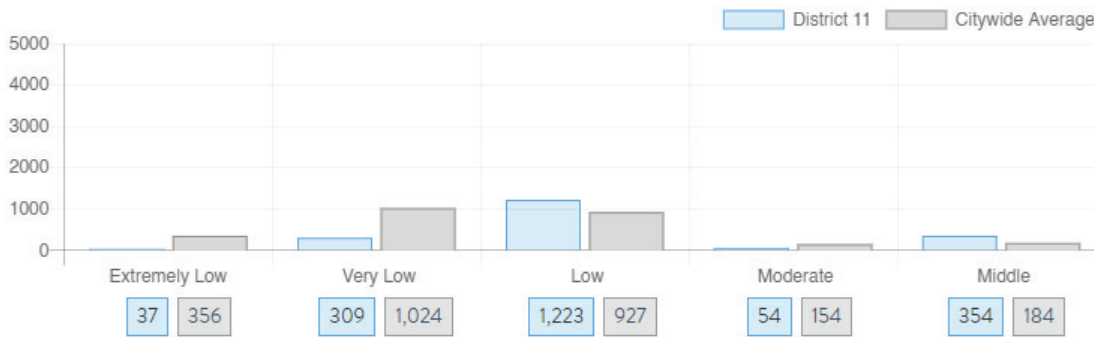
Bedford Park, Kingsbridge, Riverdale, Norwood, Van Cortlandt Village, Wakefield, Woodlawn

What affordable housing is being produced?

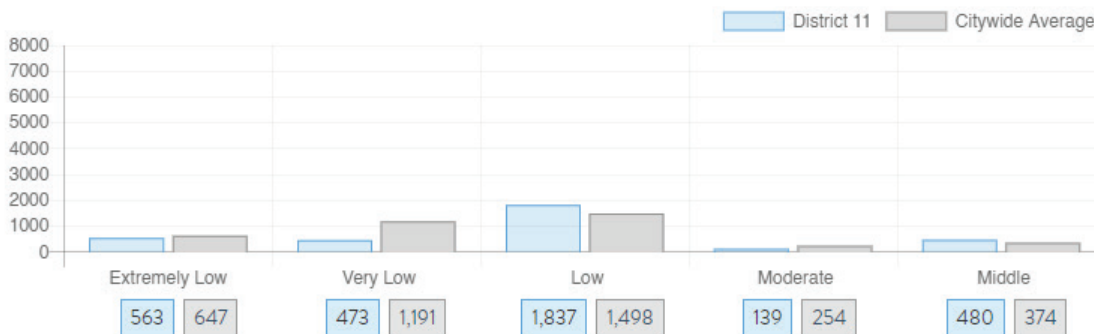
Affordable housing construction in district compared to Citywide average: 2014 - 2021



Affordable housing preserved in district: 2014 - 2021



Total affordable housing production in district: 2014 - 2021



Source: github.com/thenyhcc/citycouncildistricthousingtracker