

SHAUN ABREU

NY City Council

District 7

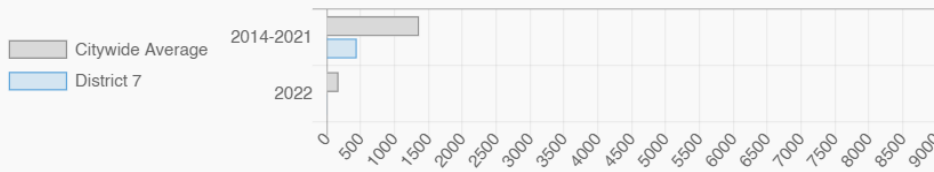
@ShaunAbreu

Manhattan Valley, Manhattanville, Morningside Heights, Hamilton Heights

## Every Neighborhood Must Do Its Part To Solve New York's Affordable Housing Crisis

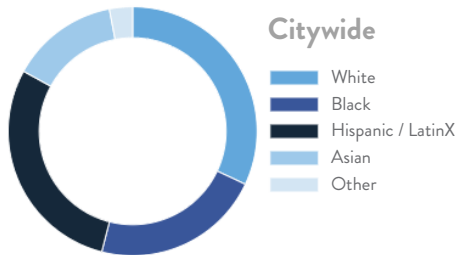
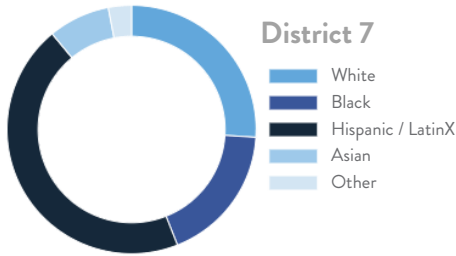
The New York metro area is facing a shortage of 772,000 apartments affordable to very low-income households, nearly 1 million households are rent burdened and more than 68,350 people are homeless in New York City according to the most recent estimate.

### Affordable Housing Construction in District: 2014-2022

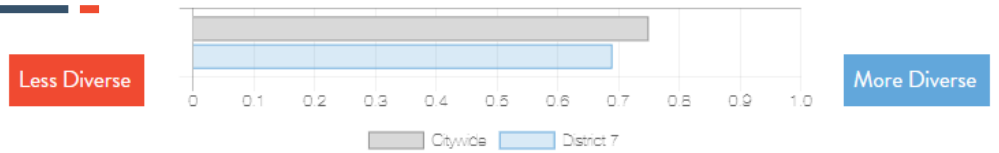


Ranked 34 IN AFFORDABLE HOUSING

### Who lives in District 7?



### Racial Diversity Index



Demographics	District 7	Citywide
Seniors – 65 And Older	15.3%	14.5%
Families With Children	18.30%	24.8%
Median Household Income	\$58,614	\$63,998
People Living Below Poverty Level	22.5%	17.9%

### What is the housing stock in District 7?

Housing Stock	District 7	Citywide   Avg Per District
NYCHA Units	6,094	3,243
Section 8 Units	3,410	2,538
Density: PPL Per Acre	141.1	45.8
Percent Homeowners	15.20%	32.7%
Percent Renters	84.8%	67.3%
Rent Regulated Units	30,000	18,980
Units In 1-4 Family Homes	4.61%	38.5%
Units In 5-19 Unit Buildings	15%	12.9%
Units In 20+ Unit Buildings	79.99%	48.4%

### What are the housing needs in District 7?

Housing Need	District 7	Citywide   Avg Per District
Rental Vacancy Rate	2.7%	3.4%
Rent Burdened Households	49.40%	52.5%
Expiring Affordable Units 2023 – 2027	1,617	1,167
Percent Overcrowded	3.5%	3.7%
Code Violations Per 100 Units	37.3	21.0
NYCHA Capital Needs	\$1,236,159,527	\$787,949,140

Households Entering DHS Homeless Shelters	Value
Manhattan CB 9	298

Housing Production	District 7	Citywide Average
Housing Units In 2021	69,856	70,893
New Housing Units 2022	3	281
Housing Units In 2022	69,859	71,174
Increase In 2022	0.00%	0.39%

SHAUN ABREU

NY City Council

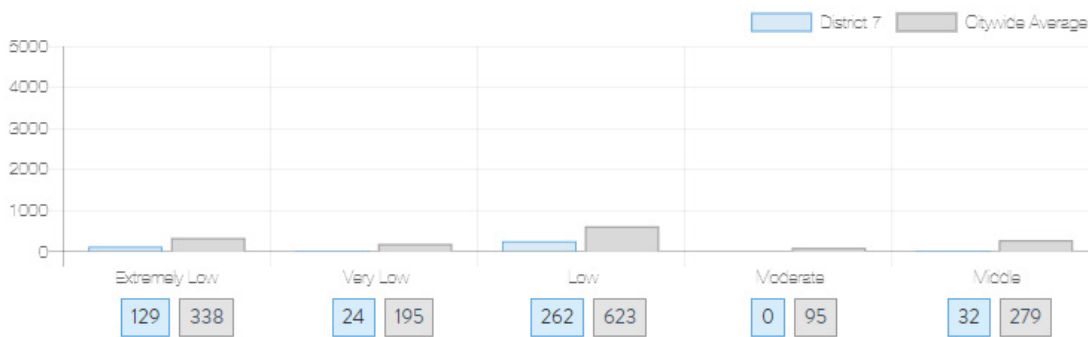
District 7

@ShaunAbreu

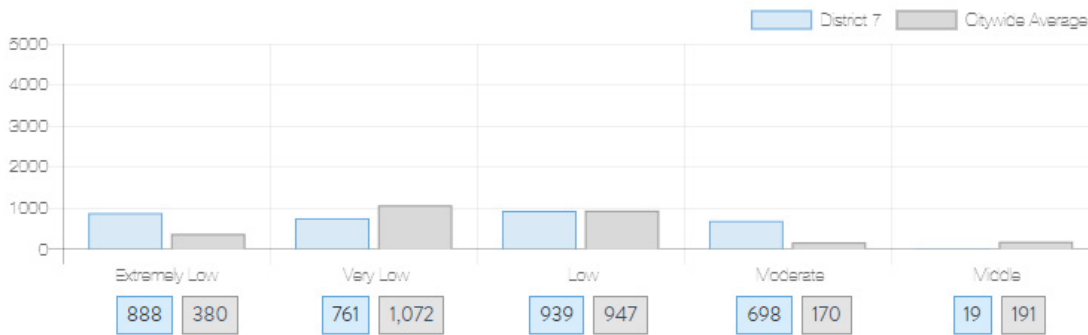
Manhattan Valley, Manhattanville, Morningside Heights, Hamilton Heights

## What affordable housing is being produced?

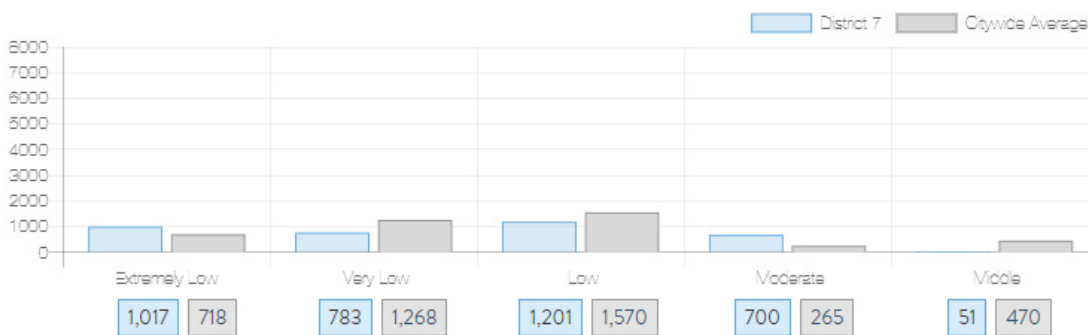
Affordable housing construction in district compared to Citywide average: 2014 - 2022



Affordable housing preserved in district: 2014 - 2022



Total affordable housing production in district: 2014 - 2022



Source: [github.com/thenyhcc/citycouncildistricthousingtracker](https://github.com/thenyhcc/citycouncildistricthousingtracker)