

DAVID CARR

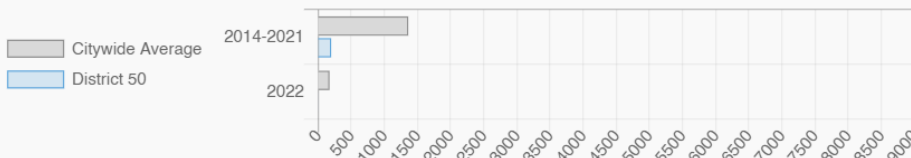
## NY City Council District 50

Arrochar, Bloomfield, Bulls Head, Castleton Corners, Chelsea, Concord, Dongan Hills, Egbertville, Emerson Hill, Fort Wadsworth, Graniteville, Grant City, Grasmere, Heartland Village, Isle of Meadows, Lighthouse Hill, Manor Heights, Meiers Corners, Midland Beach, New Dorp, New Springville, Oakwood, Ocean Breeze, Old Town, Prall's Island, Richmondtown, Rosebank, Shore Acres, South Beach, Todt Hill, Travis, Westerleigh, and Willowbrook

## Every Neighborhood Must Do Its Part To Solve New York's Affordable Housing Crisis

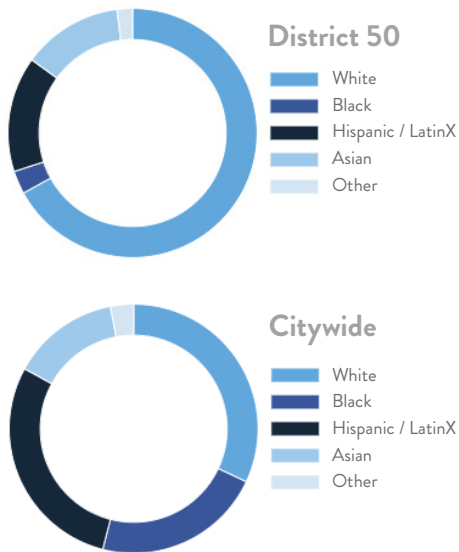
The New York metro area is facing a shortage of 772,000 apartments affordable to very low-income households, nearly 1 million households are rent burdened and more than 68,350 people are homeless in New York City according to the most recent estimate.

### Affordable Housing Construction in District: 2014-2022

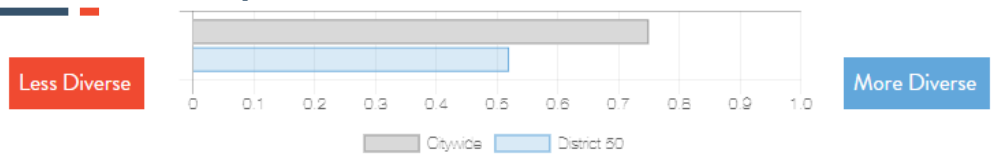


**Ranked 42**  
IN AFFORDABLE HOUSING

### Who lives in District 50?



### Racial Diversity Index



Demographics	District 50	Citywide
Seniors – 65 And Older	17.5%	14.5%
Families With Children	30.5%	24.8%
Median Household Income	\$94,706	\$63,998
People Living Below Poverty Level	10.1%	17.9%

### What is the housing stock in District 50?

Housing Stock	District 50	Citywide   Avg Per District
NYCHA Units	927	3,243
Section 8 Units	502	2,538
Density: PPL Per Acre	12.2	45.8
Percent Homeowners	73.0%	32.7%
Percent Renters	27.0%	67.3%
Rent Regulated Units	2,000	18,980
Units In 1-4 Family Homes	89.6%	38.5%
Units In 5-19 Unit Buildings	2.7%	12.9%
Units In 20+ Unit Buildings	7.6%	48.4%

### What are the housing needs in District 50?

Housing Need	District 50	Citywide   Avg Per District
Rental Vacancy Rate	4.9%	3.4%
Rent Burdened Households	54.0%	52.5%
Expiring Affordable Units 2023 – 2027	0	1,167
Percent Overcrowded	1.3%	3.7%
Code Violations Per 100 Units	2.4	21.0
NYCHA Capital Needs	\$275,071,652	\$787,949,140

Households Entering DHS Homeless Shelters	Value
Staten Island CB 2	43

Housing Production	District 50	Citywide Average
Housing Units In 2021	61,069	70,893
New Housing Units 2022	33	281
Housing Units In 2022	61,102	71,174
Increase In 2022	0.05%	0.39%

DAVID CARR

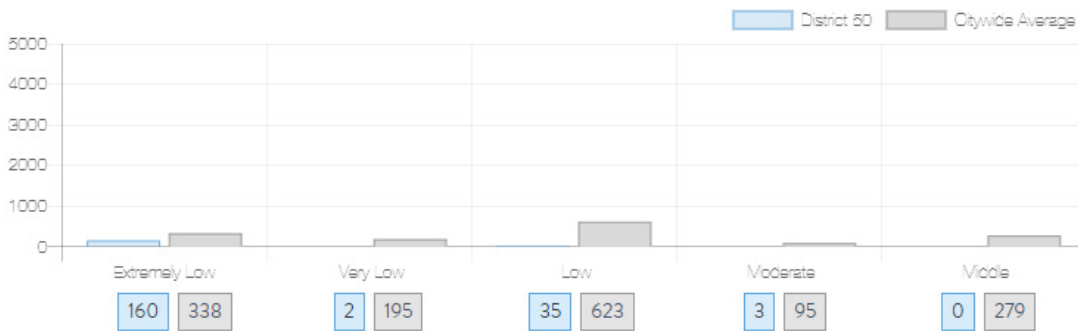
NY City Council District 50

Arrochar, Bloomfield, Bulls Head, Castleton Corners, Chelsea, Concord, Dongan Hills, Egbertville, Emerson Hill, Fort Wadsworth, Graniteville, Grant City, Grasmere, Heartland Village, Isle of Meadows, Lighthouse Hill, Manor Heights, Meiers Corners, Midland Beach, New Dorp, New Springville, Oakwood, Ocean Breeze, Old Town, Prall's Island, Richmondtown, Rosebank, Shore Acres, South Beach, Todt Hill, Travis, Westerleigh, and Willowbrook

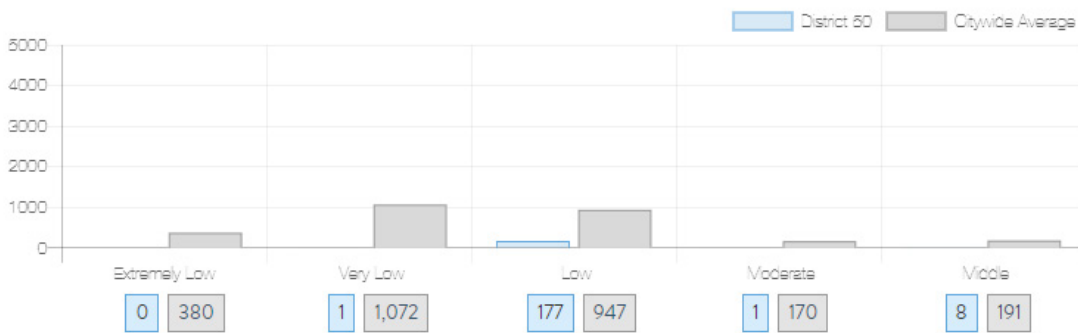


What affordable housing is being produced?

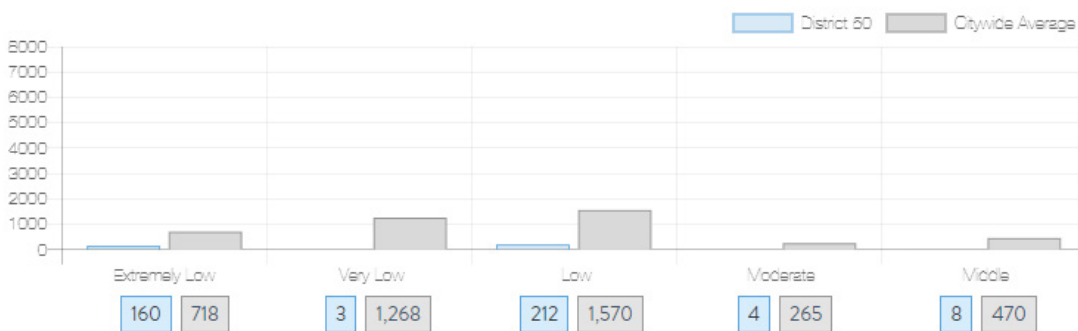
Affordable housing construction in district compared to Citywide average: 2014 - 2022



Affordable housing preserved in district: 2014 - 2022



Total affordable housing production in district: 2014 - 2022



Source: [github.com/thenyhccitycouncildistricthousingtracker](https://github.com/thenyhccitycouncildistricthousingtracker)