

JULIE MENIN

NY City Council

District 5

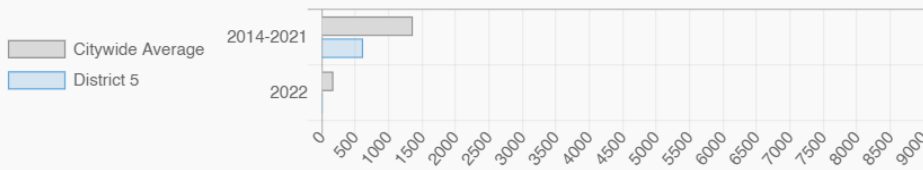
@JulieMenin

Upper East Side's Yorkville, Lenox Hill, Carnegie Hill, Roosevelt Island, Midtown East, Sutton Place, El Barrio in East Harlem

## Every Neighborhood Must Do Its Part To Solve New York's Affordable Housing Crisis

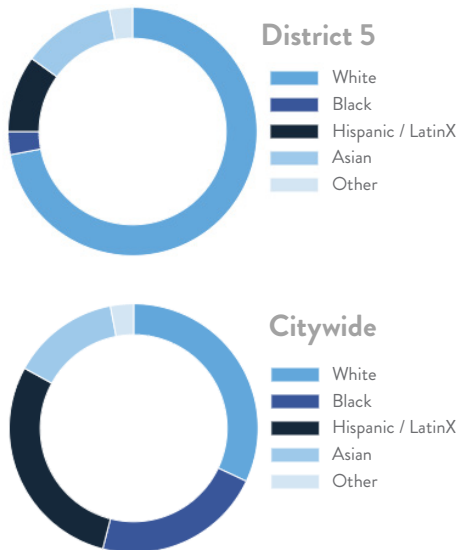
The New York metro area is facing a shortage of 772,000 apartments affordable to very low-income households, nearly 1 million households are rent burdened and more than 68,350 people are homeless in New York City according to the most recent estimate.

### Affordable Housing Construction in District: 2014-2022

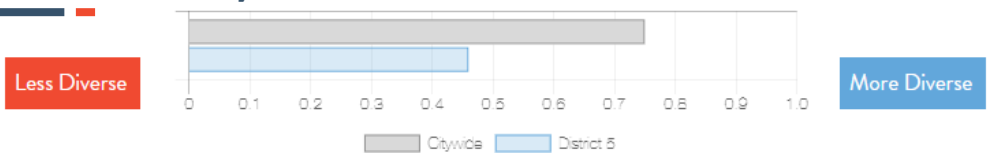


Ranked 30 IN AFFORDABLE HOUSING

### Who lives in District 5?



### Racial Diversity Index



Demographics	District 5	Citywide
Seniors – 65 And Older	19.5%	14.5%
Families With Children	16.0%	24.8%
Median Household Income	\$130,082	\$63,998
People Living Below Poverty Level	5.7%	17.9%

### What is the housing stock in District 5?

Housing Stock	District 5	Citywide   Avg Per District
NYCHA Units	1,769	3,243
Section 8 Units	905	2,538
Density: PPL Per Acre	196.5	45.8
Percent Homeowners	30.1%	32.7%
Percent Renters	69.9%	67.3%
Rent Regulated Units	20,000	18,980
Units In 1-4 Family Homes	3.3%	38.5%
Units In 5-19 Unit Buildings	14.2%	12.9%
Units In 20+ Unit Buildings	82.5%	48.4%

### What are the housing needs in District 5?

Housing Need	District 5	Citywide   Avg Per District
Rental Vacancy Rate	5.8%	3.4%
Rent Burdened Households	40.5%	52.5%
Expiring Affordable Units 2023 – 2027	9,902	1,167
Percent Overcrowded	2.7%	3.7%
Code Violations Per 100 Units	5.3	21.0
NYCHA Capital Needs	\$383,687,780	\$787,949,140

Households Entering DHS Homeless Shelters		
Manhattan CB 8		56

Housing Production	District 5	Citywide Average
Housing Units In 2021	106,075	70,893
New Housing Units 2022	4	281
Housing Units In 2022	106,079	71,174
Increase In 2022	0.00%	0.39%

JULIE MENIN

NY City Council

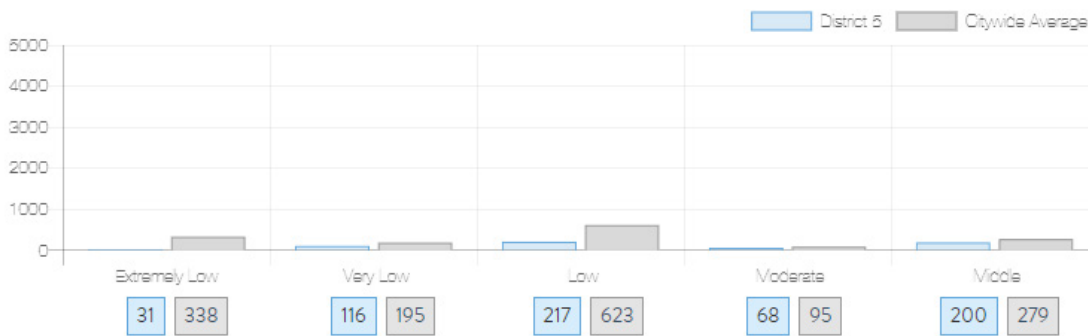
District 5

@JulieMenin

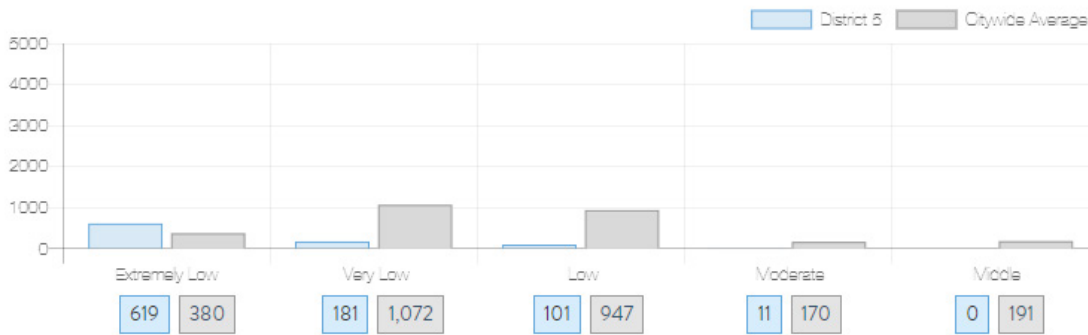
Upper East Side's Yorkville, Lenox Hill, Carnegie Hill, Roosevelt Island, Midtown East, Sutton Place, El Barrio in East Harlem

## What affordable housing is being produced?

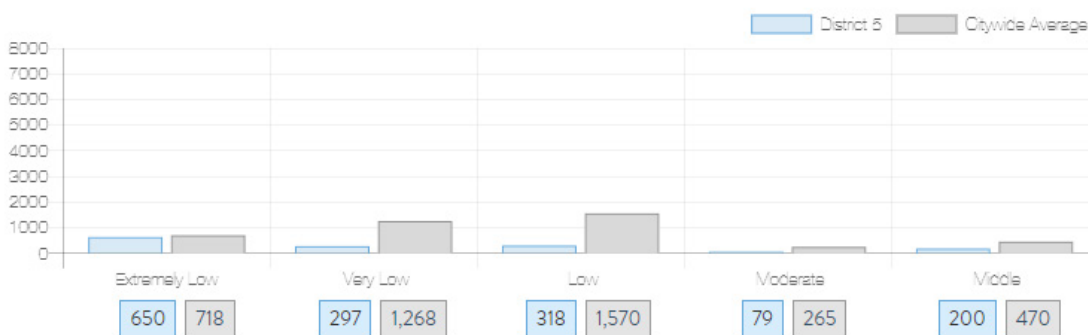
Affordable housing construction in district compared to Citywide average: 2014 - 2022



Affordable housing preserved in district: 2014 - 2022



Total affordable housing production in district: 2014 - 2022



Source: [github.com/thenyhcc/citycouncildistricthousingtracker](https://github.com/thenyhcc/citycouncildistricthousingtracker)