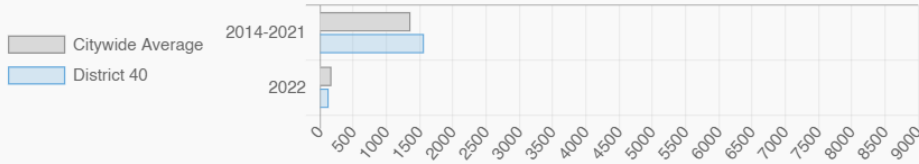


RITA JOSEPH

NY City Council District 40

Crown Heights, East Flatbush, Flatbush, Kensington, Midwood, Prospect Park, and Prospect Lefferts Gardens

Affordable Housing Construction in District: 2014-2022



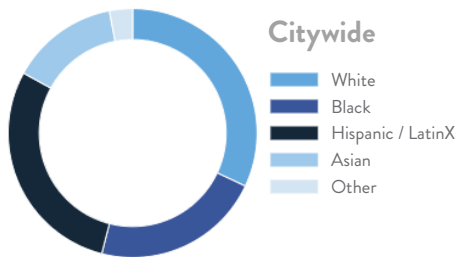
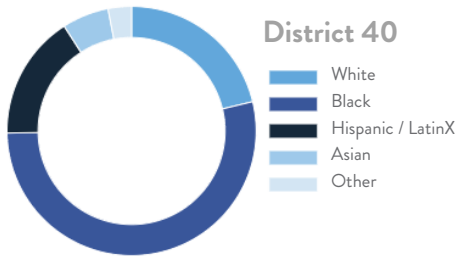
Every Neighborhood Must Do Its Part To Solve New York's Affordable Housing Crisis

The New York metro area is facing a shortage of 772,000 apartments affordable to very low-income households, nearly 1 million households are rent burdened and more than 68,350 people are homeless in New York City according to the most recent estimate.

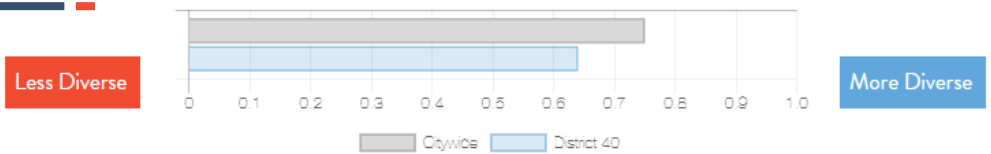


Ranked 18 IN AFFORDABLE HOUSING

Who lives in District 40?



Racial Diversity Index



Demographics	District 40	Citywide
Seniors – 65 And Older	12.4%	14.5%
Families With Children	23.6%	24.8%
Median Household Income	\$64,835	\$63,998
People Living Below Poverty Level	17.0%	17.9%

What are the housing needs in District 40?

Housing Need	District 40	Citywide Avg Per District
Rental Vacancy Rate	3.4%	3.4%
Rent Burdened Households	52.5%	52.5%
Expiring Affordable Units 2023 – 2027	894	1,167
Percent Overcrowded	5.4%	3.7%
Code Violations Per 100 Units	51.8	21.0
NYCHA Capital Needs	\$10,127,367	\$787,949,140

Households Entering DHS Homeless Shelters	
Brooklyn CB 9	379
Brooklyn CB 14	273
Brooklyn CB 17	682

What is the housing stock in District 40?

Housing Stock	District 40	Citywide Avg Per District
NYCHA Units	12	3,243
Section 8 Units	1,592	2,538
Density: PPL Per Acre	109.4	45.8
Percent Homeowners	16.0%	32.7%
Percent Renters	84.0%	67.3%
Rent Regulated Units	32,000	18,980
Units In 1-4 Family Homes	21.9%	38.5%
Units In 5-19 Unit Buildings	12.3%	12.9%
Units In 20+ Unit Buildings	65.7%	48.4%

Housing Production	District 40	Citywide Average
Housing Units In 2021	64,204	70,893
New Housing Units 2022	412	281
Housing Units In 2022	64,616	71,174
Increase In 2022	0.64%	0.39%

RITA JOSEPH

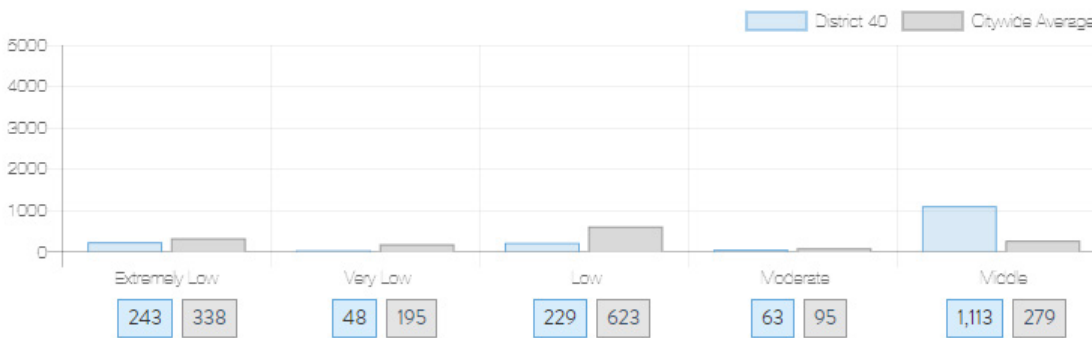
NY City Council
District 40

Crown Heights, East Flatbush, Flatbush, Kensington, Midwood, Prospect Park, and Prospect Lefferts Gardens

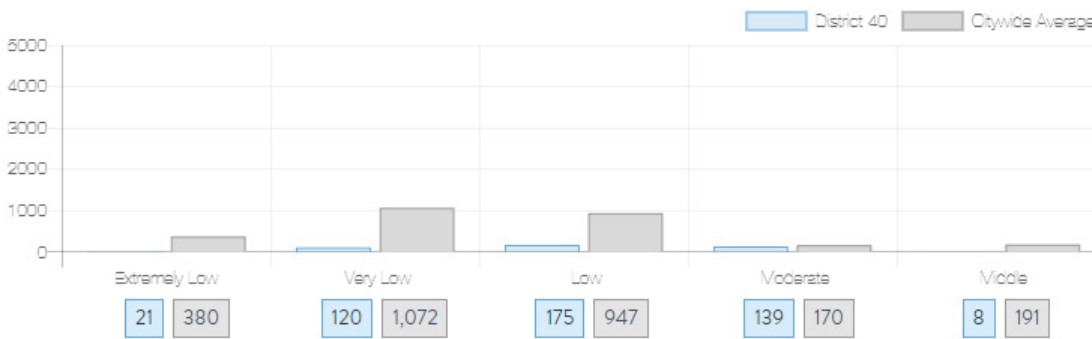


What affordable housing is being produced?

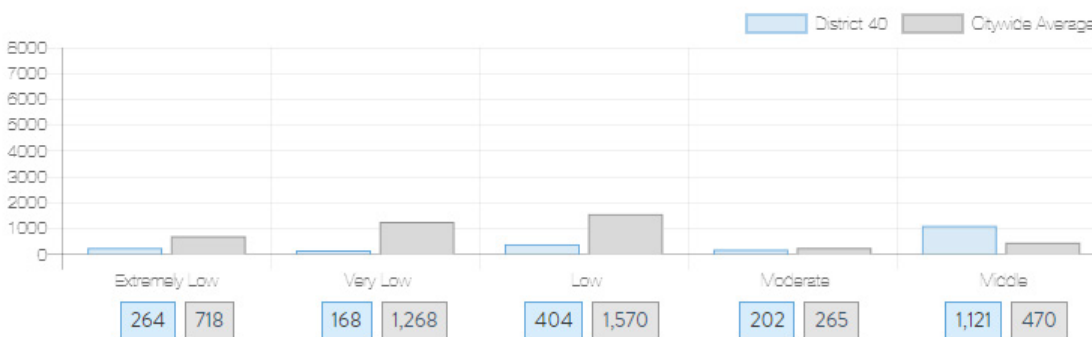
Affordable housing construction in district compared to Citywide average: 2014 - 2022



Affordable housing preserved in district: 2014 - 2022



Total affordable housing production in district: 2014 - 2022



Source: github.com/thenyhcc/citycouncildistricthousingtracker