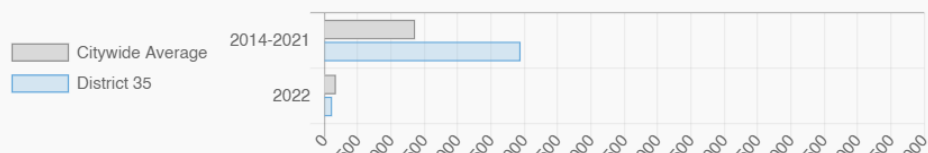


CRYSTAL HUDSON

NY City Council District 35

Fort Greene, Clinton Hill, Crown Heights, Prospect Heights, Bedford Stuyvesant

Affordable Housing Construction in District: 2014-2022



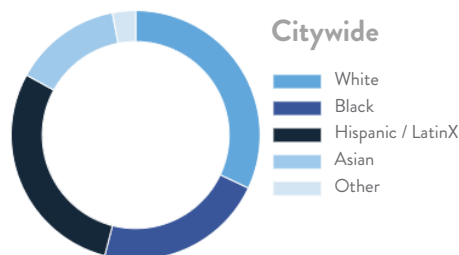
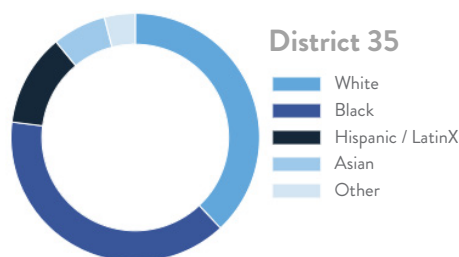
Every Neighborhood Must Do Its Part To Solve New York's Affordable Housing Crisis

The New York metro area is facing a shortage of 772,000 apartments affordable to very low-income households, nearly 1 million households are rent burdened and more than 68,350 people are homeless in New York City according to the most recent estimate.

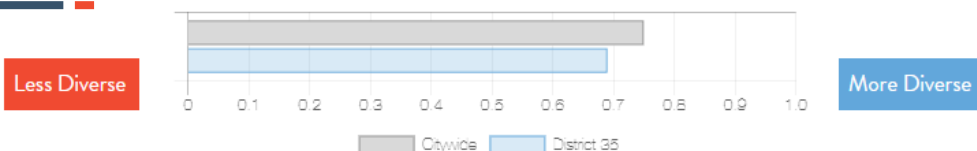


Ranked 8
IN AFFORDABLE
HOUSING

Who lives in District 35?



Racial Diversity Index



Demographics

	District 35	Citywide
Seniors – 65 And Older	12.2%	14.5%
Families With Children	20.4%	24.8%
Median Household Income	\$80,626	\$63,998
People Living Below Poverty Level	16.6%	17.9%

What is the housing stock in District 35?

Housing Stock	District 35	Citywide Avg Per District
NYCHA Units	6,045	3,243
Section 8 Units	1,769	2,538
Density: PPL Per Acre	93.8	45.8
Percent Homeowners	23.7%	32.7%
Percent Renters	76.3%	67.3%
Rent Regulated Units	22,000	18,980
Units In 1-4 Family Homes	29.2%	38.5%
Units In 5-19 Unit Buildings	20.7%	12.9%
Units In 20+ Unit Buildings	49.9%	48.4%

Housing Production	District 35	Citywide Average
Housing Units In 2021	82,565	70,893
New Housing Units 2022	87	281
Housing Units In 2022	82,652	71,174
Increase In 2022	0.11%	0.39%

What are the housing needs in District 35?

Housing Need	District 35	Citywide Avg Per District
Rental Vacancy Rate	3.2%	3.4%
Rent Burdened Households	43.4%	52.5%
Expiring Affordable Units 2023 – 2027	1,998	1,167
Percent Overcrowded	2.5%	3.7%
Code Violations Per 100 Units	27.3	21.0
NYCHA Capital Needs	\$1,528,898,860	\$787,949,140

Households Entering DHS Homeless Shelters

Brooklyn CB 2	256
Brooklyn CB 8	389
Brooklyn CB 9	379

CRYSTAL HUDSON

NY City Council

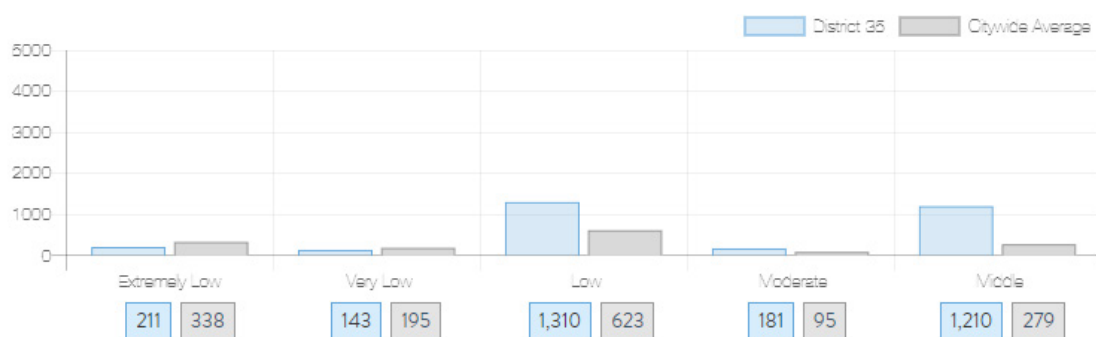
District 35

Fort Greene, Clinton Hill, Crown Heights, Prospect Heights, Bedford Stuyvesant

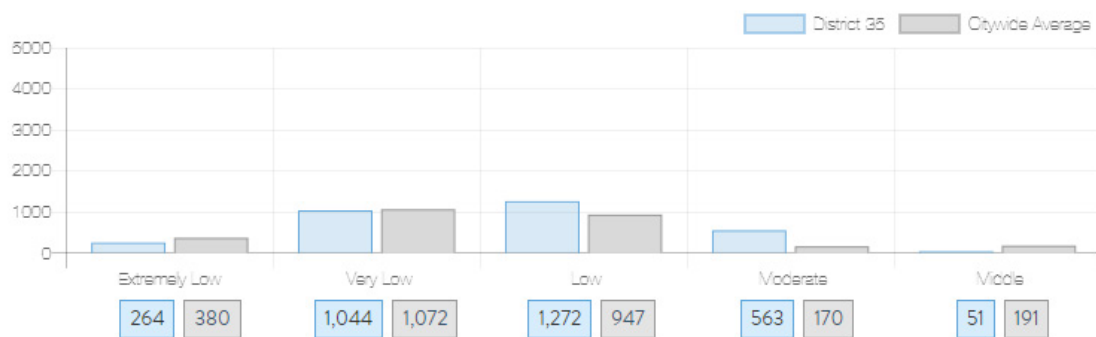
NYC
HOUSING TRACKER

What affordable housing is being produced?

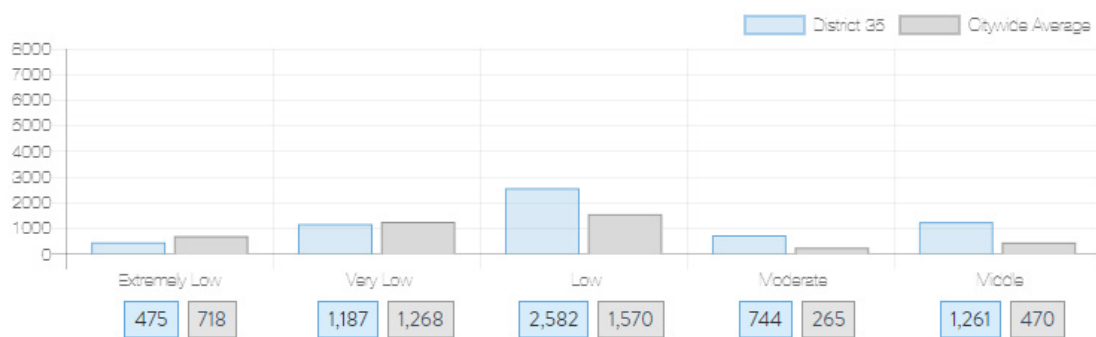
Affordable housing construction in district compared to Citywide average: 2014 - 2022



Affordable housing preserved in district: 2014 - 2022



Total affordable housing production in district: 2014 - 2022



Source: github.com/thenyhccitycouncil/districthousingtracker