

JOANN ARIOLA

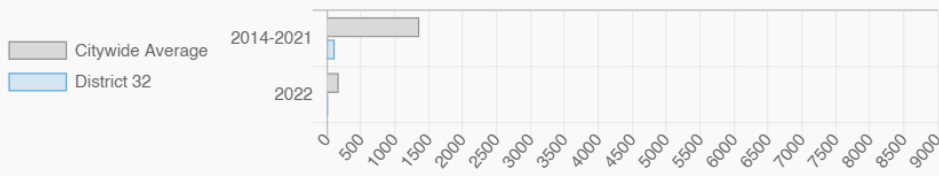
NY City Council District 32

Belle Harbor, Breezy Point, Broad Channel, Howard Beach, Lindenwood, Neponsit, Ozone Park, Richmond Hill, Rockaway Park, Roxbury, South Ozone Park, West Hamilton Beach, Woodhaven

Every Neighborhood Must Do Its Part To Solve New York's Affordable Housing Crisis

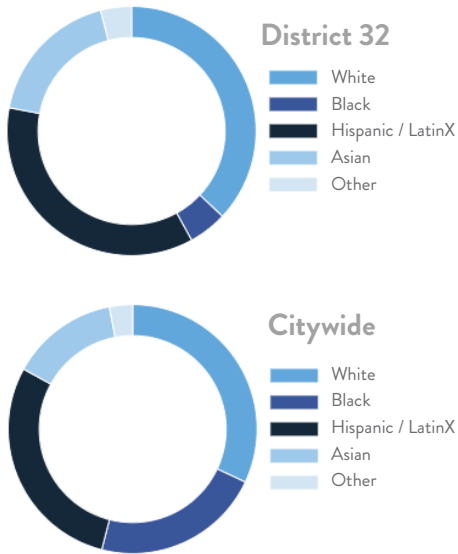
The New York metro area is facing a shortage of 772,000 apartments affordable to very low-income households, nearly 1 million households are rent burdened and more than 68,350 people are homeless in New York City according to the most recent estimate.

Affordable Housing Construction in District: 2014-2022

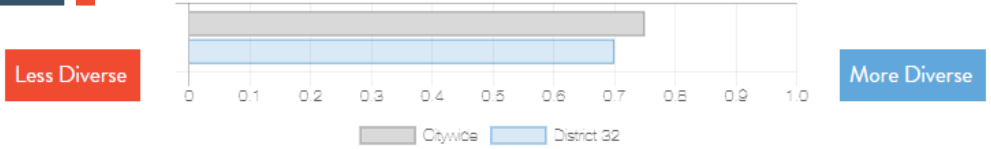


Ranked 44 IN AFFORDABLE HOUSING

Who lives in District 32?



Racial Diversity Index



Demographics	District 32	Citywide
Seniors – 65 And Older	16.0%	14.5%
Families With Children	28.5%	24.8%
Median Household Income	\$83,394	\$63,998
People Living Below Poverty Level	11.3%	17.9%

What are the housing needs in District 32?

Housing Need	District 32	Citywide Avg Per District
Rental Vacancy Rate	2.6%	3.4%
Rent Burdened Households	54.8%	52.5%
Expiring Affordable Units 2023 – 2027	24	1,167
Percent Overcrowded	1.6%	3.7%
Code Violations Per 100 Units	8.6	21.0
NYCHA Capital Needs	0	\$787,949,140

Households Entering DHS Homeless Shelters	
Queens CB 9	138
Queens CB 10	81
Queens CB 14	375

What is the housing stock in District 32?

Housing Stock	District 32	Citywide Avg Per District
NYCHA Units	-	3,243
Section 8 Units	807	2,538
Density: PPL Per Acre	26.0	45.8
Percent Homeowners	58.7%	32.7%
Percent Renters	41.3%	67.3%
Rent Regulated Units	7,000	18,980
Units In 1-4 Family Homes	79.0%	38.5%
Units In 5-19 Unit Buildings	4.2%	12.9%
Units In 20+ Unit Buildings	16.4%	48.4%

Housing Production	District 32	Citywide Average
Housing Units In 2021	59,794	70,893
New Housing Units 2022	55	281
Housing Units In 2022	59,849	71,174
Increase In 2022	0.09%	0.39%

JOANN ARIOLA

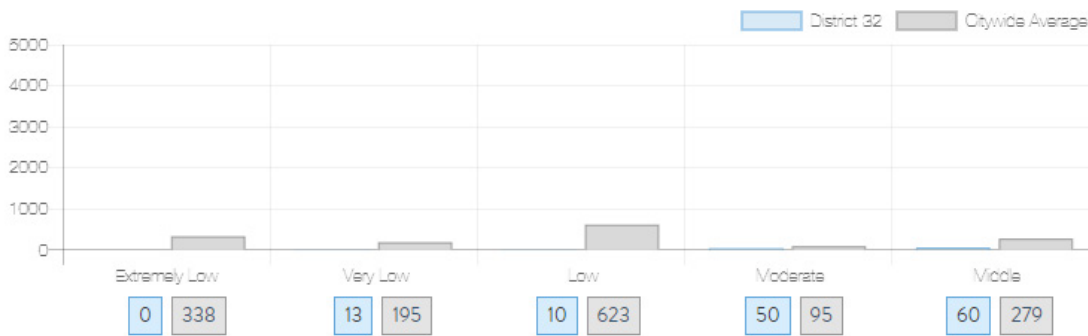
NY City Council
District 32

Belle Harbor, Breezy Point, Broad Channel, Howard Beach, Lindenwood, Neponsit, Ozone Park, Richmond Hill, Rockaway Park, Roxbury, South Ozone Park, West Hamilton Beach, Woodhaven

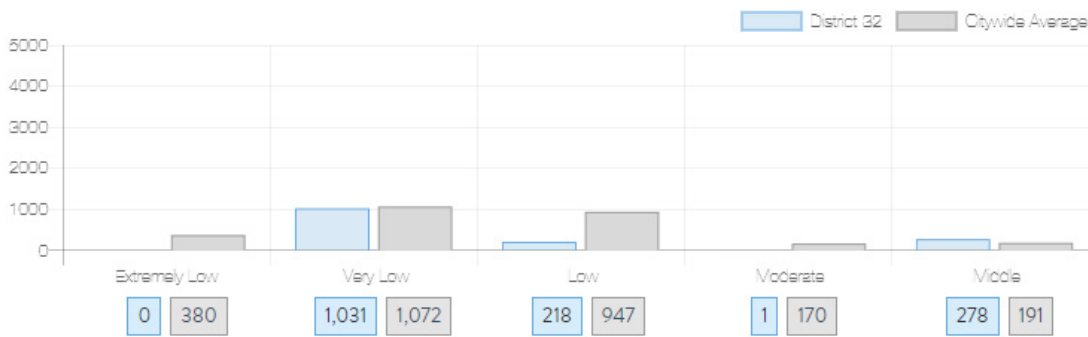


What affordable housing is being produced?

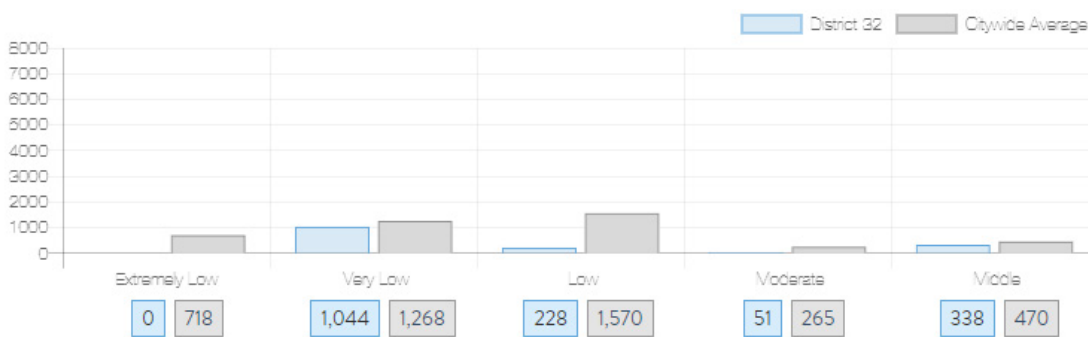
Affordable housing construction in district compared to Citywide average: 2014 - 2022



Affordable housing preserved in district: 2014 - 2022



Total affordable housing production in district: 2014 - 2022



Source: github.com/thenyhcc/citycouncildistricthousingtracker