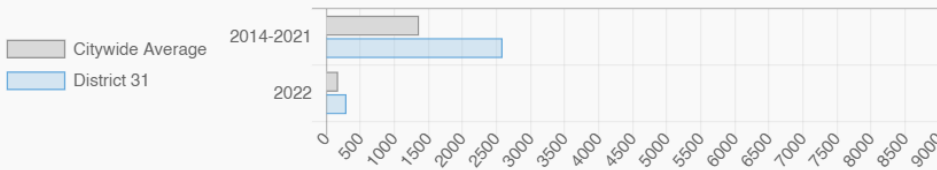


SELVENA N. BROOKS-POWERS

NY City Council District 31

Arverne, Brookville, Edgemere, Far Rockaway, Laurelton, Rosedale, Springfield Gardens

Affordable Housing Construction in District: 2014-2022



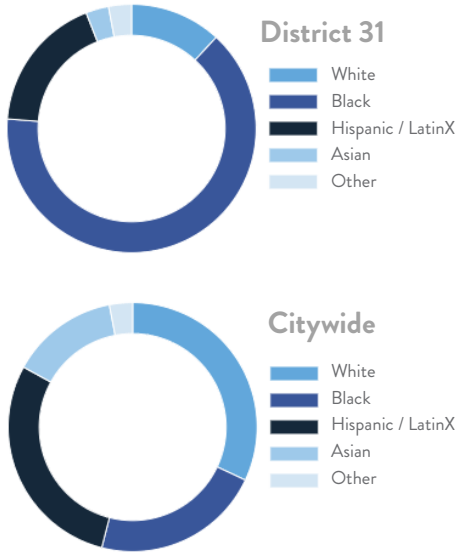
Every Neighborhood Must Do Its Part To Solve New York's Affordable Housing Crisis

The New York metro area is facing a shortage of 772,000 apartments affordable to very low-income households, nearly 1 million households are rent burdened and more than 68,350 people are homeless in New York City according to the most recent estimate.

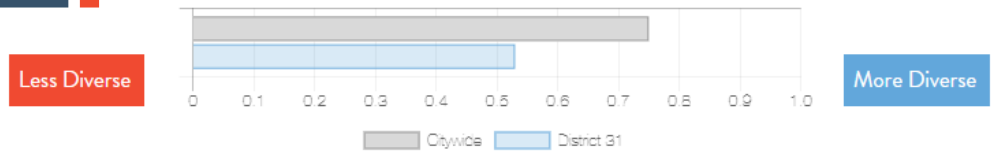


Ranked 9 IN AFFORDABLE HOUSING

Who lives in District 31?



Racial Diversity Index



Demographics	District 31	Citywide
Seniors – 65 And Older	14.2%	14.5%
Families With Children	31.7%	24.8%
Median Household Income	\$72,213	\$63,998
People Living Below Poverty Level	14.6%	17.9%

What are the housing needs in District 31?

Housing Need	District 31	Citywide   Avg Per District
Rental Vacancy Rate	2.7%	3.4%
Rent Burdened Households	49.1%	52.5%
Expiring Affordable Units 2023 – 2027	336	1,167
Percent Overcrowded	2.2%	3.7%
Code Violations Per 100 Units	17.8	21.0
NYCHA Capital Needs	\$689,937,082	\$787,949,140

Households Entering DHS Homeless Shelters	
Queens CB 13	252
Queens CB 14	375

What is the housing stock in District 31?

Housing Stock	District 31	Citywide   Avg Per District
NYCHA Units	2,598	3,243
Section 8 Units	4,772	2,538
Density: PPL Per Acre	22.2	45.8
Percent Homeowners	45.7%	32.7%
Percent Renters	54.3%	67.3%
Rent Regulated Units	8,000	18,980
Units In 1-4 Family Homes	70.5%	38.5%
Units In 5-19 Unit Buildings	3.3%	12.9%
Units In 20+ Unit Buildings	26.0%	48.4%

Housing Production	District 31	Citywide Average
Housing Units In 2021	55,831	70,893
New Housing Units 2022	1,294	281
Housing Units In 2022	57,125	71,174
Increase In 2022	2.27%	0.39%

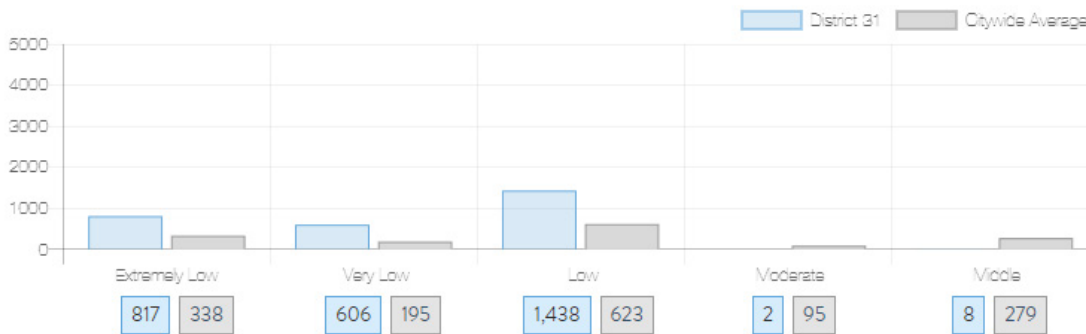
SELVENA N. BROOKS-POWERS

NY City Council  
District 31

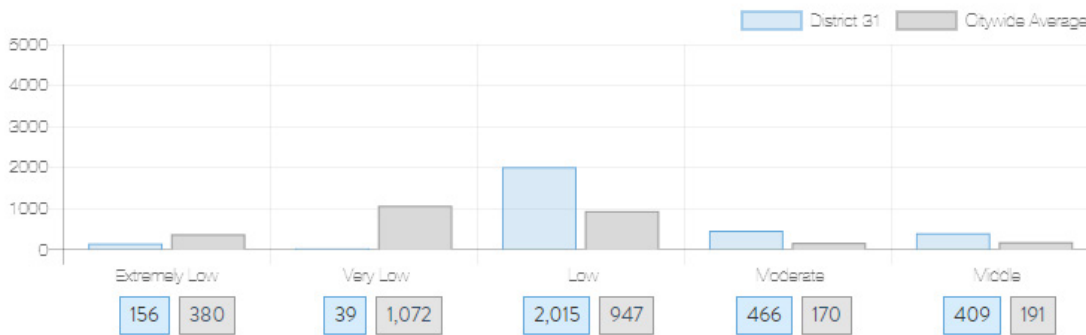
Arverne, Brookville, Edgemere, Far Rockaway, Laurelton, Rosedale, Springfield Gardens

## What affordable housing is being produced?

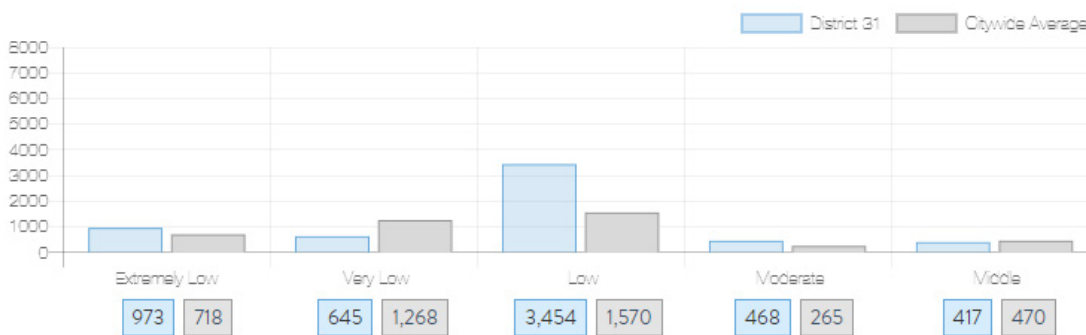
Affordable housing construction in district compared to Citywide average: 2014 - 2022



Affordable housing preserved in district: 2014 - 2022



Total affordable housing production in district: 2014 - 2022



Source: [github.com/thenyhccitycouncil/districthousingtracker](https://github.com/thenyhccitycouncil/districthousingtracker)