

ROBERT HOLDEN

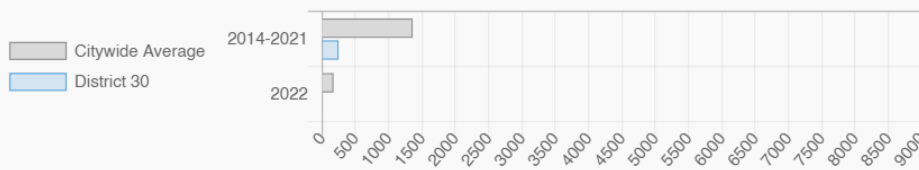
NY City Council District 30

Glendale, Maspeth, Middle Village, Ridgewood, Woodhaven, Woodside

Every Neighborhood Must Do Its Part To Solve New York's Affordable Housing Crisis

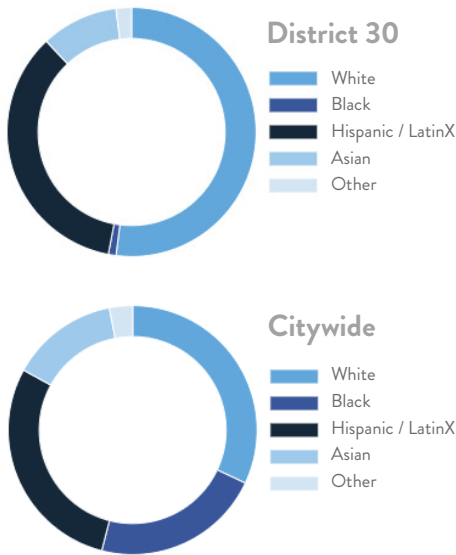
The New York metro area is facing a shortage of 772,000 apartments affordable to very low-income households, nearly 1 million households are rent burdened and more than 68,350 people are homeless in New York City according to the most recent estimate.

Affordable Housing Construction in District: 2014-2022

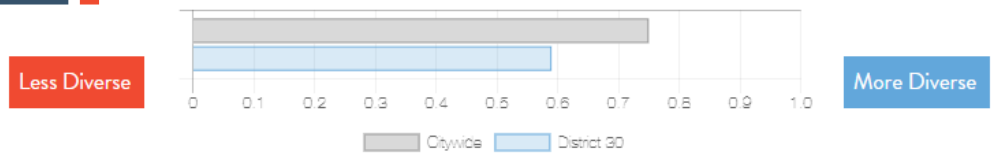


Ranked 38 IN AFFORDABLE HOUSING

Who lives in District 30?



Racial Diversity Index



Demographics	District 30	Citywide
Seniors – 65 And Older	13.3%	14.5%
Families With Children	31.3%	24.8%
Median Household Income	\$84,498	\$63,998
People Living Below Poverty Level	8.9%	17.9%

What are the housing needs in District 30?

Housing Need	District 30	Citywide Avg Per District
Rental Vacancy Rate	3.5%	3.4%
Rent Burdened Households	49.5%	52.5%
Expiring Affordable Units 2023 – 2027	8	1,167
Percent Overcrowded	1.5%	3.7%
Code Violations Per 100 Units	9.3	21.0
NYCHA Capital Needs	0	\$787,949,140

Households Entering DHS Homeless Shelters		
Queens CB 2		148
Queens CB 5		160

What is the housing stock in District 30?

Housing Stock	District 30	Citywide Avg Per District
NYCHA Units	-	3,243
Section 8 Units	280	2,538
Density: PPL Per Acre	28.6	45.8
Percent Homeowners	47.7%	32.7%
Percent Renters	52.3%	67.3%
Rent Regulated Units	14,000	18,980
Units In 1-4 Family Homes	85.5%	38.5%
Units In 5-19 Unit Buildings	8.7%	12.9%
Units In 20+ Unit Buildings	5.7%	48.4%

Housing Production	District 30	Citywide Average
Housing Units In 2021	61,315	70,893
New Housing Units 2022	165	281
Housing Units In 2022	61,480	71,174
Increase In 2022	0.27%	0.39%

ROBERT HOLDEN

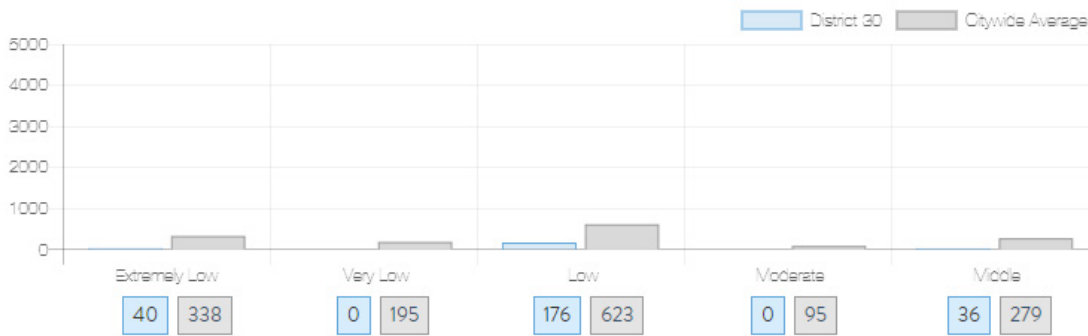
NY City Council
District 30

Glendale, Maspeth, Middle Village, Ridgewood, Woodhaven, Woodside

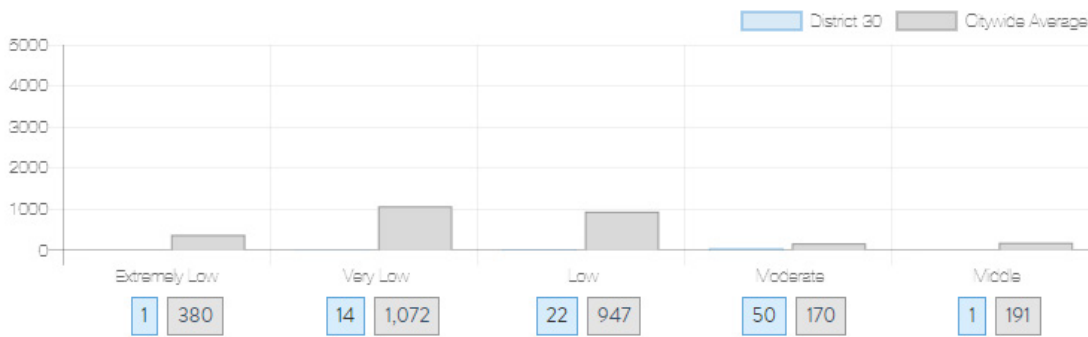


What affordable housing is being produced?

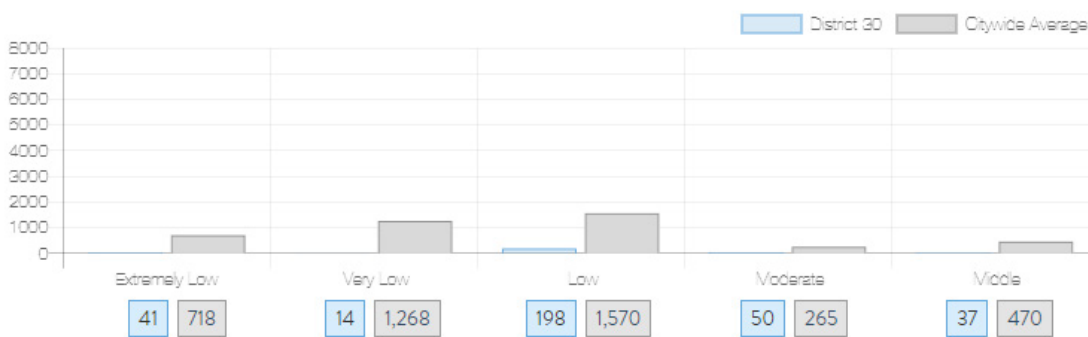
Affordable housing construction in district compared to Citywide average: 2014 - 2022



Affordable housing preserved in district: 2014 - 2022



Total affordable housing production in district: 2014 - 2022



Source: github.com/thenyhccitycouncil/districthousingtracker