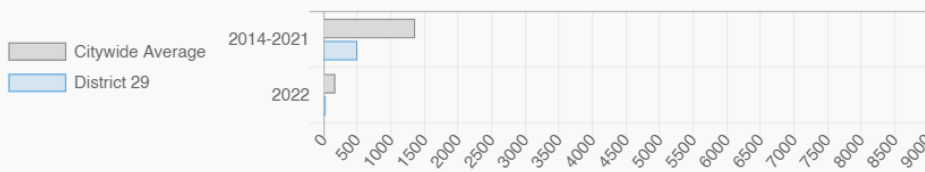


LYNN SCHULMAN

NY City Council District 29

Rego Park, Forest Hills, Kew Gardens, Richmond Hill

Affordable Housing Construction in District: 2014-2022



Every Neighborhood Must Do Its Part To Solve New York's Affordable Housing Crisis

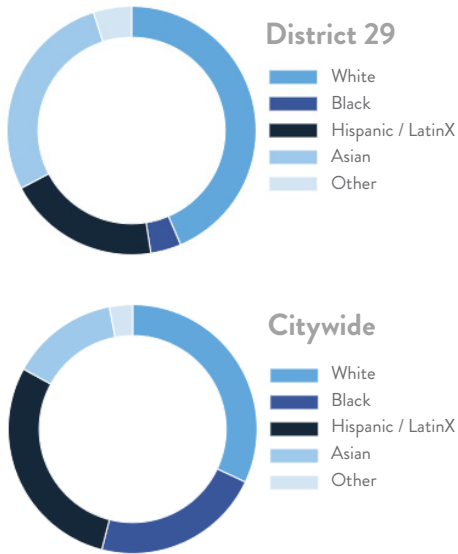
The New York metro area is facing a shortage of 772,000 apartments affordable to very low-income households, nearly 1 million households are rent burdened and more than 68,350 people are homeless in New York City according to the most recent estimate.



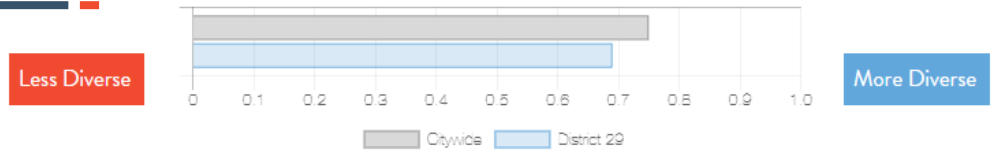
Ranked 31

IN AFFORDABLE HOUSING

Who lives in District 29?



Racial Diversity Index



Demographics	District 29	Citywide
Seniors – 65 And Older	18.9%	14.5%
Families With Children	21.7%	24.8%
Median Household Income	\$83,297	\$63,998
People Living Below Poverty Level	11.3%	17.9%

What are the housing needs in District 29?

Housing Need	District 29	Citywide   Avg Per District
Rental Vacancy Rate	3.0%	3.4%
Rent Burdened Households	49.6%	52.5%
Expiring Affordable Units 2023 – 2027	168	1,167
Percent Overcrowded	4.3%	3.7%
Code Violations Per 100 Units	7.2	21.0
NYCHA Capital Needs	0	\$787,949,140

Households Entering DHS Homeless Shelters	
Queens CB 6	30
Queens CB 9	138

What is the housing stock in District 29?

Housing Stock	District 29	Citywide   Avg Per District
NYCHA Units	–	3,243
Section 8 Units	694	2,538
Density: PPL Per Acre	58.6	45.8
Percent Homeowners	44.6%	32.7%
Percent Renters	55.4%	67.3%
Rent Regulated Units	21,000	18,980
Units In 1-4 Family Homes	25.6%	38.5%
Units In 5-19 Unit Buildings	4.4%	12.9%
Units In 20+ Unit Buildings	69.8%	48.4%

Housing Production	District 29	Citywide Average
Housing Units In 2021	73,937	70,893
New Housing Units 2022	491	281
Housing Units In 2022	74,428	71,174
Increase In 2022	0.66%	0.39%

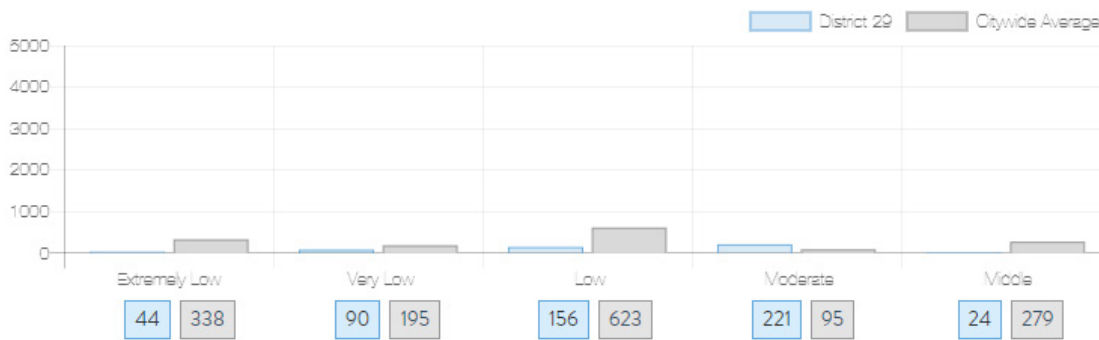
LYNN SCHULMAN

NY City Council  
District 29

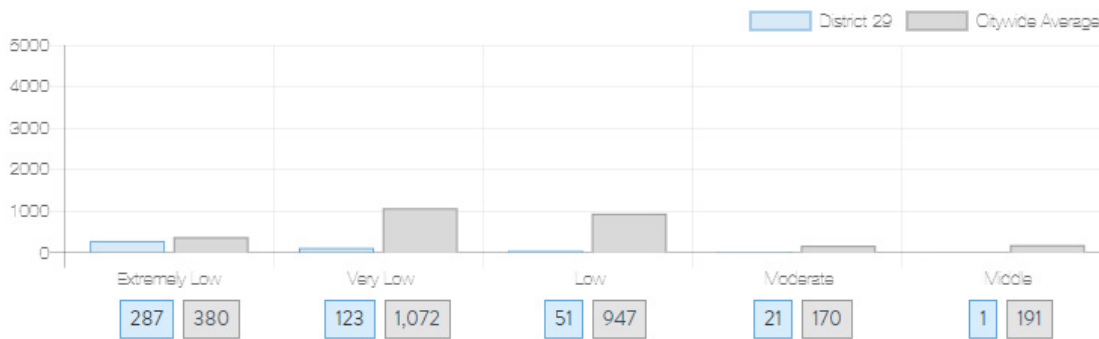
Rego Park, Forest Hills, Kew Gardens, Richmond Hill

## What affordable housing is being produced?

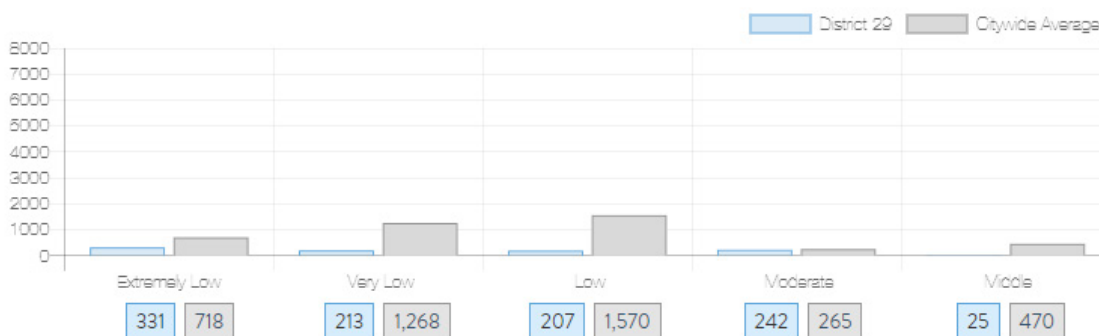
Affordable housing construction in district compared to Citywide average: 2014 - 2022



Affordable housing preserved in district: 2014 - 2022



Total affordable housing production in district: 2014 - 2022



Source: [github.com/thenyhcc/citycouncildistricthousingtracker](https://github.com/thenyhcc/citycouncildistricthousingtracker)