

NANTASHA WILLIAMS

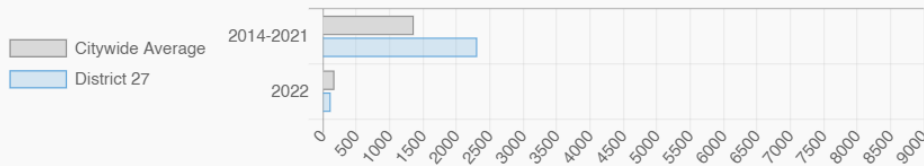
NY City Council District 27

Cambria Heights, Hollis, Jamaica, St. Albans, Queens Village, and Springfield Gardens

Every Neighborhood Must Do Its Part To Solve New York's Affordable Housing Crisis

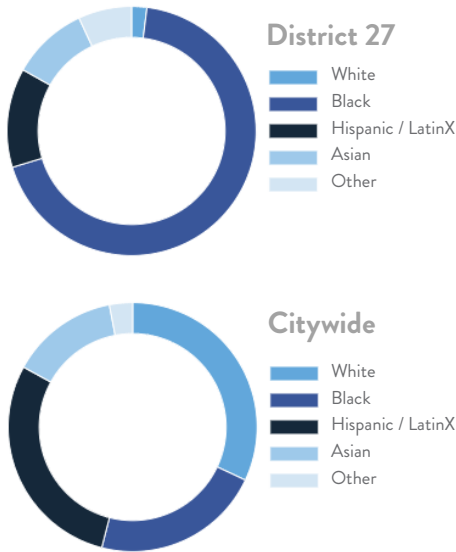
The New York metro area is facing a shortage of 772,000 apartments affordable to very low-income households, nearly 1 million households are rent burdened and more than 68,350 people are homeless in New York City according to the most recent estimate.

Affordable Housing Construction in District: 2014-2022

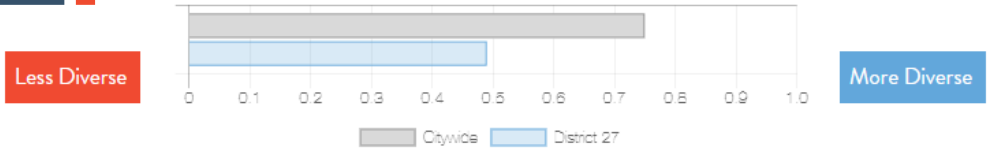


Ranked 13 IN AFFORDABLE HOUSING

Who lives in District 27?



Racial Diversity Index



Demographics	District 27	Citywide
Seniors – 65 And Older	15.4%	14.5%
Families With Children	26.8%	24.8%
Median Household Income	\$82,840	\$63,998
People Living Below Poverty Level	9.5%	17.9%

What are the housing needs in District 27?

Housing Need	District 27	Citywide Avg Per District
Rental Vacancy Rate	3.6%	3.4%
Rent Burdened Households	59.8%	52.5%
Expiring Affordable Units 2023 – 2027	145	1,167
Percent Overcrowded	2.7%	3.7%
Code Violations Per 100 Units	10.6	21.0
NYCHA Capital Needs	\$79,196,727	\$787,949,140

Households Entering DHS Homeless Shelters	
Queens CB 12	703
Queens CB 13	252

What is the housing stock in District 27?

Housing Stock	District 27	Citywide Avg Per District
NYCHA Units	359	3,243
Section 8 Units	582	2,538
Density: PPL Per Acre	32.1	45.8
Percent Homeowners	64.1%	32.7%
Percent Renters	35.9%	67.3%
Rent Regulated Units	5,000	18,980
Units In 1-4 Family Homes	87.6%	38.5%
Units In 5-19 Unit Buildings	1.6%	12.9%
Units In 20+ Unit Buildings	10.6%	48.4%

Housing Production	District 27	Citywide Average
Housing Units In 2021	54,317	70,893
New Housing Units 2022	598	281
Housing Units In 2022	54,915	71,174
Increase In 2022	1.09%	0.39%

NANTASHA WILLIAMS

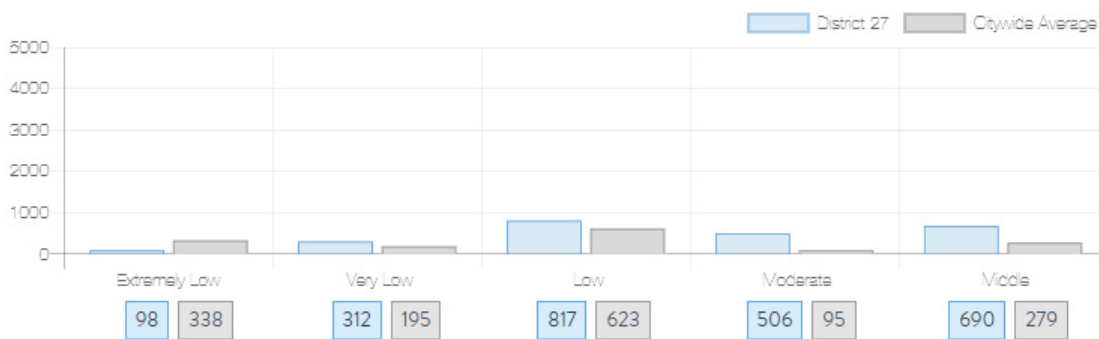
NY City Council
District 27

Cambria Heights, Hollis, Jamaica, St. Albans, Queens Village, and Springfield Gardens

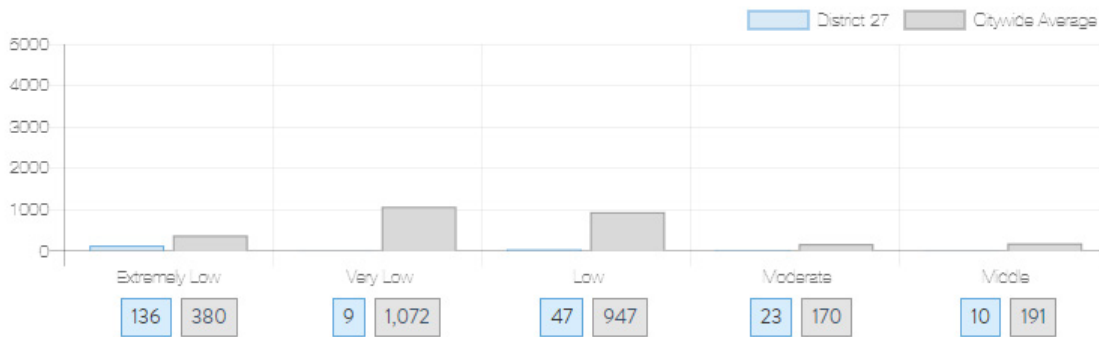


What affordable housing is being produced?

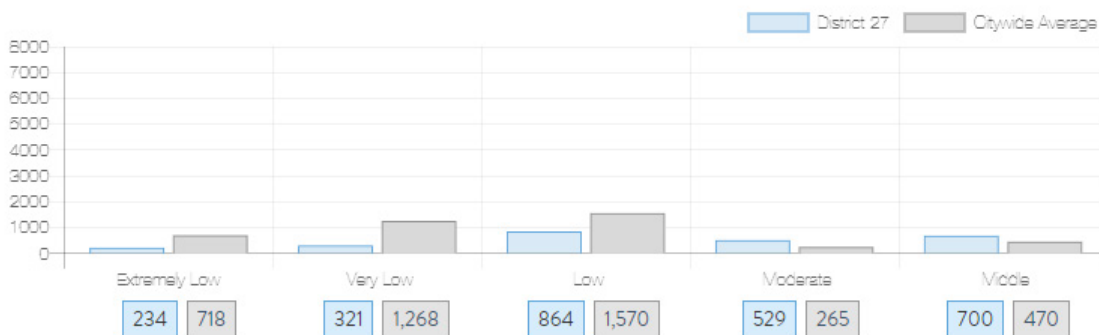
Affordable housing construction in district compared to Citywide average: 2014 - 2022



Affordable housing preserved in district: 2014 - 2022



Total affordable housing production in district: 2014 - 2022



Source: github.com/thenyhcc/citycouncildistricthousingtracker