

FRANCISCO MOYA

NY City Council

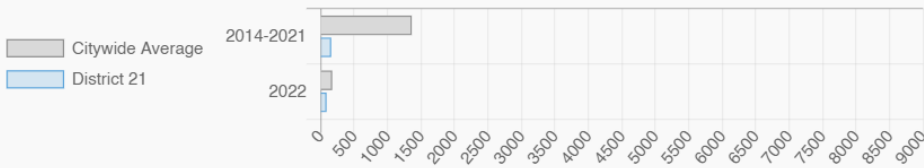
District 21 @FranciscoMoyaNY

East Elmhurst, Elmhurst, Jackson Heights, and Corona in Queens, including Flushing Meadows Corona Park, Lefrak City and LaGuardia Airport

Every Neighborhood Must Do Its Part To Solve New York's Affordable Housing Crisis

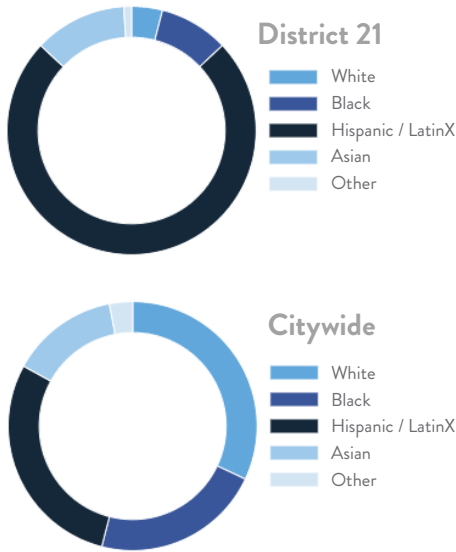
The New York metro area is facing a shortage of 772,000 apartments affordable to very low-income households, nearly 1 million households are rent burdened and more than 68,350 people are homeless in New York City according to the most recent estimate.

Affordable Housing Construction in District: 2014-2022

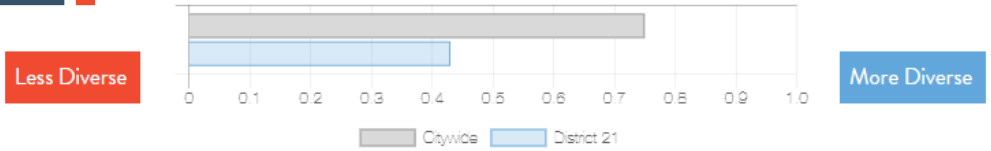


Ranked 39
IN AFFORDABLE HOUSING

Who lives in District 21?



Racial Diversity Index



Demographics	District 21	Citywide
Seniors – 65 And Older	10.1%	14.5%
Families With Children	37.4%	24.8%
Median Household Income	\$58,957	\$63,998
People Living Below Poverty Level	18.6%	17.9%

What are the housing needs in District 21?

Housing Need	District 21	Citywide Avg Per District
Rental Vacancy Rate	1.4%	3.4%
Rent Burdened Households	59.2%	52.5%
Expiring Affordable Units 2023 – 2027	259	1,167
Percent Overcrowded	11.2%	3.7%
Code Violations Per 100 Units	17.1	21.0
NYCHA Capital Needs	0	\$787,949,140

Households Entering DHS Homeless Shelters	
Queens CB 3	196
Queens CB 4	118

What is the housing stock in District 21?

Housing Stock	District 21	Citywide Avg Per District
NYCHA Units	–	3,243
Section 8 Units	822	2,538
Density: PPL Per Acre	65.2	45.8
Percent Homeowners	24.3%	32.7%
Percent Renters	75.7%	67.3%
Rent Regulated Units	17,000	18,980
Units In 1-4 Family Homes	59.9%	38.5%
Units In 5-19 Unit Buildings	11.4%	12.9%
Units In 20+ Unit Buildings	28.5%	48.4%

Housing Production	District 21	Citywide Average
Housing Units In 2021	48,361	70,893
New Housing Units 2022	48	281
Housing Units In 2022	48,409	71,174
Increase In 2022	0.10%	0.39%

FRANCISCO MOYA

NY City Council

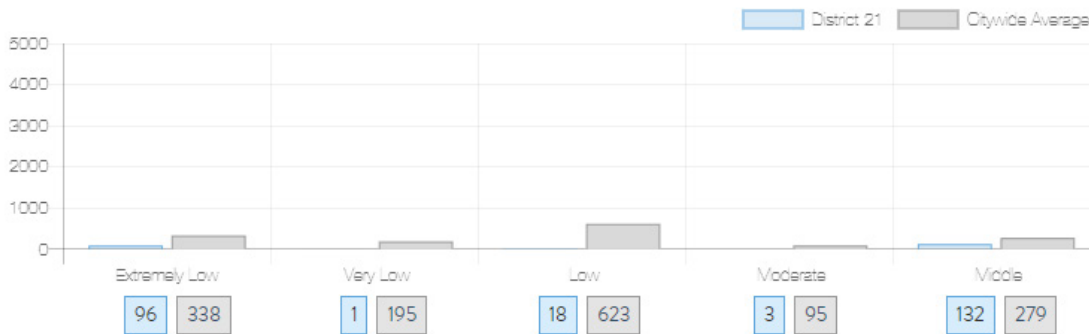
District 21 @FranciscoMoyaNY

East Elmhurst, Elmhurst, Jackson Heights, and Corona in Queens, including Flushing Meadows Corona Park, Lefrak City and LaGuardia Airport

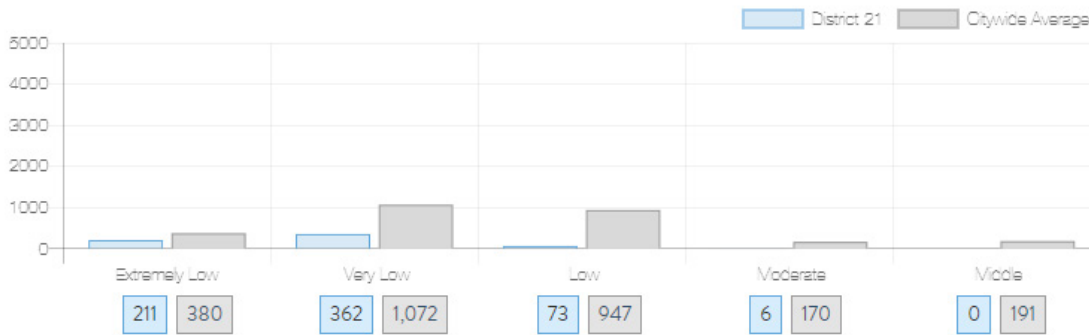


What affordable housing is being produced?

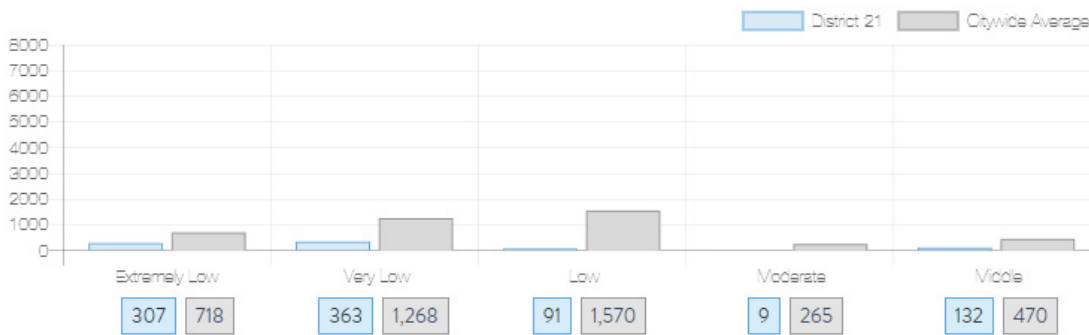
Affordable housing construction in district compared to Citywide average: 2014 - 2022



Affordable housing preserved in district: 2014 - 2022



Total affordable housing production in district: 2014 - 2022



Source: github.com/thenyhccitycouncil/districthousingtracker