

MARJORIE VELAZQUEZ

NY City Council

District 13

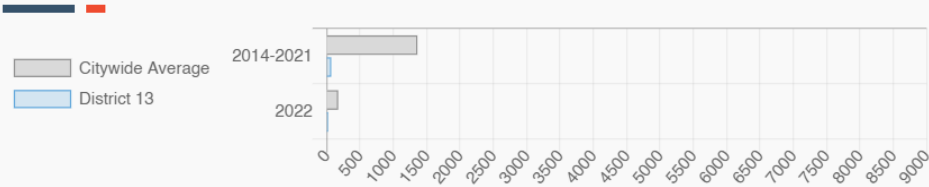
@mvelaznyc

Allerton, City Island, Country Club, Edgewater Park, Ferry Point, Locust Point, Morris Park, Pelham Bay, Pelham Gardens, Pelham Parkway, Schuylerville, Silver Beach, Spencer Estates, Throggs Neck, Van Nest, Waterbury LaSalle, Westchester Square, Zerega

## Every Neighborhood Must Do Its Part To Solve New York's Affordable Housing Crisis

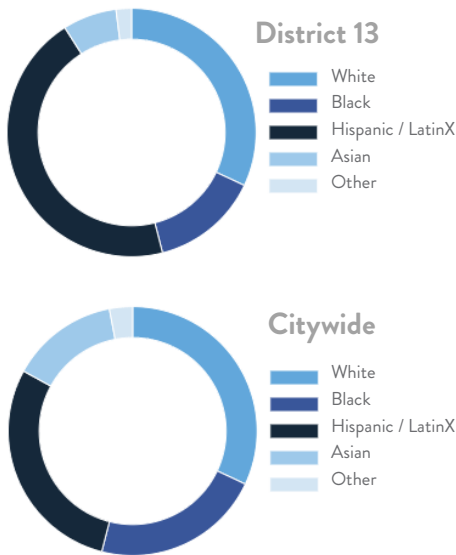
The New York metro area is facing a shortage of 772,000 apartments affordable to very low-income households, nearly 1 million households are rent burdened and more than 68,350 people are homeless in New York City according to the most recent estimate.

### Affordable Housing Construction in District: 2014-2022

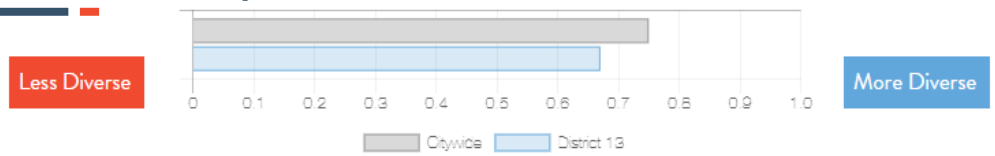


Ranked 47 IN AFFORDABLE HOUSING

### Who lives in District 13?



### Racial Diversity Index



Demographics	District 13	Citywide
Seniors – 65 And Older	17.4%	14.5%
Families With Children	27.1%	24.8%
Median Household Income	\$68,559	\$63,998
People Living Below Poverty Level	14.7%	17.9%

### What are the housing needs in District 13?

Housing Need	District 13	Citywide   Avg Per District
Rental Vacancy Rate	2.5%	3.4%
Rent Burdened Households	52.9%	52.5%
Expiring Affordable Units 2023 – 2027	477	1,167
Percent Overcrowded	3.4%	3.7%
Code Violations Per 100 Units	17.9	21.0
NYCHA Capital Needs	\$1,009,651,603	\$787,949,140

Households Entering DHS Homeless Shelters	
Bronx CB 10	212
Bronx CB 11	399

### What is the housing stock in District 13?

Housing Stock	District 13	Citywide   Avg Per District
NYCHA Units	4,747	3,243
Section 8 Units	2,187	2,538
Density: PPL Per Acre	22.1	45.8
Percent Homeowners	40.3%	32.7%
Percent Renters	59.7%	67.3%
Rent Regulated Units	13,000	18,980
Units In 1-4 Family Homes	62.7%	38.5%
Units In 5-19 Unit Buildings	7.5%	12.9%
Units In 20+ Unit Buildings	29.6%	48.4%

Housing Production	District 13	Citywide Average
Housing Units In 2021	63,983	70,893
New Housing Units 2022	25	281
Housing Units In 2022	64,008	71,174
Increase In 2022	0.04%	0.39%

MARJORIE VELAZQUEZ

NY City Council

District 13

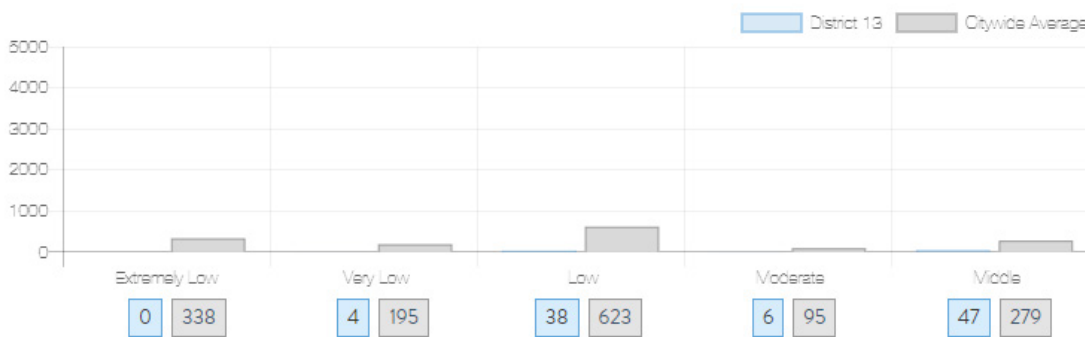
@mvelaznyc

Allerton, City Island, Country Club, Edgewater Park, Ferry Point, Locust Point, Morris Park, Pelham Bay, Pelham Gardens, Pelham Parkway, Schuylerville, Silver Beach, Spencer Estates, Throggs Neck, Van Nest, Waterbury LaSalle, Westchester Square, Zerega

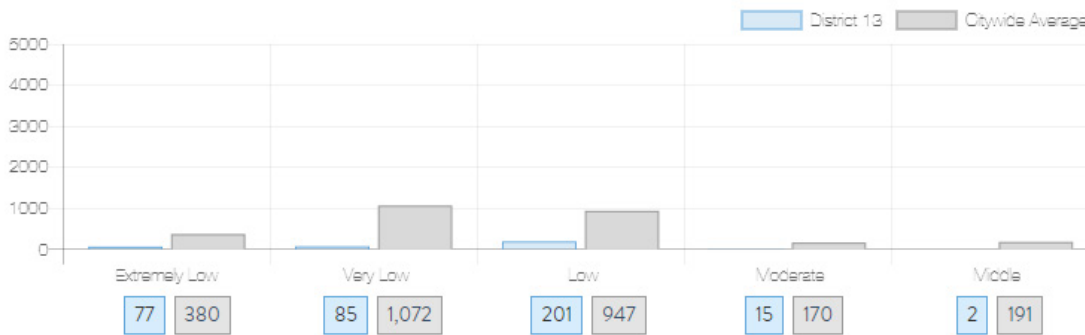
NYC HOUSING TRACKER

## What affordable housing is being produced?

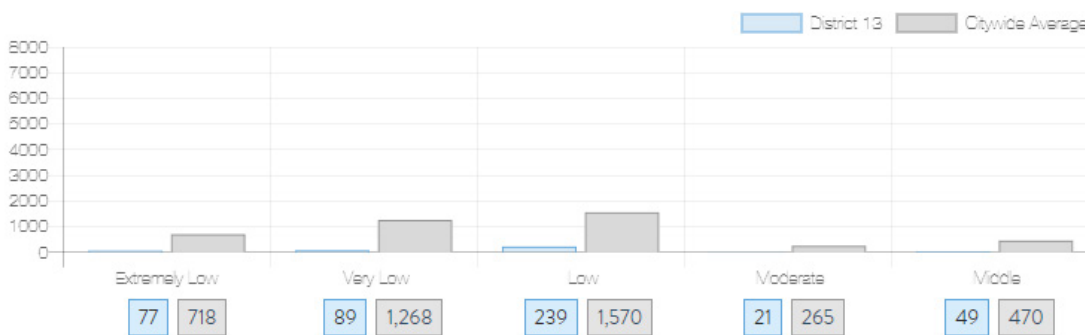
Affordable housing construction in district compared to Citywide average: 2014 - 2022



Affordable housing preserved in district: 2014 - 2022



Total affordable housing production in district: 2014 - 2022



Source: [github.com/thenyhccitycouncil/districthousingtracker](https://github.com/thenyhccitycouncil/districthousingtracker)