

CHRISTOPHER MARTE

NY City Council

District 1

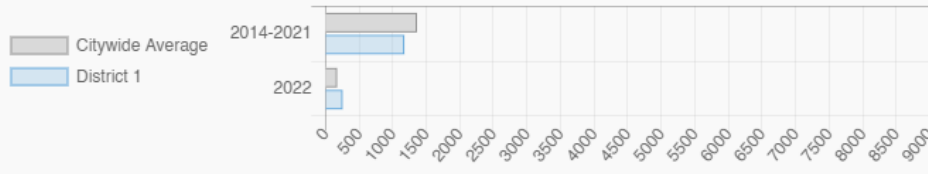
@ChrisMarteNYC

Battery Park City, Civic Center, Chinatown, Financial District, Little Italy, the Lower East Side, NoHo, SoHo, South Street Seaport, South Village, TriBeCa & Washington Square

Every Neighborhood Must Do Its Part To Solve New York's Affordable Housing Crisis

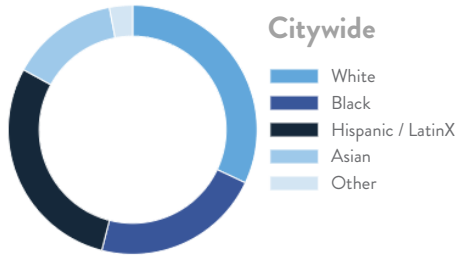
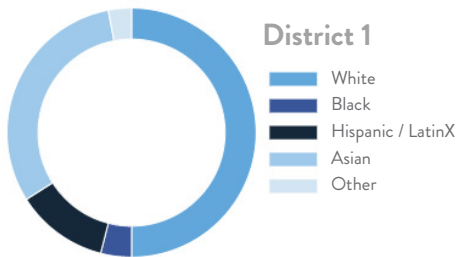
The New York metro area is facing a shortage of 772,000 apartments affordable to very low-income households, nearly 1 million households are rent burdened and more than 68,350 people are homeless in New York City according to the most recent estimate.

Affordable Housing Construction in District: 2014-2022

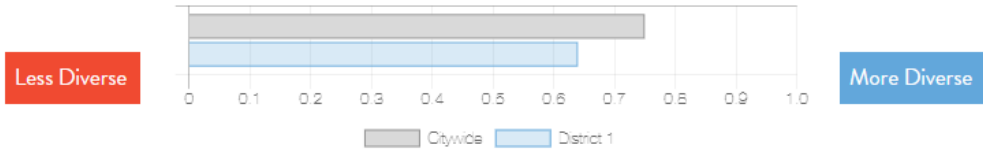


Ranked 22
IN AFFORDABLE HOUSING

Who lives in District 1?



Racial Diversity Index



Demographics	District 1	Citywide
Seniors – 65 And Older	17.1%	14.5%
Families With Children	16.2%	24.8%
Median Household Income	\$107,731	\$63,998
People Living Below Poverty Level	15.1%	17.9%

What are the housing needs in District 1?

Housing Need	District 1	Citywide Avg Per District
Rental Vacancy Rate	3.6%	3.4%
Rent Burdened Households	41.6%	52.5%
Expiring Affordable Units 2023 – 2027	5,854	1,167
Percent Overcrowded	4.6%	3.7%
Code Violations Per 100 Units	8.0	21.0
NYCHA Capital Needs	\$1,143,754,965	\$787,949,140

Households Entering DHS Homeless Shelters	
Manhattan CB 1	426
Manhattan CB 2	29
Manhattan CB 3	310

What is the housing stock in District 1?

Housing Stock	District 1	Citywide Avg Per District
NYCHA Units	4,959	3,243
Section 8 Units	819	2,538
Density: PPL Per Acre	92.6	45.8
Percent Homeowners	22.5%	32.7%
Percent Renters	77.5%	67.3%
Rent Regulated Units	22,000	18,980
Units In 1-4 Family Homes	4.3%	38.5%
Units In 5-19 Unit Buildings	19.0%	12.9%
Units In 20+ Unit Buildings	76.6%	48.4%

Housing Production	District 1	Citywide Average
Housing Units In 2021	95,629	70,893
New Housing Units 2022	49	281
Housing Units In 2022	95,678	71,174
Increase In 2022	0.05%	0.39%

CHRISTOPHER MARTE

NY City Council

District 1

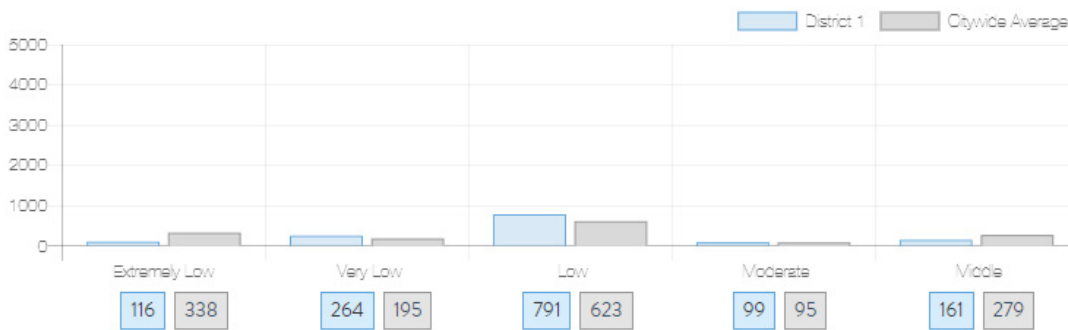
@ChrisMarteNYC

Battery Park City, Civic Center, Chinatown, Financial District, Little Italy, the Lower East Side, NoHo, SoHo, South Street Seaport, South Village, TriBeCa & Washington Square

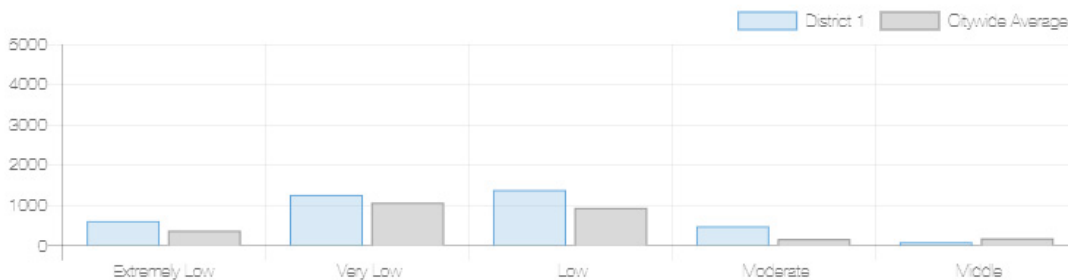


What affordable housing is being produced?

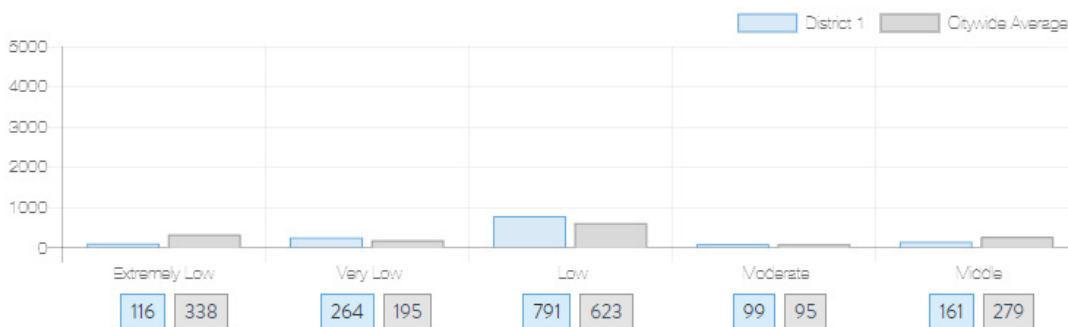
Affordable housing construction in district compared to Citywide average: 2014 - 2022



Affordable housing preserved in district: 2014 - 2022



Affordable housing construction in district compared to Citywide average: 2014 - 2022



Source: github.com/thenyhccitycouncil/districthousingtracker