

CHRISTOPHER MARTE

NY City Council

District 1

@ChrisMarteNYC

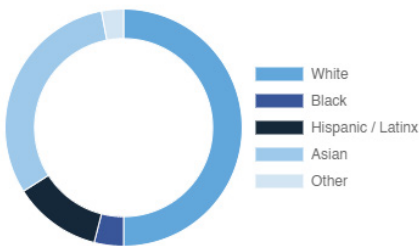
Battery Park City, Civic Center, Chinatown, Financial District, Little Italy, the Lower East Side, NoHo, SoHo, South Street Seaport, South Village, TriBeCa & Washington Square

Every Neighborhood Must Do Its Part To Solve New York's Affordable Housing Crisis

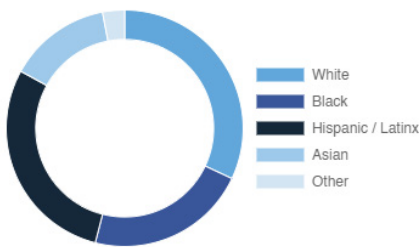
The New York metro area is facing a shortage of 772,000 apartments affordable to very low-income households, nearly 1 million households are rent burdened and more than 68,350 people are homeless in New York City according to the most recent estimate.

Who lives in District 1?

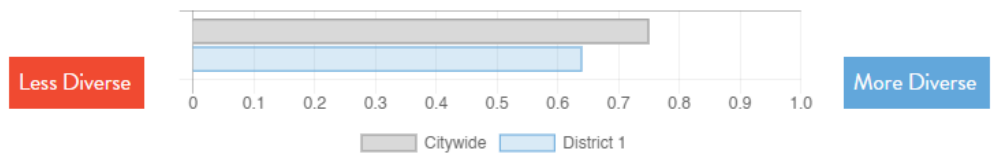
District 1



Citywide



Racial Diversity Index



Demographics	District 1	Citywide
Seniors – 65 And Older	17.1%	14.5%
Families With Children	16.2%	24.8%
Median Household Income	\$107,731	\$63,998
People Living Below Poverty Level	15.1%	17.9%

What are the housing needs in District 1?

Housing Need	District 1	Citywide Avg Per District
Rental Vacancy Rate	3.6%	3.4%
Rent Burdened Households	41.6%	52.5%
Percent Overcrowded	4.6%	3.7%
Code Violations Per 100 Units	4.0	12.1
NYCHA Capital Needs	\$1,143,754,965	\$787,949,140

Households Entering DHS Homeless Shelters	
Manhattan CB 1	585
Manhattan CB 2	23
Manhattan CB 3	495

What is the housing stock in District 1?

Housing Stock	District 1	Citywide Avg Per District
NYCHA Units	4,959	3,243
Section 8 Units	819	2,538
Density: PPL Per Acre	92.6	45.8
Percent Homeowners	22.5%	32.7%
Percent Renters	77.5%	67.3%
Rent Regulated Units	22,000	18,980
Units In 1-4 Family Homes	4.3%	38.5%
Units In 5-19 Unit Buildings	19.0%	12.9%
Units In 20+ Unit Buildings	76.6%	48.4%

Housing Production	District 1	Citywide Average
Housing Units In 2013	87,302	67,275
New Housing Units 2014 – 2020	7,377	3,051
Housing Units In 2020	94,679	70,326
Increase From 2013	8.40%	4.5%

CHRISTOPHER MARTE

NY City Council

District 1

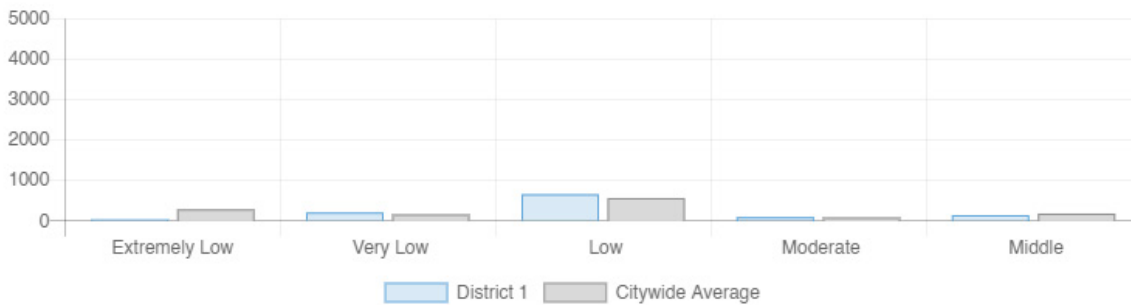
@ChrisMarteNYC

Battery Park City, Civic Center, Chinatown, Financial District, Little Italy, the Lower East Side, NoHo, SoHo, South Street Seaport, South Village, TriBeCa & Washington Square

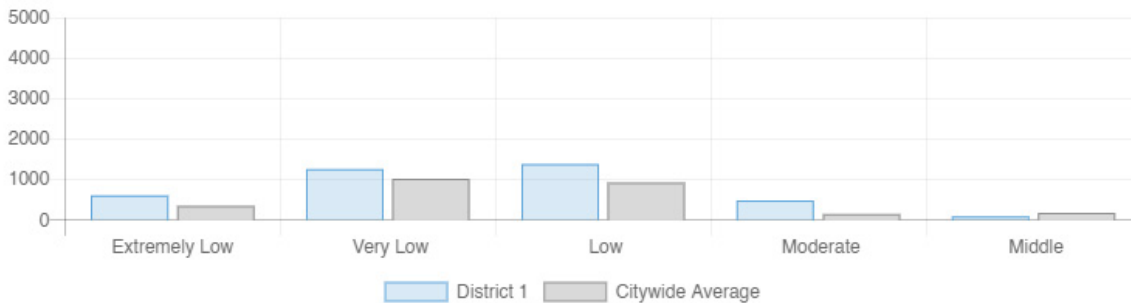


What affordable housing is being produced?

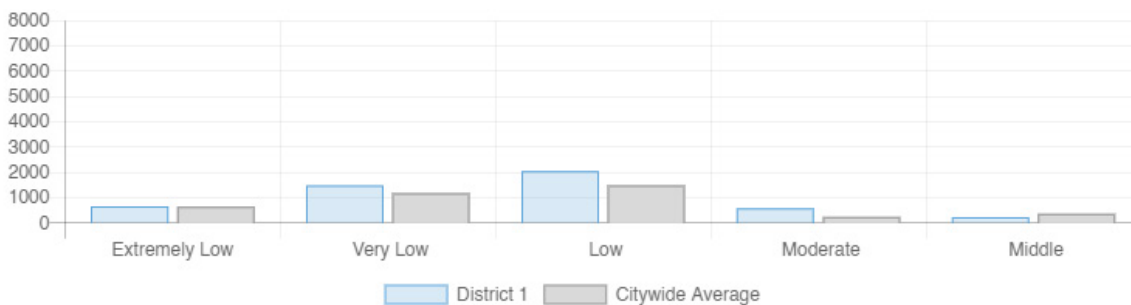
Affordable housing construction in district compared to Citywide average: 2014 - 2021



Affordable housing preserved in district: 2014 - 2021



Total affordable housing production in district: 2014 - 2021



Source: github.com/thenyhccitycouncil/districthousingtracker